

Conductus Funebriſ

Canto Alto ^{A. II.} Tenore Baſſo

2 Violin.

2 Clarin.

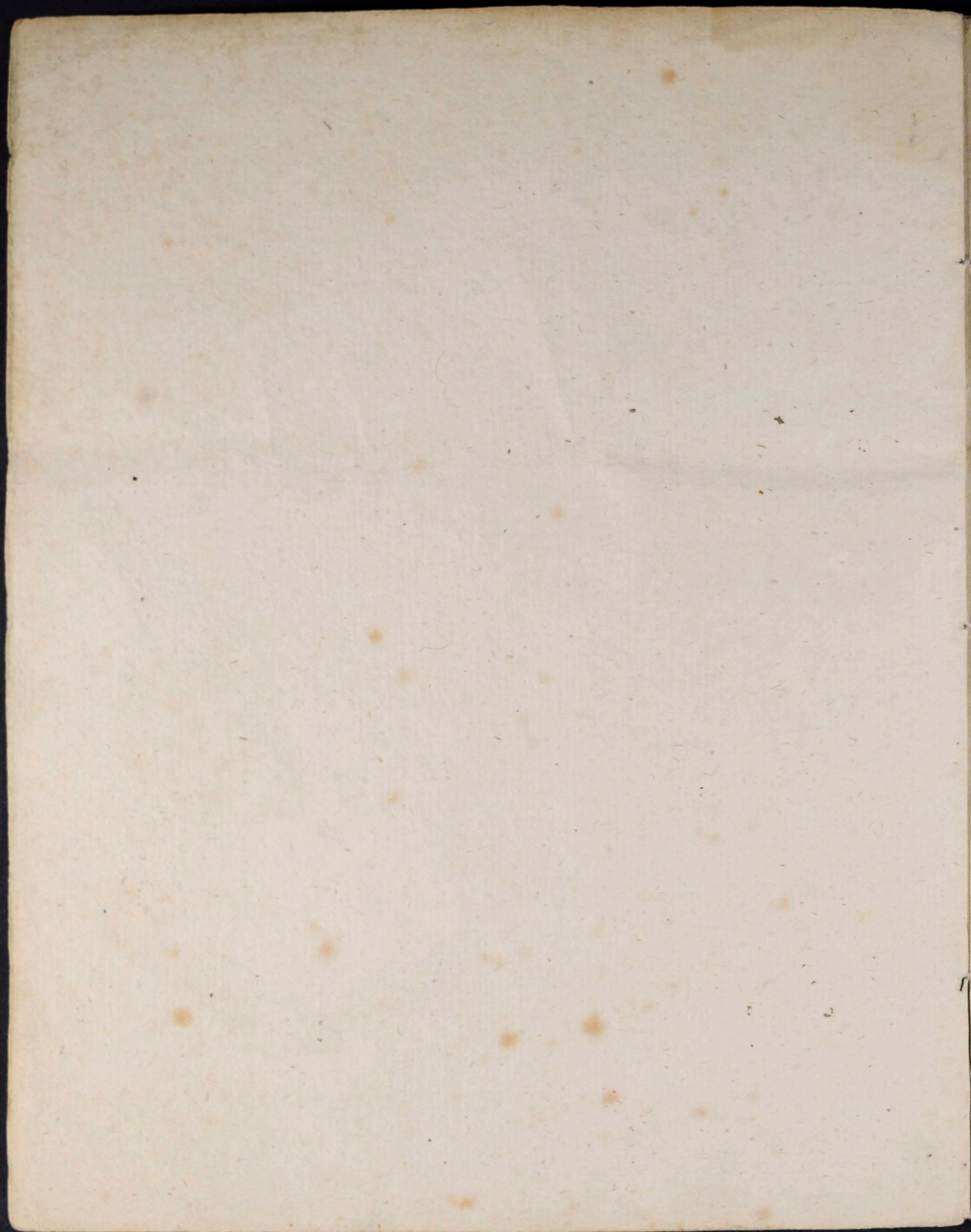
Viola Alto

Violone vel Baſſo Trombone

e Organo.

A. G. G. Gorkycki.

Eccleſiæ Publicæ Ratoruſ Sacrum
Raptoruſ Sacri legium.



Organo

Lento

6 6 b 4# 6 6 4# 2

onata,

6 4# 6 4#

Subvenite

6 4# # 6 4#

6 # 6 4# # b 6 4# 6 4#

Suscipiente

6 4#

Offerentes

6 4#

6 26 6 4# 4# 6 4#

6 26 6 6 6 6 6 6

6 4# 6 26 4# 6 4# 6

6 26 6 26

ante



Ipsi niente.
Requiem.

Offertoria.

onata.
Libera me Domine.

Handwritten musical score consisting of ten staves. The notation includes various rhythmic values, accidentals, and dynamic markings. The first staff begins with a treble clef, a key signature of one sharp (F#), and a time signature of 2/4. The music is written in a cursive, historical style. Numerous annotations are present throughout the score, including numbers (e.g., 6, 43, 26, 4, 2), sharp symbols (#), and other symbols (e.g., 4#). The text "Dum venieris" is written across the sixth and seventh staves, and "Tremens" is written across the eighth and ninth staves. The score concludes with a double bar line on the tenth staff.

A small handwritten musical fragment located at the bottom right of the page. It consists of a single staff with a treble clef, a key signature of one sharp (F#), and a time signature of 2/4. The notation includes a few notes and rests, ending with a double bar line.

Handwritten musical notation on a single staff, featuring a treble clef and a 3/4 time signature. The music consists of a series of quarter and eighth notes. A large number '6' is written above the first measure. The section is labeled 'Quarto.' below the staff. The piece concludes with a double bar line and the text 'Die illa' written above the final notes.

Handwritten musical notation on a single staff, featuring a treble clef and a 3/4 time signature. The music consists of a series of quarter and eighth notes. A large number '6' is written above the first measure.

Handwritten musical notation on a single staff, featuring a treble clef and a 3/4 time signature. The music consists of a series of quarter and eighth notes. A large number '6' is written above the first measure. The section is labeled 'Dum ueniens' below the staff.

Handwritten musical notation on a single staff, featuring a treble clef and a 3/4 time signature. The music consists of a series of quarter and eighth notes. A large number '6' is written above the first measure. The section is labeled 'Dum ueniens' below the staff.

Handwritten musical notation on a single staff, featuring a treble clef and a 3/4 time signature. The music consists of a series of quarter and eighth notes. A large number '6' is written above the first measure. The section is labeled 'Dum ueniens' below the staff.

Handwritten musical notation on a single staff, featuring a treble clef and a 3/4 time signature. The music consists of a series of quarter and eighth notes. A large number '6' is written above the first measure. The section is labeled 'Requiem.' below the staff.

Handwritten musical notation on a single staff, featuring a treble clef and a 3/4 time signature. The music consists of a series of quarter and eighth notes. A large number '6' is written above the first measure. The section is labeled 'Requiem.' below the staff.

Handwritten musical notation on a single staff, featuring a treble clef and a 3/4 time signature. The music consists of a series of quarter and eighth notes. A large number '6' is written above the first measure. The section is labeled 'Liberame.' below the staff.

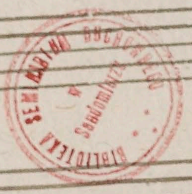
Handwritten musical notation on a single staff, featuring a treble clef and a 3/4 time signature. The music consists of a series of quarter and eighth notes. A large number '6' is written above the first measure. The section is labeled 'Liberame.' below the staff.

Handwritten musical score with six staves. The notation includes various rhythmic values, accidentals, and dynamic markings. The lyrics "Quasi Caeli" and "Dum accendis" are written below the second and fourth staves respectively. The word "Veste" appears at the end of the sixth staff.

Quasi Caeli

Dum accendis

Veste



Handwritten musical notation on a single staff, featuring a treble clef, a 3/4 time signature, and various rhythmic values. The text *n. parvus sum.* is written below the staff. Measure numbers 6, 43, 6, 5, and 43 are indicated above the staff.

Handwritten musical notation on a single staff, featuring a treble clef and various rhythmic values. Measure numbers 6, 26, 6, 5, and 4# are indicated above the staff.

Handwritten musical notation on a single staff, featuring a treble clef and various rhythmic values. Measure numbers 6 and 43 are indicated above the staff.

Handwritten musical notation on a single staff, featuring a treble clef and various rhythmic values. Measure numbers 43 and 4 are indicated above the staff.

Handwritten musical notation on a single staff, featuring a treble clef and various rhythmic values. The text *Chorus Angelorum* is written below the staff. Measure numbers 6, 4, 3, and 2 are indicated above the staff.

Handwritten musical notation on a single staff, featuring a treble clef and various rhythmic values. Measure numbers 28, 43, 3, and 4 are indicated above the staff.

Handwritten musical notation on a single staff, featuring a treble clef and various rhythmic values. The text *cum Lamento* is written below the staff. Measure numbers 6, 43, 6, 43, 6, 43, 6, 43, and 43 are indicated above the staff.

Handwritten musical notation on a single staff, featuring a treble clef and various rhythmic values. The text *Requiem.* is written below the staff.

Four empty musical staves at the bottom of the page.

Ave Regina

Bar.

Ad te clamamus

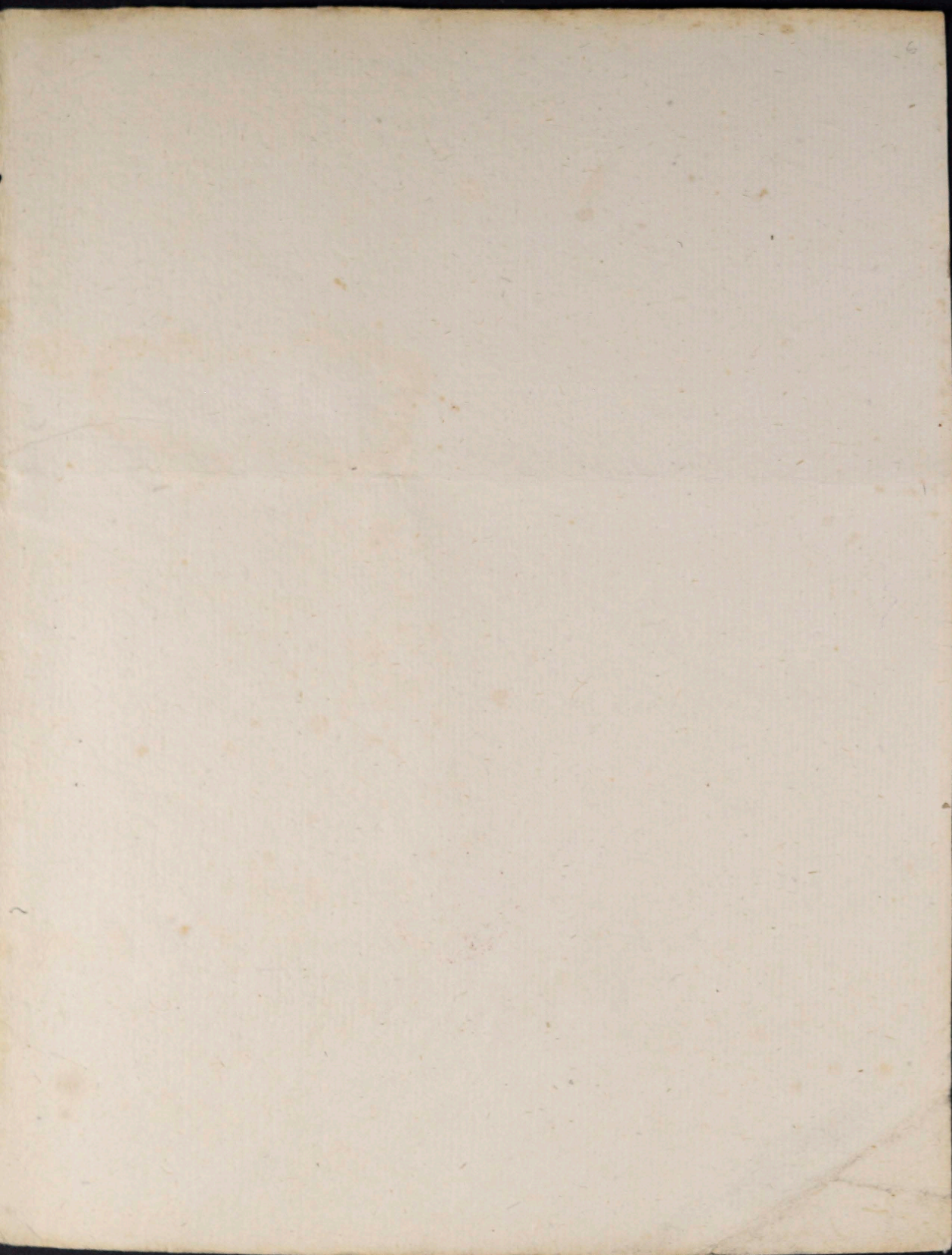
bis

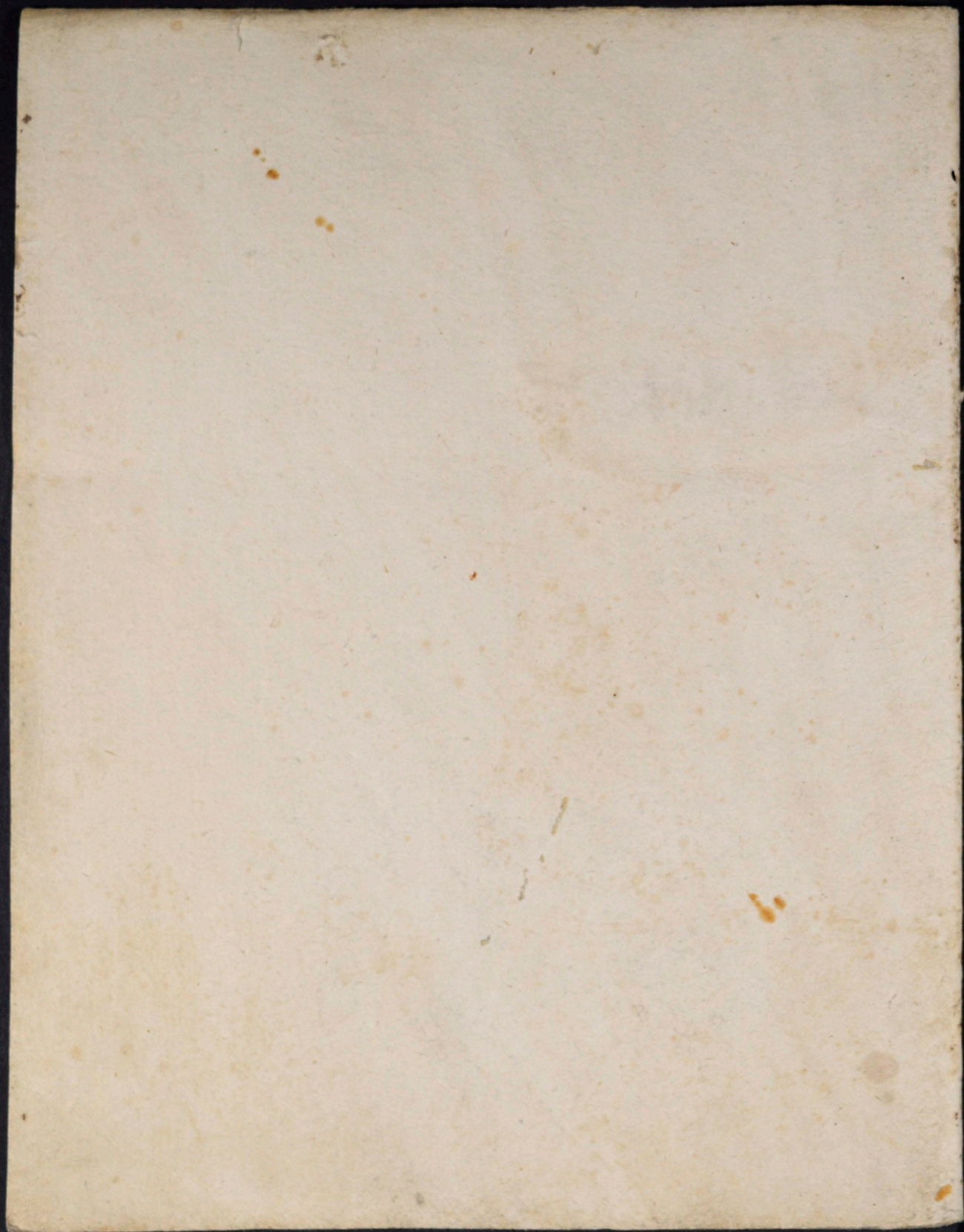
26

Averte.

Handwritten musical score on six staves. The notation includes various rhythmic values, accidentals, and dynamic markings such as *4^o*, *6*, and *4^o*. The score concludes with a double bar line and a fermata.







Sonata.

Canto.

Subvenite Subvenite Sancti Dei. Be
 car - rite Angeli Domini Suscipientes animam e
 jus Suscipientes animam eius animam = ejus Offe
 ren - tes e - am in conspe ctu Al - - - tissi mi
 Offeren - tes eam in conspectu Alt issi mi Sus
 cipiat te Chri sty qui ro ca rit te ro carit te et in
 sinum A - - gratie Angeli dedu - - cont te.
 Suscipientes animas suas Suscipientes animas eius animas a
 nimas eius Requiem eterna dona ei Domine et lux

perpetua luceat luceat ei et lux perpetua luceat luceat

ei luceat luceat ei. Offe - - rentes e - am

in conspe ctu Al - - tissimi Offeren - - tes eam

in conspectu Altissimi.

Libera - me Do - mine de - morte

a ter ra in die illa tre - - men - -

da Quando Calendo Calo quando quando Calo mo rudi mo - -

rudi mo rudi sunt et tunc mo rudi mo rudi mo rudi sunt et

tunc quando Calo mo ren - - di sunt ex terra. "Dixit"

ris dū venis judi care re judi care seculū per i
 gnem judi care seculū per i - gnem judi care judi
 care seculū per i - gnem. Tremens factus ego et
 ti - - meo dū discipulo venit alij ventu - ra i ra
 quando = cali mo - rudi sunt et terra. Dies illa
 dies ira calamitatis Calamitatis et mi serid dies ma -
 gna dies magna dies ma - gna era mara a mara -
 calde et a mara a ma ra calde et a mara amara calde
 Dū venis dū venis judi care judi care se - culum.

per ignem. Requiem aeternam dona ei Domine

et lux perpetua luceat ei. et lux perpetua

luceat ei. luceat ei. Libera me da Capo
urg ad Tremens.

in Paradysum de du cantate dicunt de du ante te Angeli

in tuum ad ventum suscipiant te Martyres

et perducant perducant te in Civitatem Sanctam Iherusalem.

Chorus Chorus Angelorum te suscipiat suscipiat te suscipiat

at. Chorus Angelorum te suscipiat suscipiat.

Et cum Larum quondam paupere aeterna aeterna habeas re

queni aeterna tuam habes Regni Regni

em.

al re Regi na Mater mi sereri cor

did

ai ta diludo et spes nostra sal ve Ad te clamamy cla

mamg. exules exules Fili

eva exules exules Fili eva. Ad te suspi ra

my suspi ramy ge mentu gementu gementu et flentes suspi ramy

ad te suspi ramy ge men ter gemen

tes in hac lae ma nu val - le in hac lae

ma nu lae ma nu val - le. Ga ga ergo Adio

cata Nostra illos Quos mi Sen cordes Oculos Ad nos

conver - te conver - te Converte converte. 4.

Et Jesum benedictus fructus Ventris Tui Noli peji hoc ex ilium

ostende Noli peji hoc ex ilium ostende

Clemens o pi a o Dulis Ergo Ma ri a o dulis Ergo Ma

ri a o Clemens o pi a o Dulis Ergo Ma ri a Ma ri a

Sonata.

Alto.

Subvenite Subvenite Sancti Sati Deo
 Occurrite Angeli Domini Suscipi-
 entes animam eius Suscipientes anima eius anima e
 jus Offeren tes e - - - am in conspectu
 Altissimi Offeren - tes e - - - am
 in conspe ctu Al - tissimi Suscipi at te Christus qui
 exca vit te exca - - - vit te et in unum A -
 brahe An - geli dedu cant dedu cant te Suscipientes a
 nima eius Suscipi entis anima eius anima - - - eius.

Requi em a ter nam dona ei Domine et lux perpetua

luceat luceat ei et lux perpetua luceat luceat ei

i luceat luceat ei. Offeren tes e - -

- - domini conspectu Al hsi imi offeren tes e -

- - am in conspe - ctu Alti ssi mi.

Canata
Liberata me Domine de ma - - te de

mor te a ter. na in die illa tre - men da tremenda

be men - - da tremenda Quando q̄do Celi quando = Celi

mo - - - - - rudi sunt et terra mo - - - - -

condidit et terra quando = Celi mo condidit et terra.

Dul veneni dul acenis iudi care iud care = Saculum

per i - gnem iud care Saculum per i - gnem iud care

= Saculum per i gnem per i - gnem. Tremens factus est

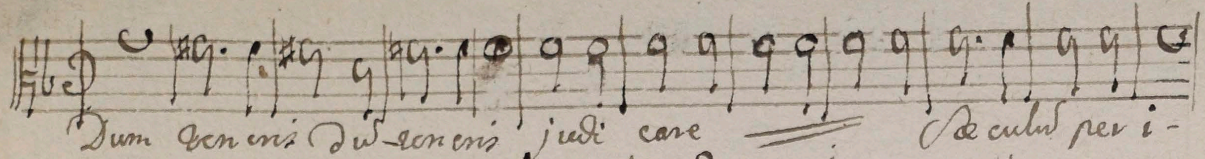
et timeo dul discussio venient atque ion tu ra i -

ra Quando Celi mo - - condidit et terra Dies

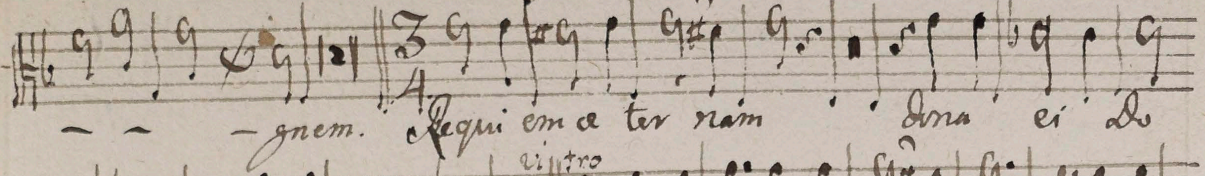
illa dies i - ra. calamitatis et miserie

dies magna dies magna et amara amara

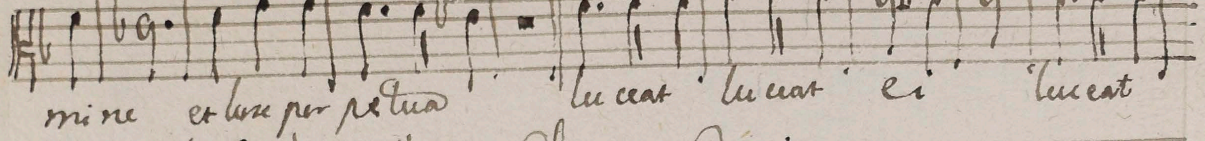
et amara valde et amara amara valde.



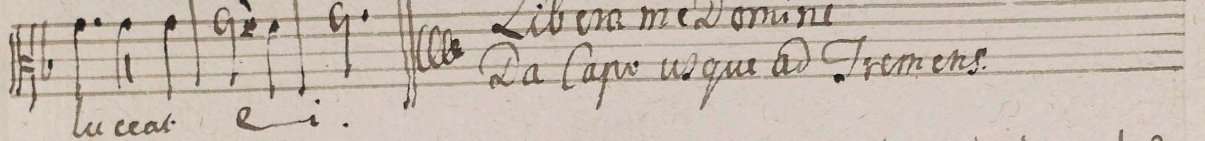
Dum veniens dum veniens judicare



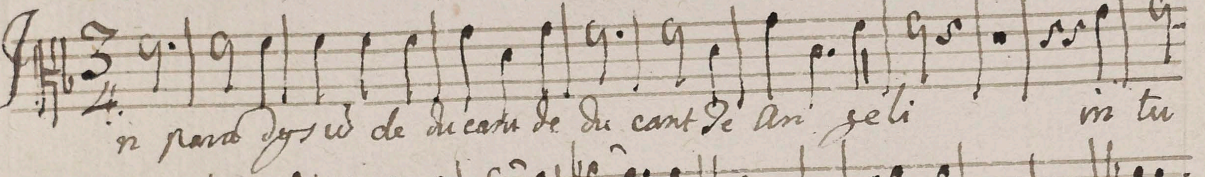
Regnum. Regni em a ter nam dona ei do



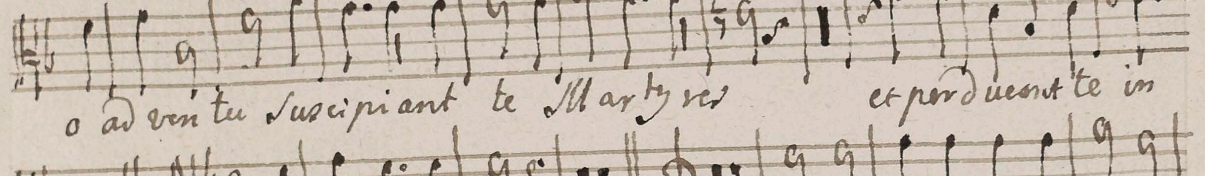
mine et lux perpetua luceat luceat ei luceat



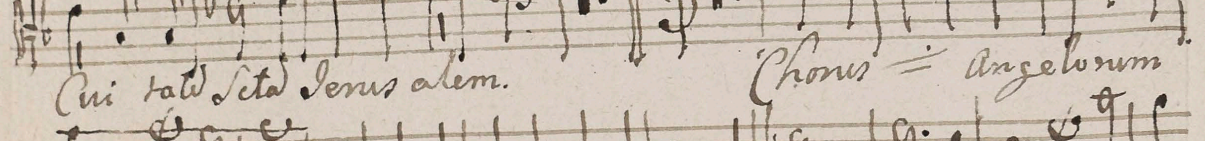
Libera me Domine Da Caput usque ad Tremens



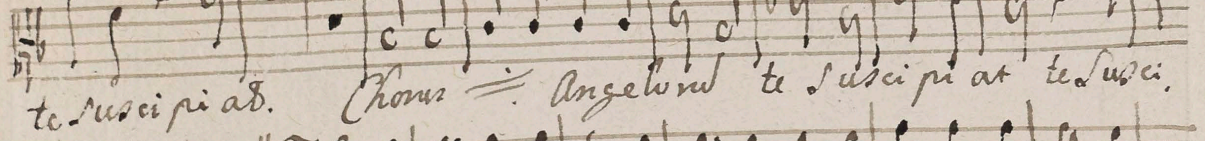
in para dyso de dicatu de du cant de An geli in tu



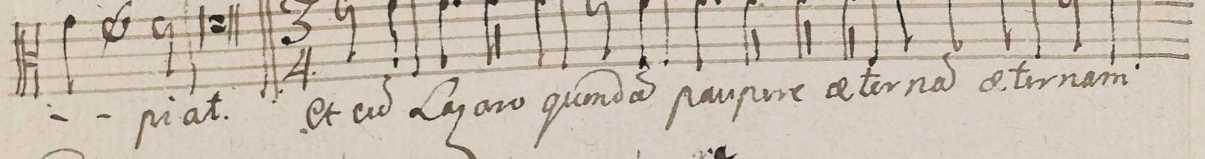
o ad ven tu suscipiant te Marty res et perduent te in



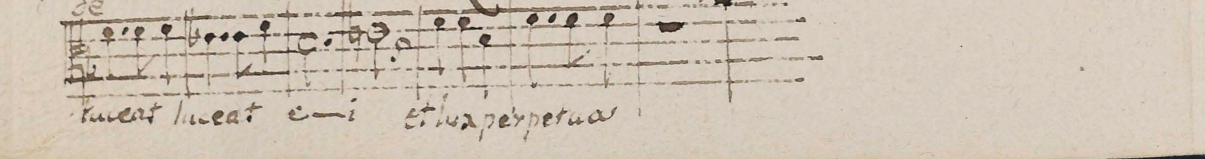
Cui talis sita Jenu alem. Chorus = Angelorum



te suscipi ad. Chorus = Angelum te suscipiat te susci



piat. Et cu Lazaro quonda paupere aterna a ternam



luceat luceat ei et lux perpetua

habeas Requiem aeterna aeterna habeas Requiem

Requiem.

al ce Re gi na Salve Re gi - - na

Mater mi ser i cor - - - did. Vi ta et spes

nostra Salve Ad te clamamꝰ clamamꝰ Ad te clamamꝰ

exules —. Ihs Eue. exules —. Ihs E

va Ad te Suspi ramus suspi ra - - mus gementes suspi

ramus suspi ramꝰ gementes et flet - - - tes et flet -

— - - tes in hac la chry mand in hac lachry ma - - - ram.

Val. le in hac lachry manu Val le in facymant Valle.

Ga ga ego Advocato Nostra illo tuo mi se

si cades Oculos ad Nos converte te Ad No con verte ad

No converte 4. Et Jesum benedictum fructus Ventris fructus Ventris tu

i Nolis pro hoc exilium ostende Nolis pro hoc exilium

ostende o Clemens o pia o Dulcis Virgo, dulcis Virgo vir

o Maria Virgo Maria o Clemens o Clemens o pia

o Dulcis Virgo Maria

Sonata.

Tenore.

Subveni te Subveni te Sancti Dei
 Succurri te Angeli Angeli Domini Suscipientes a
 nimiam eius Suscipientes animam eius a nimiam eius.
 Offerentes eam in conspe - - -
 ctu in conspectu Altissimi Offeren - tes e - - am in
 conspectu in conspe - ctu Altissimi Suscipiat te Christus
 etis qui excaerit te qui excaerit te qui excaerit te et nisi
 nus Abaha in sinu Aba - - ha An - - geli Deducant
 Te Suscipientes animam eius Suscipientes animam eius

animam eius a - nimam eius. Requiem aeternam

nam dona ei Domine et lux perpetua luceat

ei. et lux perpetua luceat luceat ei luceat

luceat ei. Offeren - tes e - am in

con spe - - ctu in conspectu Altissimi Offeren - tes

e - am in conspe - ctu in conspe - ctu Altissimi.

Adagata
ibera me Domine de morte aeternae

nae de morte aeternae - - na in die in die il

lae - - men dae - - men

bis

- da. Quando quando Celi quid = Celi mo -
 - rudi sunt et terra mo - rudi sunt et ter
 ra qdo qdo Celi mo rudi sunt mo rudi sunt et terra. Dum
 veniens dñs veniens judi care judi care = se -
 - culum per ignem judi care = Saeculum per i - gnem
 judi care Saeculum per i - gnem Tremens fa
 ctus est ego et ti - meo dum discessio ve - nient atque
 ven tu ra ven tu ra ira Quando Celi mo -
 rudi sunt mo rudi sunt et terra Dies illa dñs ira

calami tatis et misericordie dies magna

dies dei magna et a mara a mara calde et a mara amara cal

de era mara a ma' ra cal de Dum venis du' venis jud

care seculum per ignem per ignem.

Requiem eternam dona ei Domine et lux perpetua

luceat ei et lux perpetua luceat luceat e

i luceat ei. Libera me da capo usque ad Tremens.

in paradysum de ducant de ducant de ducant te Angeli in tu

o ad ventu suscipiant te Martyres et per ducant per ducant te in cieli

Chorus = Angelorum
talem Pontem = Jerusalem.

tesus ci pi at sus ci - - pi at Ie sus ei pi at sus ci pi at. et cum

Laram quonda paupere aterna eterna habear requiem e

terna eterna habear requiem requiem.

al. re deli - na salve Mater mi seri cor -

- dia si - ta dulci - - do et spes nostra et spes no

stra salve Ad te cla mamus clamamus

lis exules filij Eve exules = filij Eve. Ad

suspi ramus sus pi ramus sus pi ramus sus pi ramus se mentis et

ten - - - tes et flun - - - tes mi haer la cry
ma n d cal - - - le la cry mand lachry ma n d Valle Ga ya
cye Ad vocata No - tra illes tus mi - seri cordes Oculis ad
Nos Con ver - te ad Nos con verte Et de sum
Benedi ctus fructus ventris ventris tui nobis post hoc exi li um e
stende nobis post hoc exi li um ostende O clemens
o pi - a o dulcis Virgo Ma ria Virgo Ma ria o clemens o
ria o pi a o dulcis Virgo Ma ria o dulcis Virgo Ma ria Ma
ria

Sonata.

Basso.

Subvenite Subvenite Sancti Spiritus Dei Oc-
 currite occurrete Angeli Domini Suscipi entes
 animam eius Suscipi entes animam eius
 Offerentes eam in conspectu Altissimi
 mi Offerentes eam in conspectu Altissimi
 Suscipiat te Christus qui vocavit et vocavit te et in
 unum Abrahama Angeli deducant te Suscipi entes
 animam eius Suscipi entes animam eius
 Regni eme eterna dona ei Domine et lux perpetua

lucet lucet ei. Et lux perpetua luceat luceat e

i luceat ei Offeren - tes eam in con

spectu Altis - si mi Offeren - tes eam in conspe

ctu Al. - ti - si mi.

Capata
C II
iberame do - mi ne de morte aeterna de mor

te aet - na in die il -

latre - menda tremenda tremen - da Quis quan

do Cali quid quid Cali mo - vendi sunt et ter

ra mo - vendi sunt et terra quid Cali mo -

rendi sunt et terra. Dum veni dicitur aenei judi care

jud: care ——— Sa — culus per ignem judi care ju

dicare Sa — culus per i — gnem. Tremens factus est e

go et ti — mes dicitur discipulis veniens atque intu —

— ra i — — ra. ^{Di} ^{tro} Dicit illa dicitur in calami

tatis calami tatis et mi seria dicitur ma — gna dicitur ma —

gna dicitur magna et amara amara Calde et amara amara

calde. Verte

de ³/₄ ⁴/₄ ^{re}
Dicitur quod Calde — — rendi sunt et terra.

Dum veniens de aere in judicase
 super ignem Requiem eternam dona ei Domine
 et lux perpetua luceat ei: et lux perpetua
 a luceat luceat ei luceat luceat ei: *Libera*
daqu
ad dromy
 in paradysum deducam delectam tuum angeli
 in tuo adventu suscipiant te Martyres et pendu
 corum penducam te in Civitatem Sanctam Jerusalem
 Chorus Chorum Angelorum te suscipiat suscipiat
 suscipiat et benedictionem quam perpetua eternam
 habeas Requiem eternam eternam habeas requi

em Requiem.

alve legi - - na Mater mi ser cor -

di et si ta vita dulcedo et

Pro nostra Salve Ad te clamamus clamamus Ad te clamamus cla

mam exules exules filij Era exules filij

Era Ad te suspiramus. Suspiramus suspiramus gemen

tes et flen - - tes. in hac lachryma

rum lachryma - - rum valle lachrymarum valle. Ga

ga ergo Adiuca Nostra illos tuos mi ser cor

des oculis Ad nos ad nos converte converte.

4. *Prole sum bene dictum fructus ventris tui. Noli putare hoc e-*
xilium ostende noli putare hoc exilium ostende.
O clemens pi a o dulcis Vir go Ma ri a
o Dulcis Vir go Ma ri a o Dulcis Vir go Ma ri a Ma
ri a.

Violino I. mo.

Conata

Subrite

Insipientes

Insipientes

Insipientes

Handwritten musical notation on a five-line staff, 3/4 time signature.

Handwritten musical notation on a five-line staff, 3/4 time signature. *Requiem.*

Handwritten musical notation on a five-line staff, 3/4 time signature.

Handwritten musical notation on a five-line staff, 3/4 time signature.

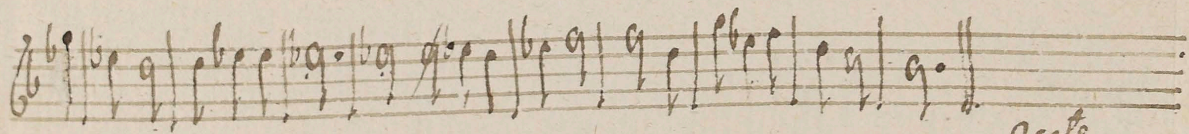
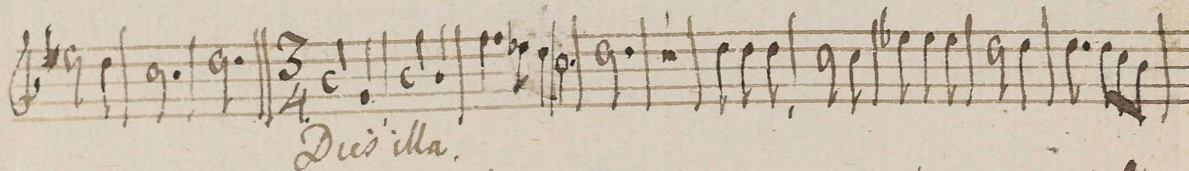
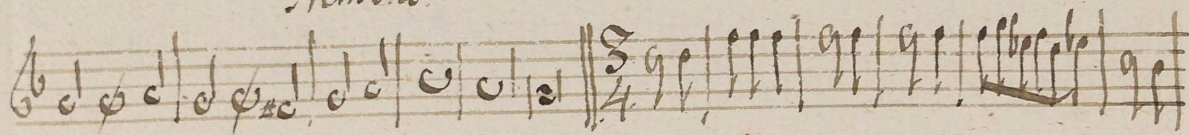
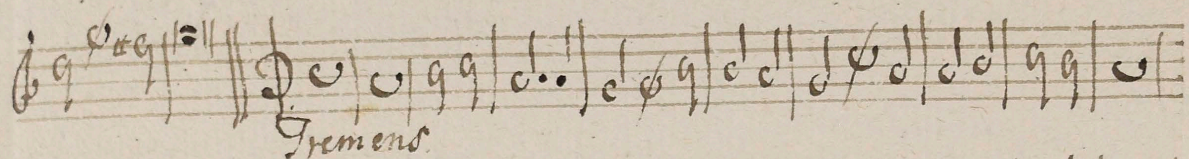
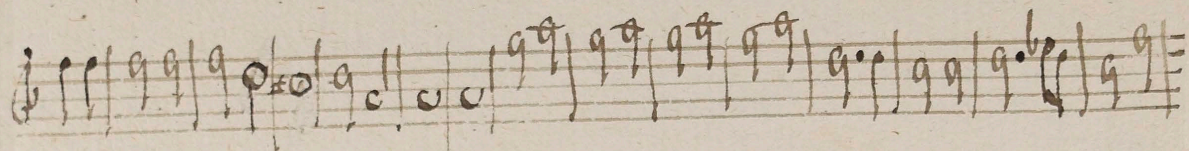
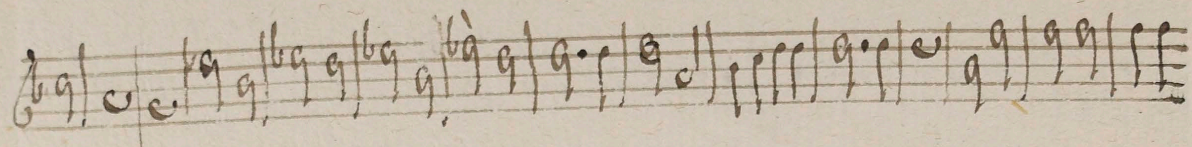
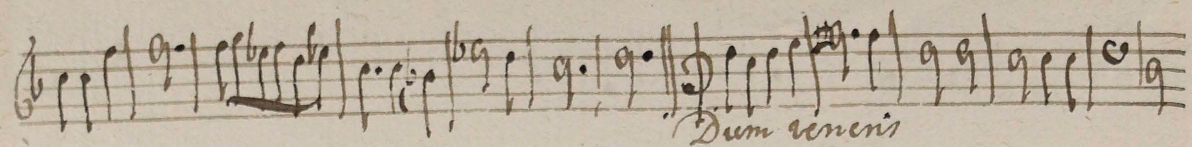
Handwritten musical notation on a five-line staff, 3/4 time signature.

Handwritten musical notation on a five-line staff, 3/4 time signature. *onato.*

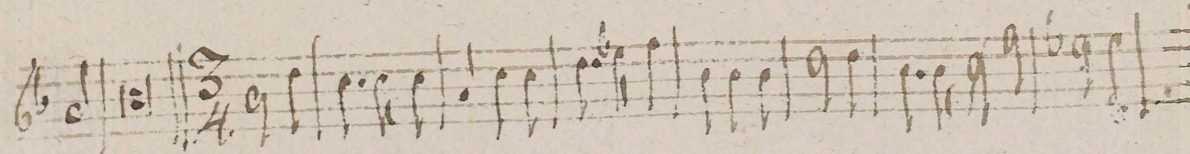
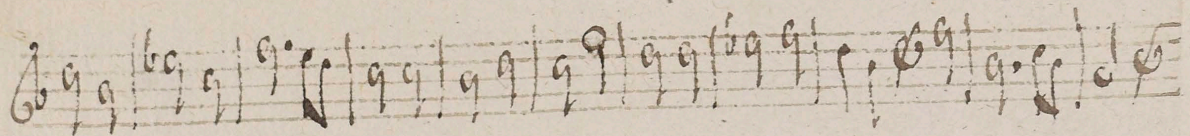
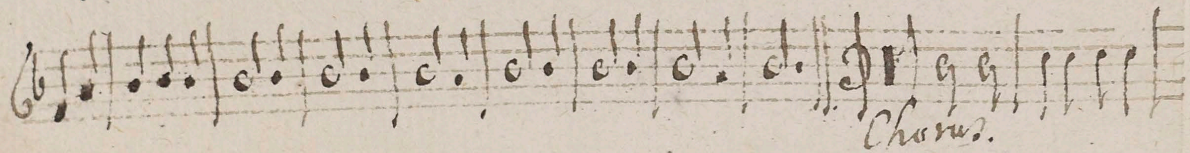
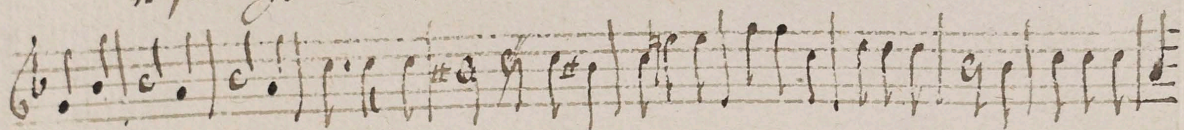
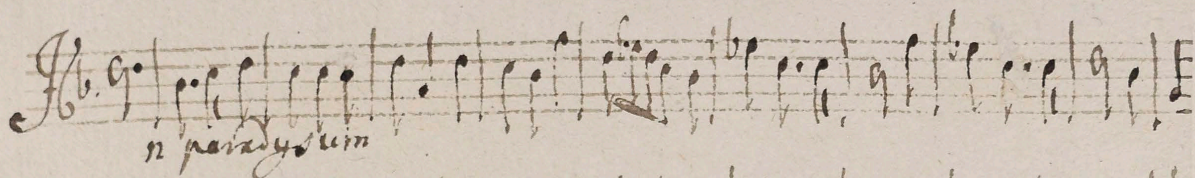
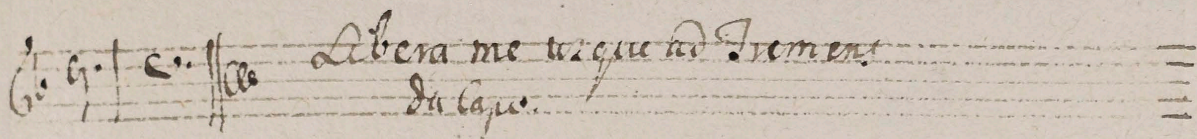
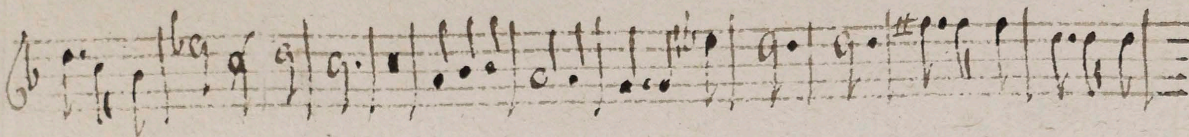
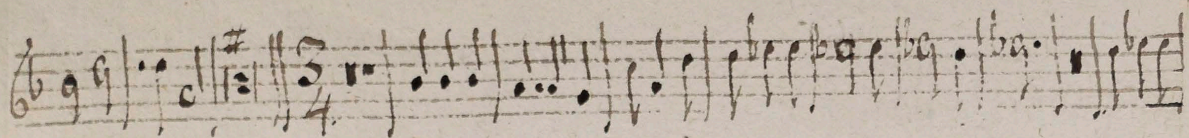
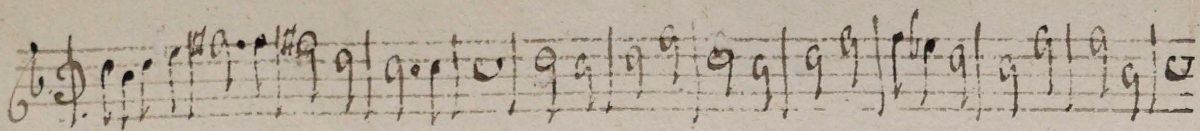
Handwritten musical notation on a five-line staff, 3/4 time signature. *Liberame Domine.*

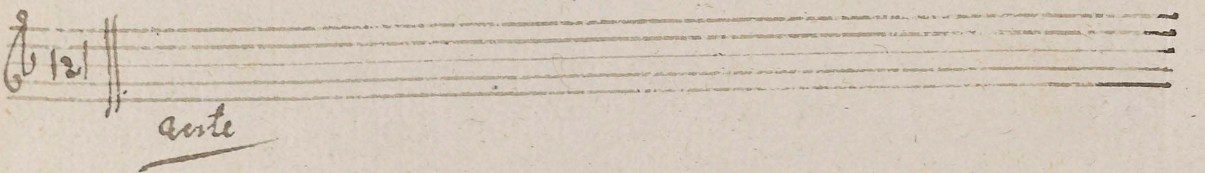
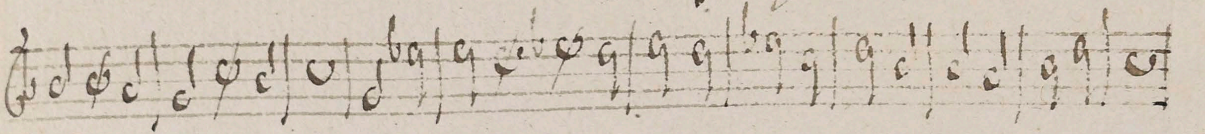
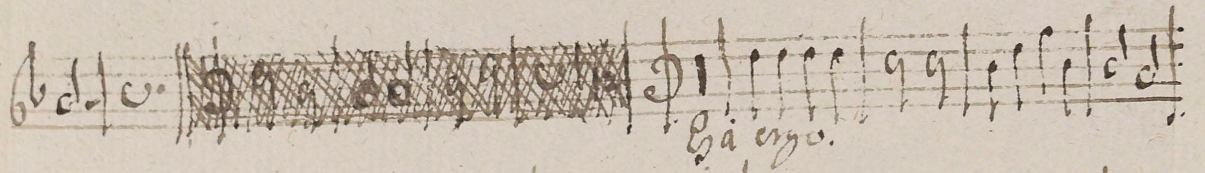
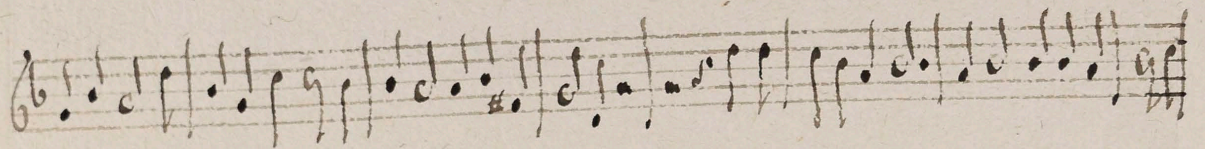
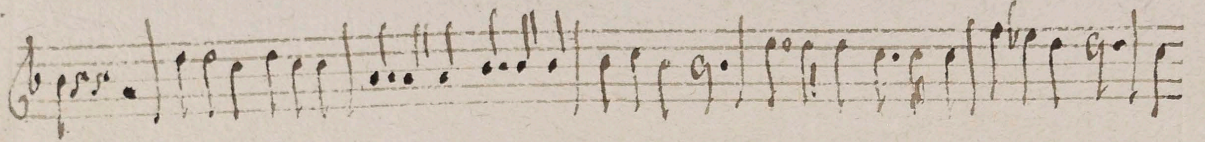
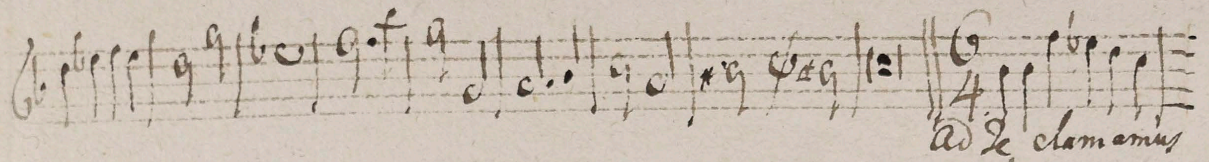
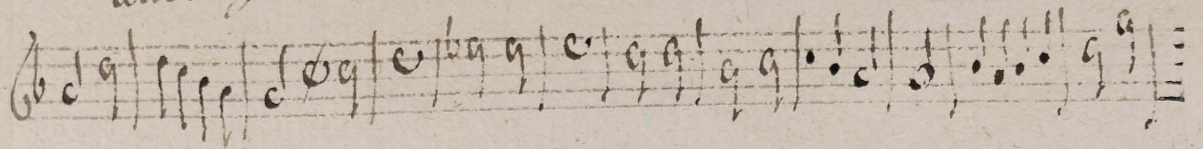
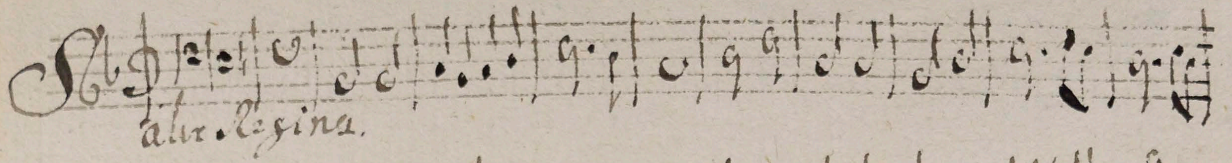
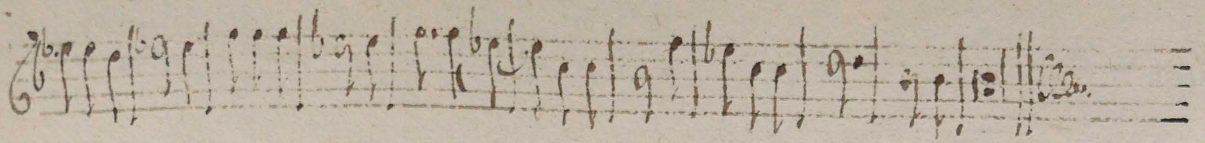
Handwritten musical notation on a five-line staff, 3/4 time signature.

Handwritten musical notation on a five-line staff, 3/4 time signature. *Quand Cal.*

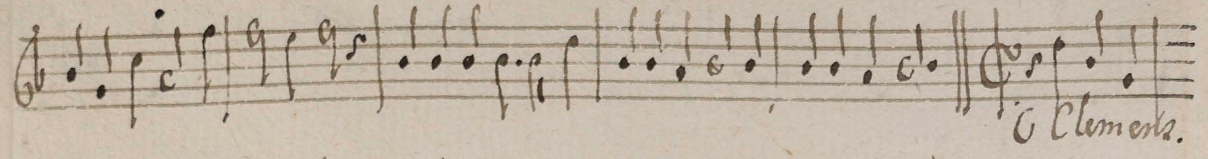
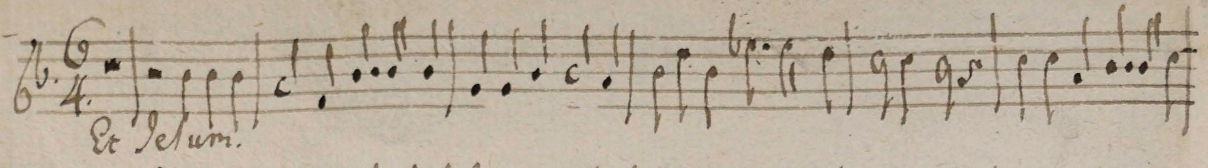


ante

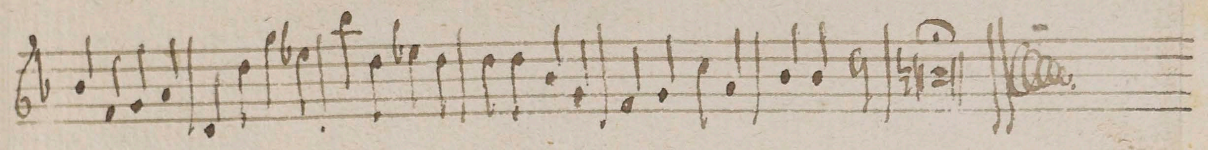
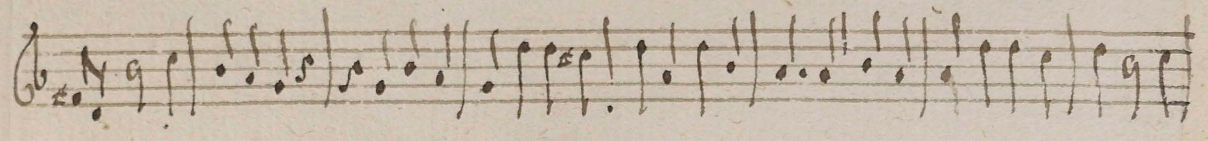




Et Iesum.



O Clementis.



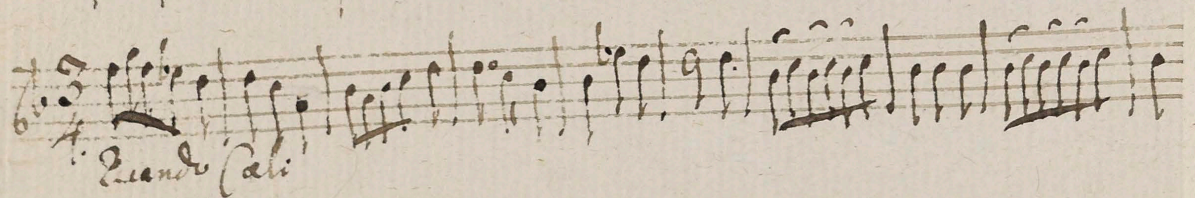
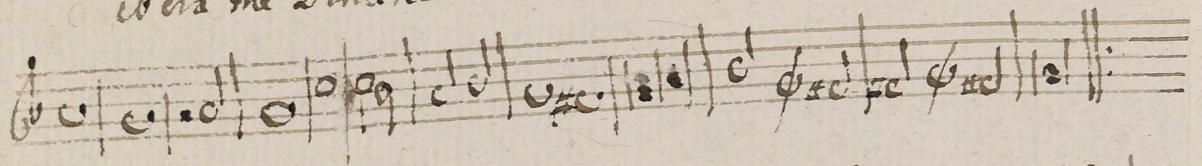
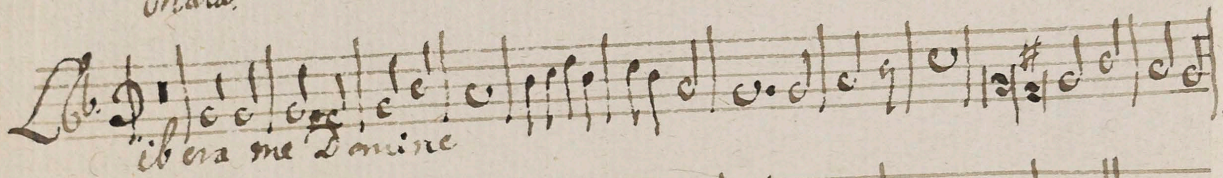
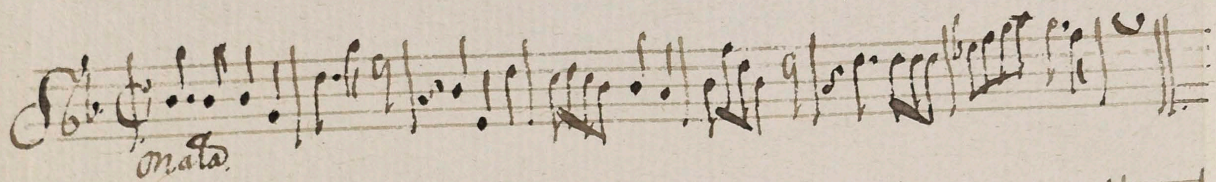
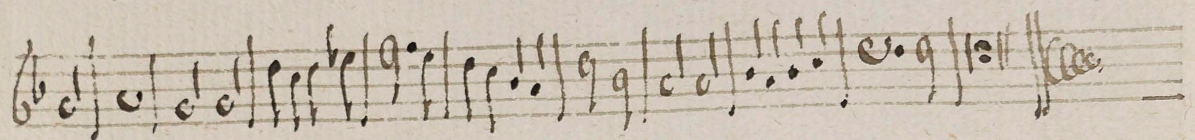
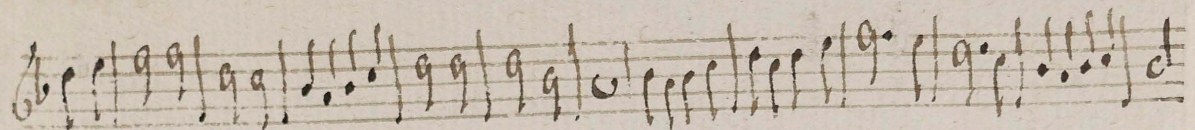
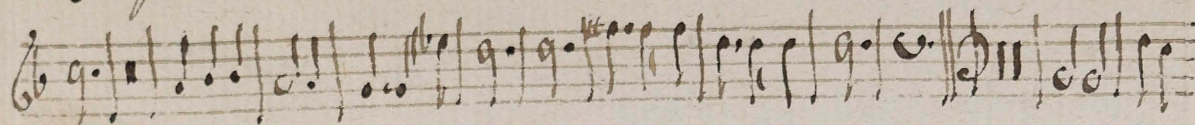
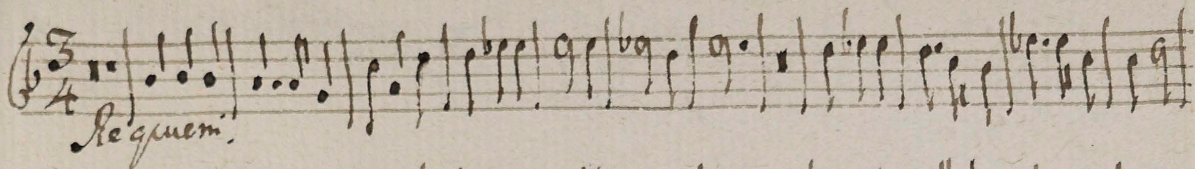
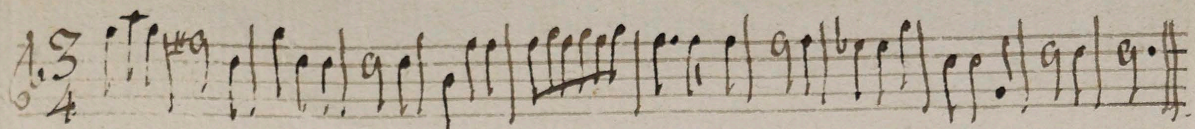
Viò lino Edo.

3
4
nata

6

Ascipiente.

arte cito



Musical staff 1

Musical staff 2

Dum.

Musical staff 3

Musical staff 4

Musical staff 5

Tremens

Musical staff 6

Musical staff 7

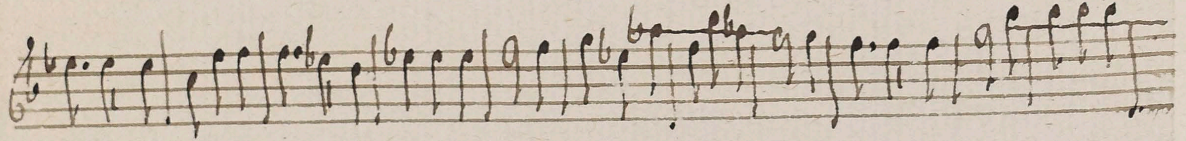
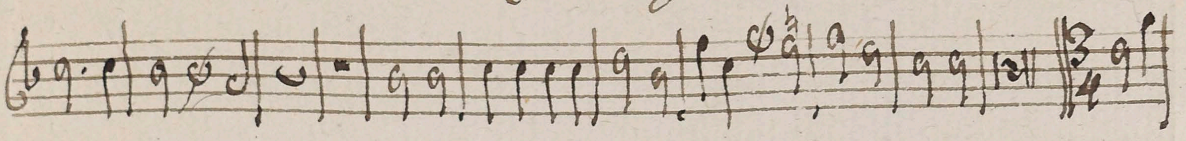
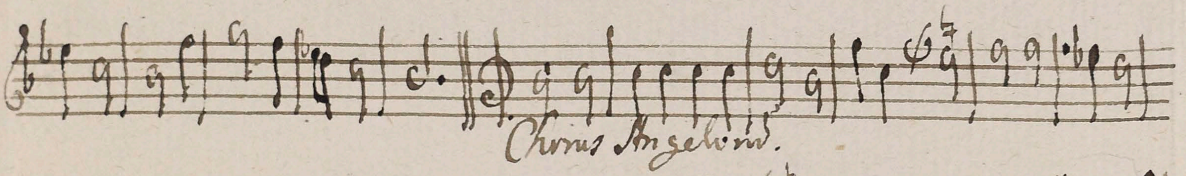
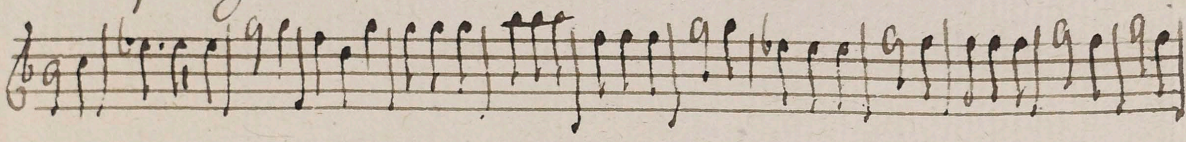
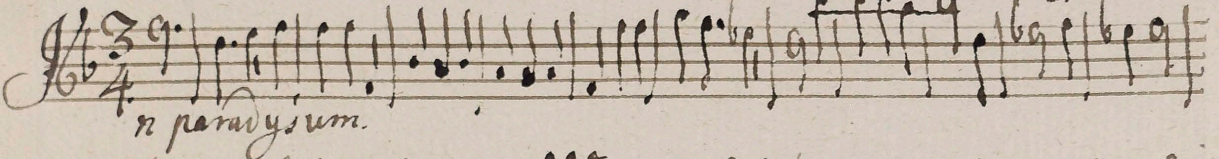
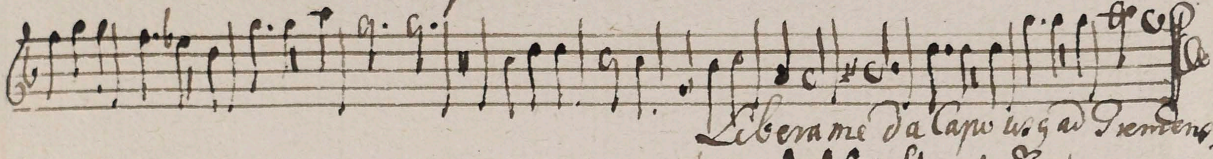
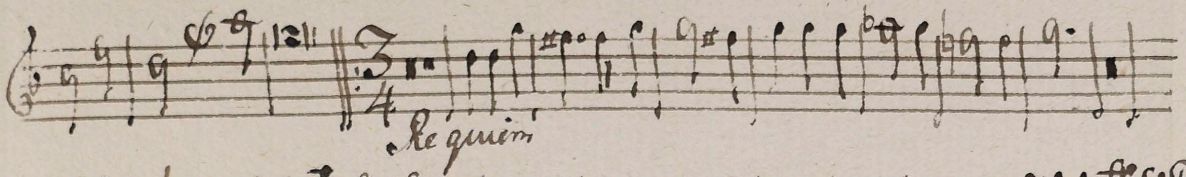
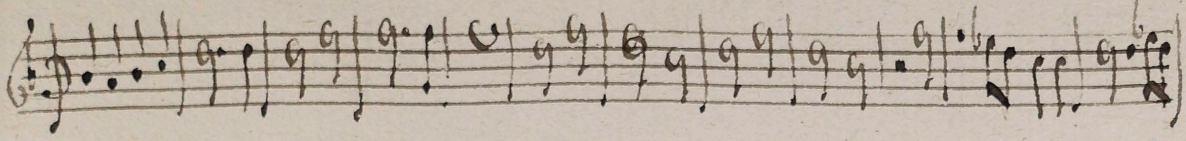
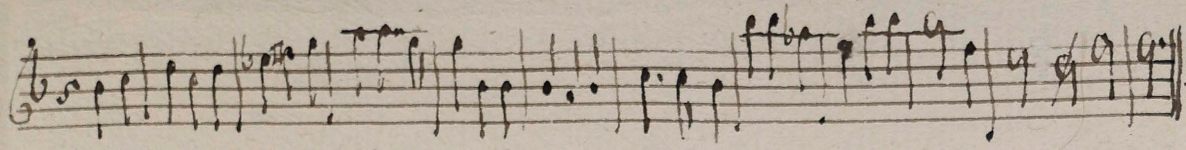
Quando.

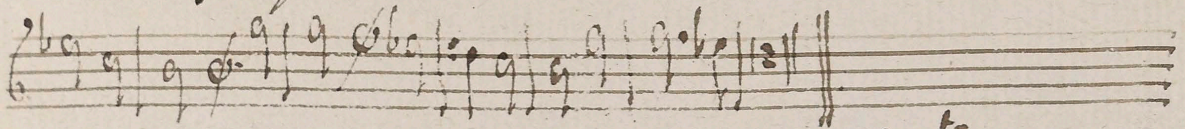
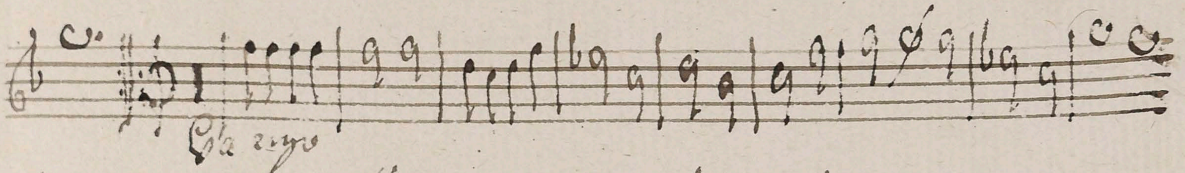
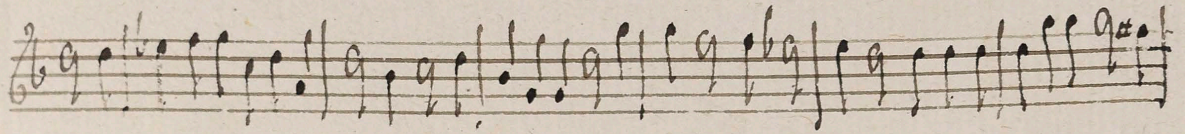
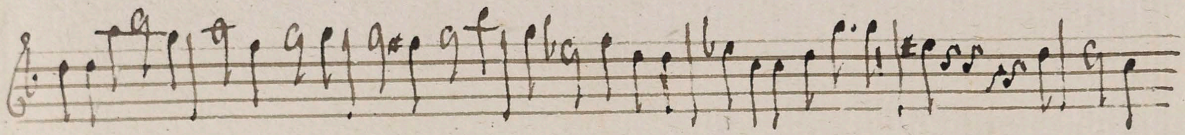
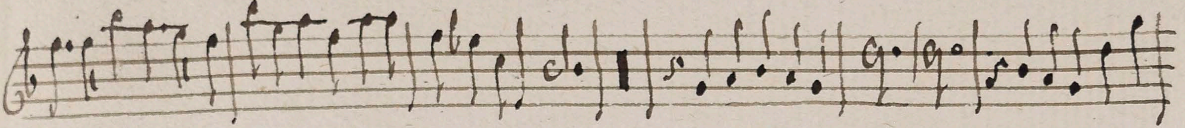
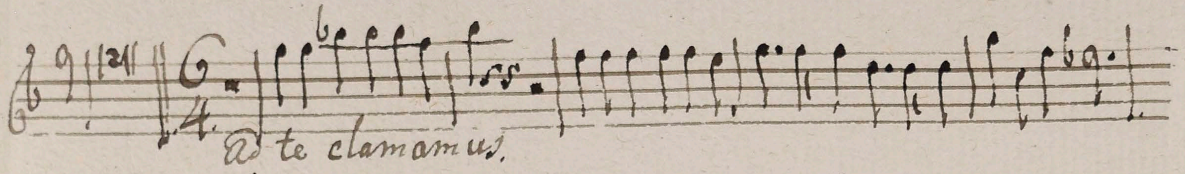
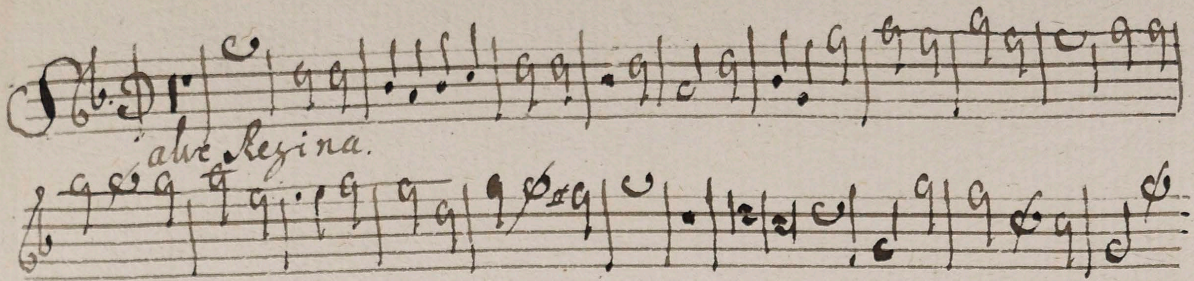
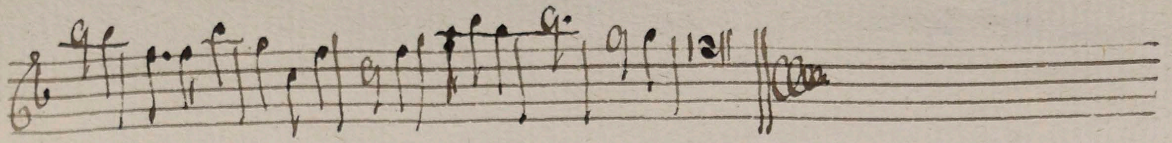
Musical staff 8

Quiesilla

Musical staff 9

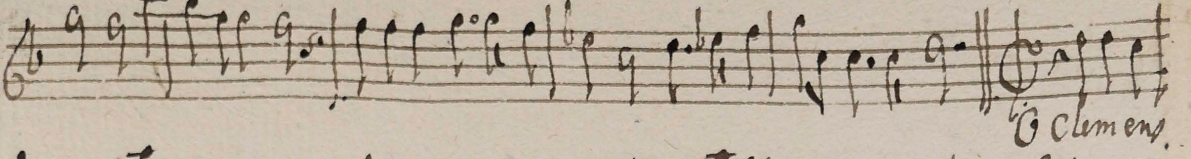
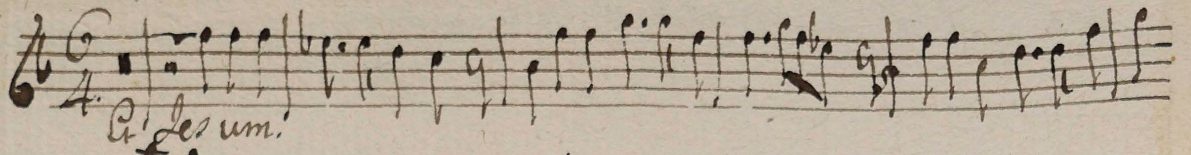
Forti cito



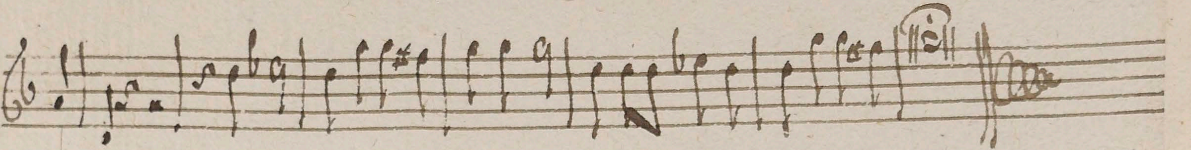
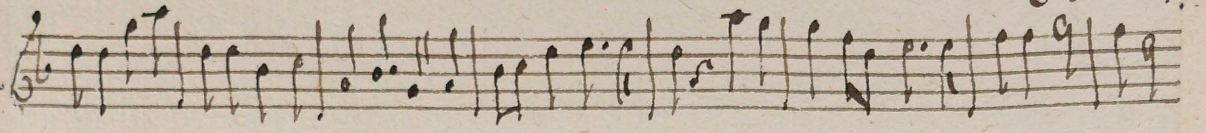


ante

4. *Q. Jesum.*



O Clemens.



Clarinno Amv.

Handwritten musical score for Clarinet in A major, featuring ten staves of music. The score includes various annotations and time signatures:

- Staff 1: *onata*
- Staff 2: *Subveni te*
- Staff 3: *Offerentes*
- Staff 4: *Incipiat.*
- Staff 5: *te x/ten.*
- Staff 6: *Requiem*

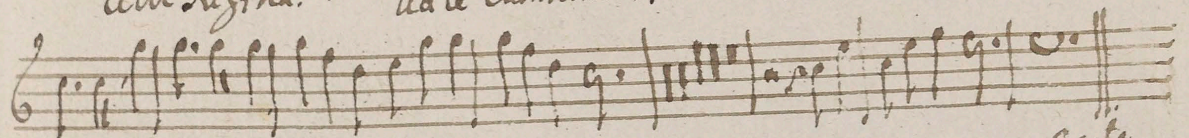
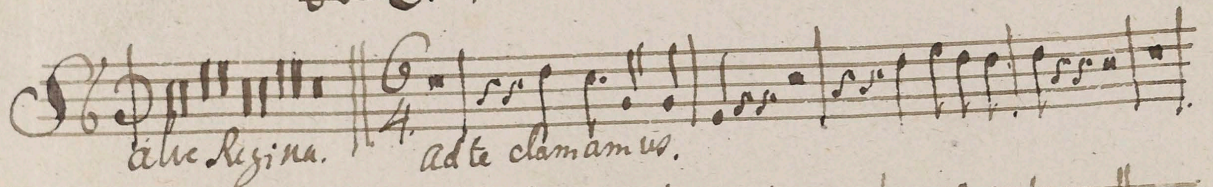
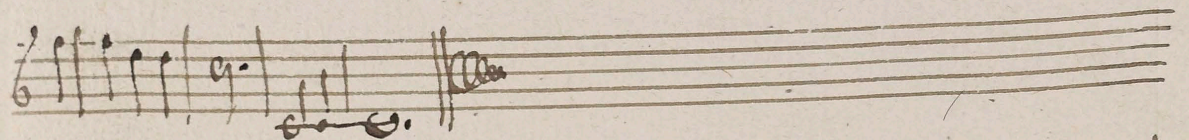
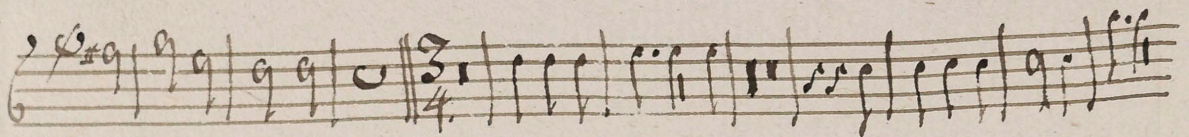
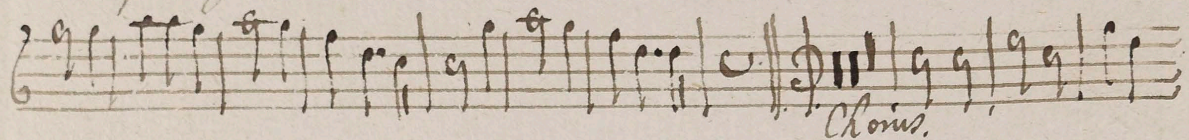
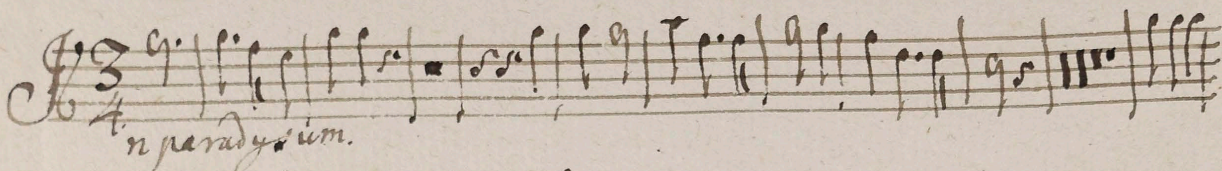
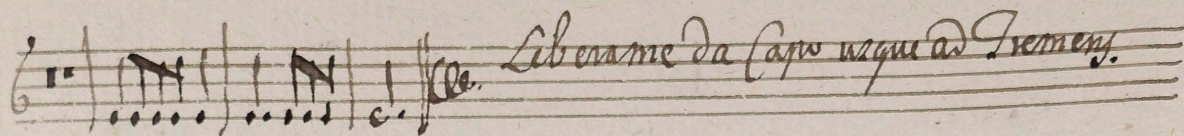
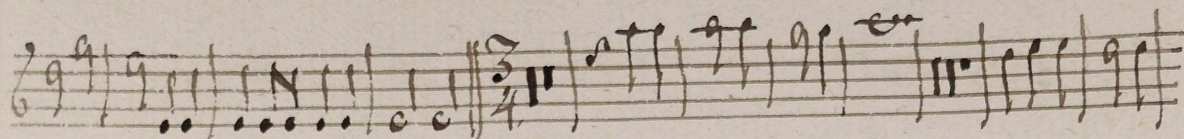
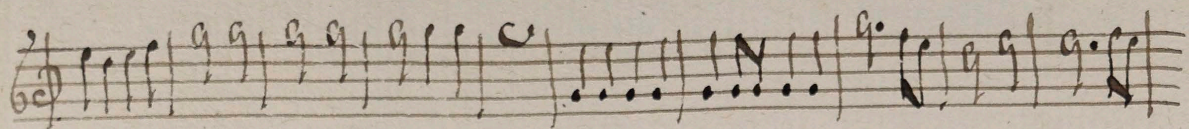
The music is written in treble clef with a key signature of one sharp (F#). The time signatures vary throughout the piece, including 3/4, 4/4, 3/8, and 2/4. The notation includes various rhythmic values, accidentals, and dynamic markings.

onata. *Liberae*

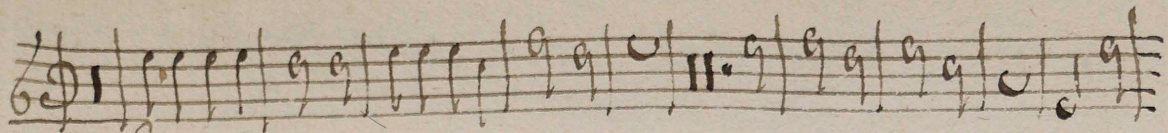
Quando Celi

Dum veneni

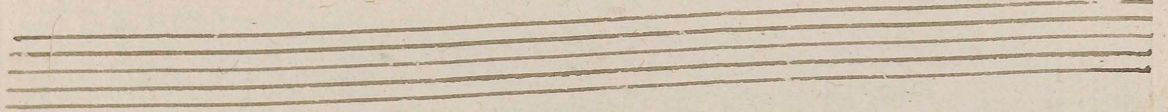
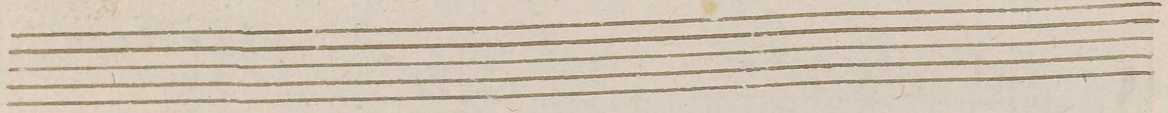
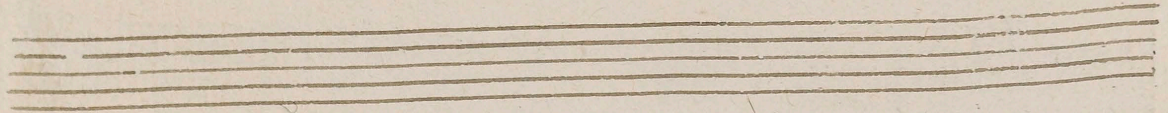
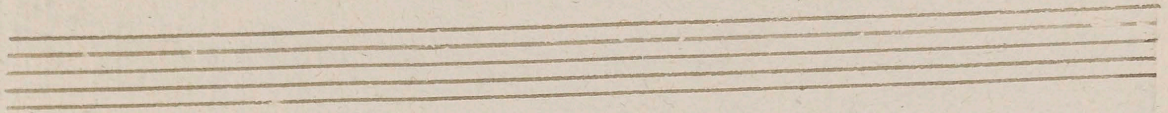
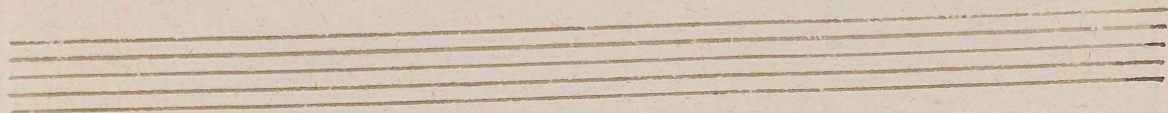
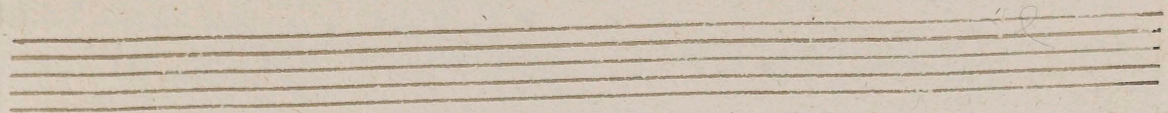
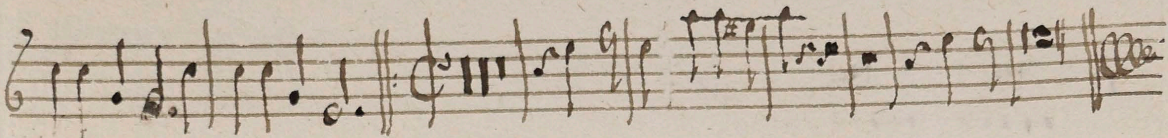
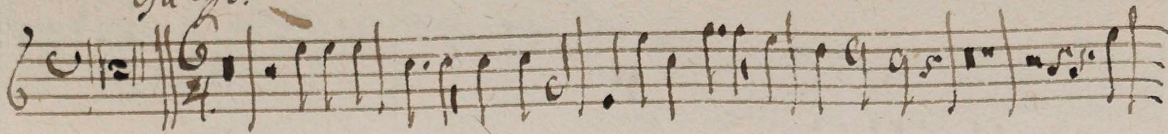
Tremens.



acito



Ha. vno.



Clavino Solo.

mata

Abrenite.

Rescipientes

Offendentes

Rescipientes.

Sequentes

Finitus.

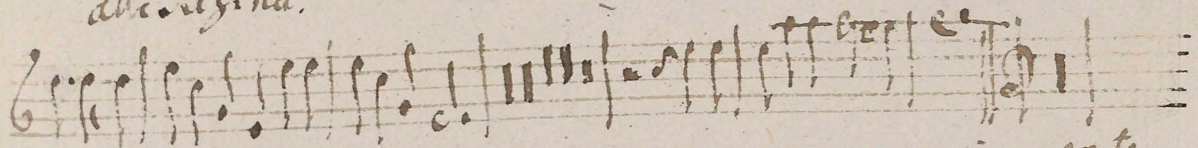
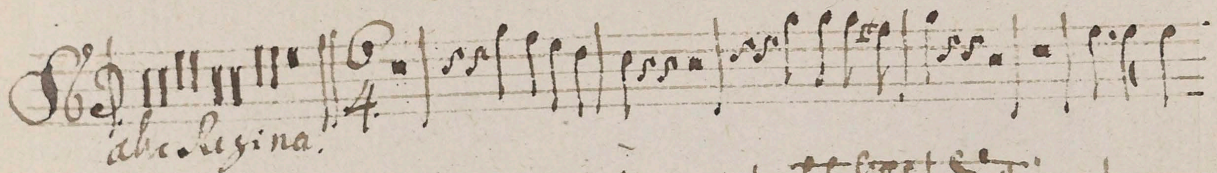
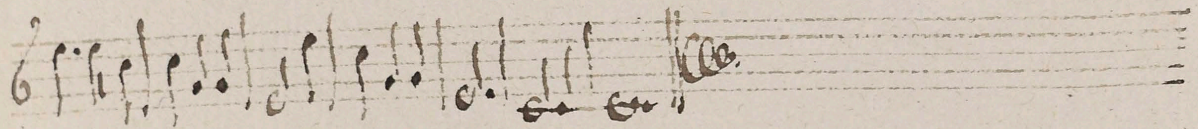
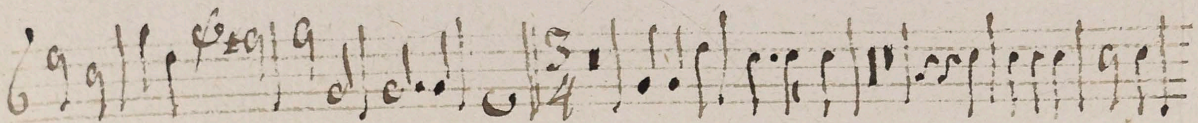
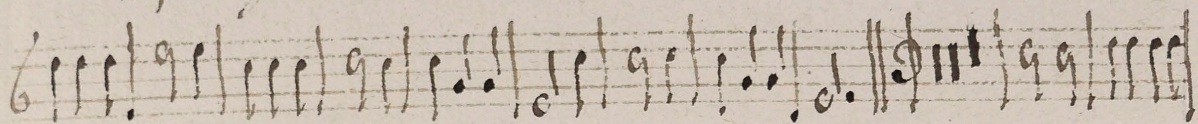
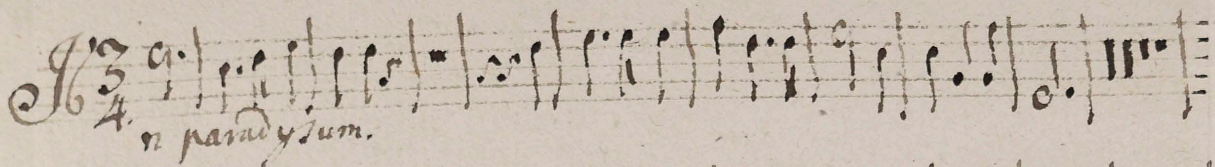
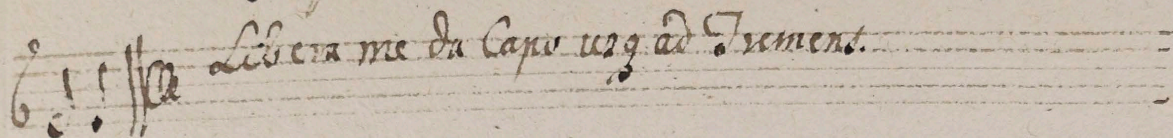
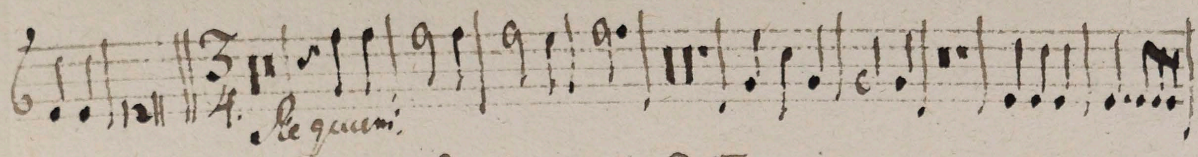
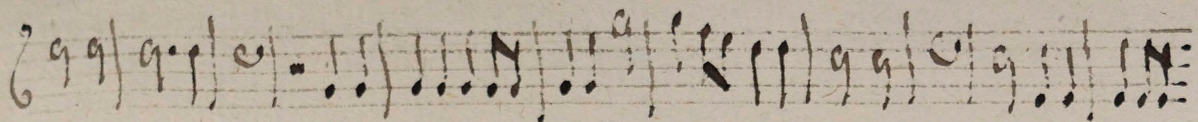
onata.

Liberate me.

Dum venis

Tremens.

Duo illa



ante

Handwritten musical notation on a single staff, featuring rhythmic patterns and notes.

Gai us.

Handwritten musical notation on a single staff, featuring rhythmic patterns and notes.

Handwritten musical notation on a single staff, featuring rhythmic patterns and notes.

O clemens.

Handwritten musical notation on a single staff, featuring rhythmic patterns and notes.

Five empty musical staves.

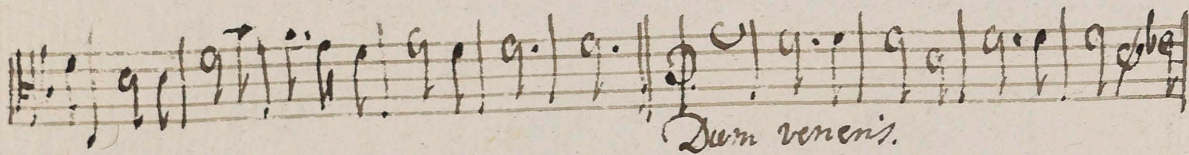
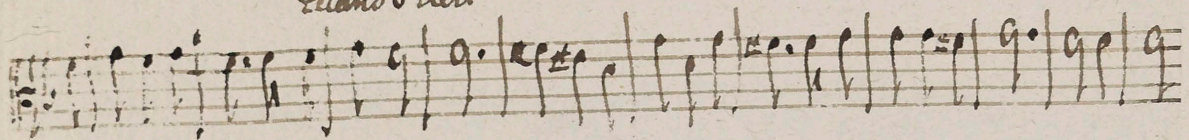
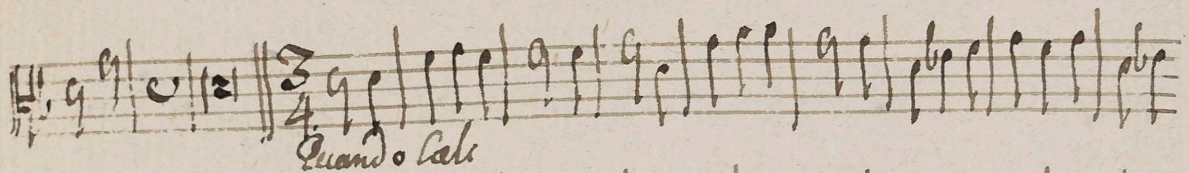
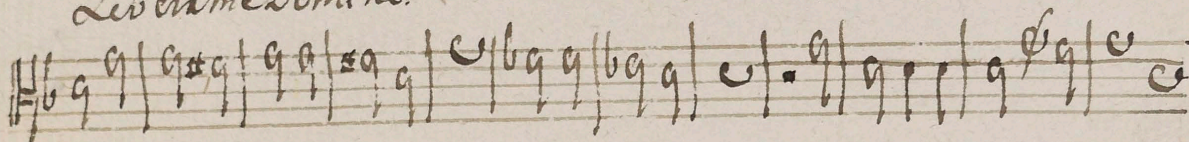
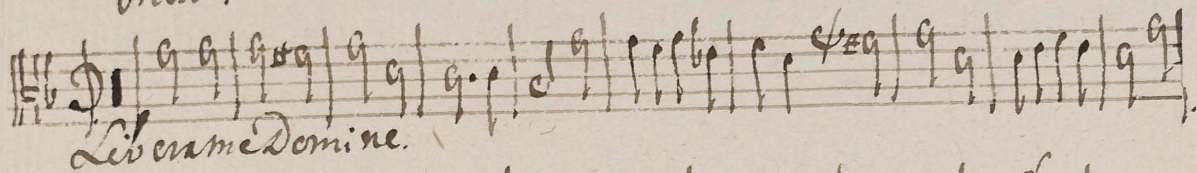
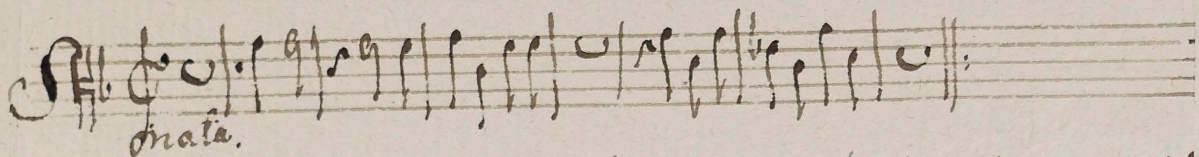
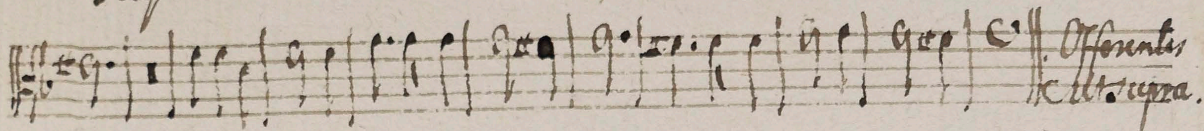
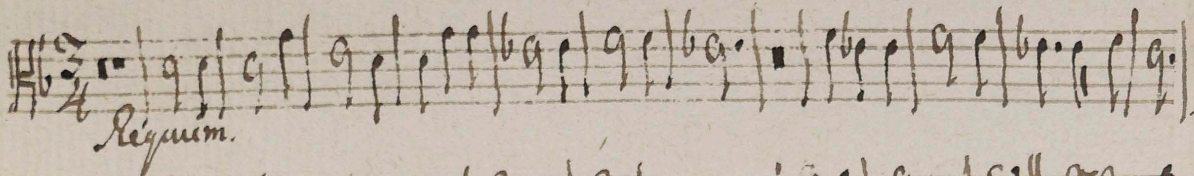
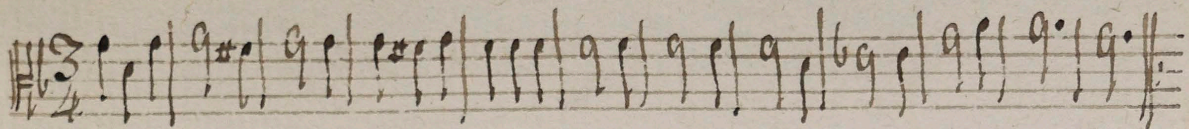
Alto viola.

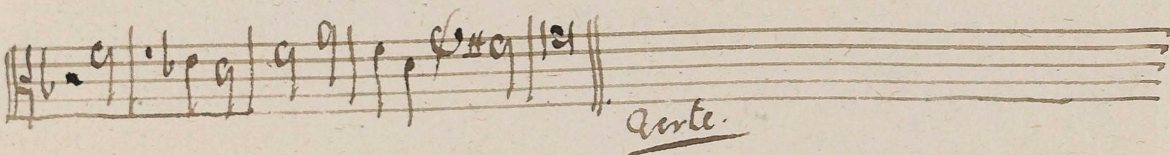
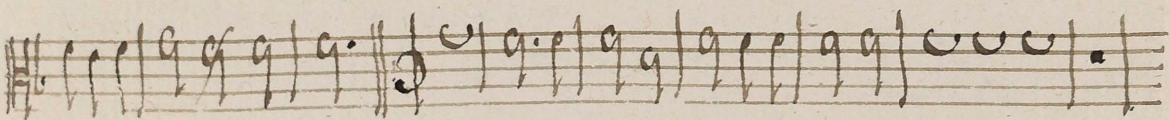
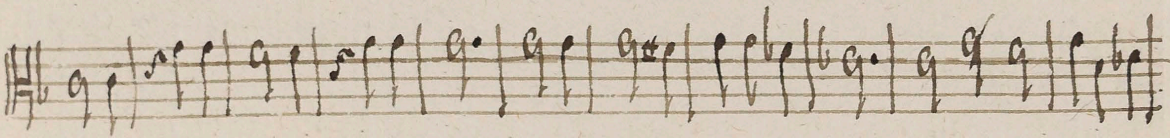
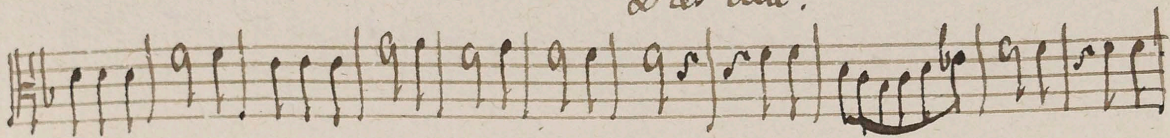
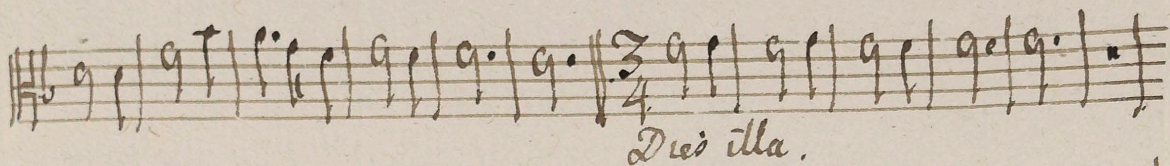
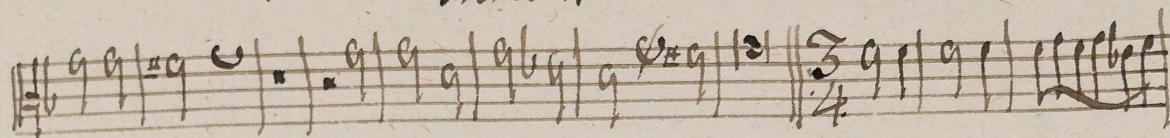
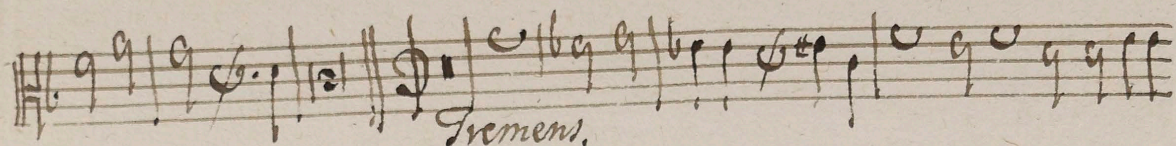
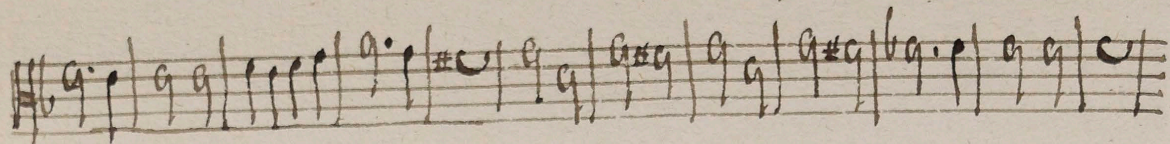
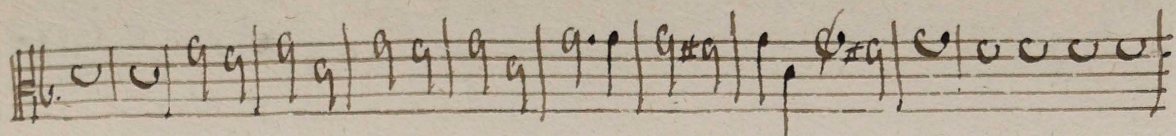
on ato

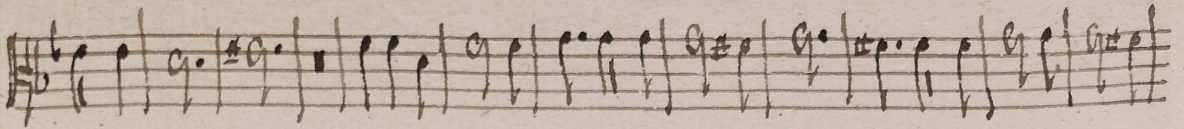
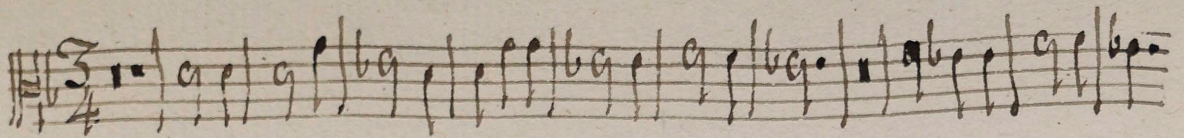
Subamite

Offerentes eam.

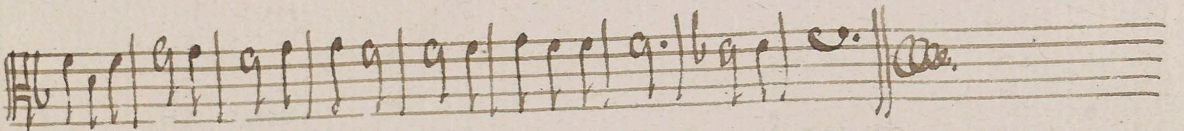
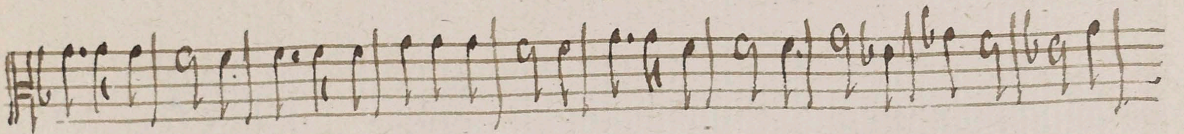
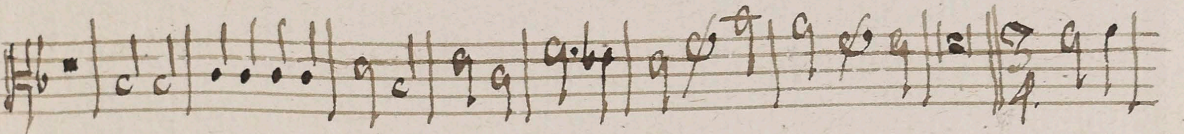
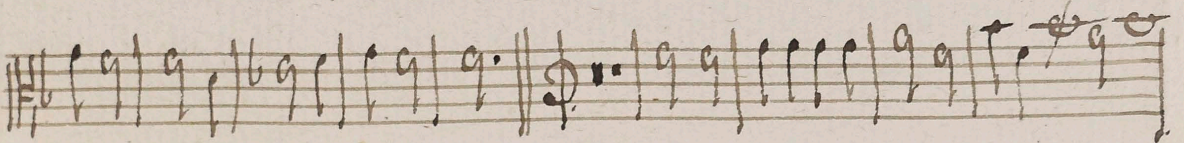
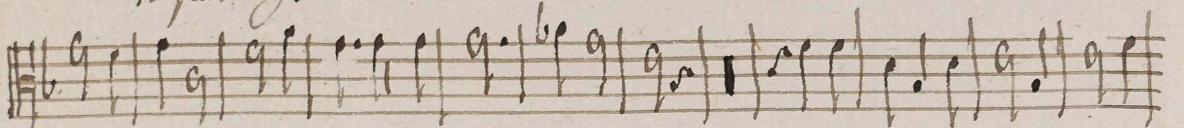
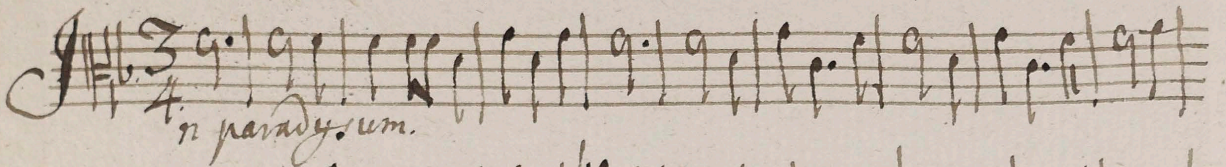
Accipiat.







Liberam me da Capo usque ad Tremens.



alic Regina.

Ad te clamamus.

Ga cyv.

Handwritten musical notation on a five-line staff. The key signature is one sharp (F#) and the time signature is 4/4. The notation includes quarter notes, eighth notes, and sixteenth notes with stems.

Handwritten musical notation on a five-line staff, continuing the piece with various rhythmic values and accidentals.

Handwritten musical notation on a five-line staff, featuring a change in key signature to one flat (Bb) and various note values.

Handwritten musical notation on a five-line staff, continuing the composition with complex rhythmic patterns.

Handwritten musical notation on a five-line staff, ending with a double bar line and a fermata-like flourish.

Four empty five-line musical staves, providing space for further notation.

Conductus Funebris

Canto Alto ^{A. H. H.} Tenore Basso

2 Violin.

2 Clarin.

Viola Alto

one vel Basso Trombone

e Organo.

A. G. G. Gorsyckei.

Ohelis Ratu uenit Saenon
Raptori Saenilegium.

