

Motetto pro Offertorio
Assumpta est Maria in Cælum.

a 9
Canto Alto Tenore Basso.
2 Violin
2. Litui
Con. Organo.

A Don. Lechleitner

Ecclesiæ Parochiali Sacrorum Sacrum
Capituli Sacri legium.

Alto

sumpta est. Assumpta est Maria assumpta
est assumpta est Maria assumpta est Maria in Caelum
in Caelum in Caelum. assumpta assumpta est Maria as
sumpta est Maria Maria assumpta est.
assumpta est Maria. in Caelum
Maria in Caelum assumpta est. Assumpta est Ma
ria in Caelum as sumpta est assumpta assumpta
est Assumpta est Maria. assumpta est.

Maria assumpta est assumpta est in Caelum af
 sumpta est Maria assumpta est. Mari
 a in Caelum assumpta est. *Andante* Gau - -
 - dent Angeli *Collaudan* tes
 bene dicunt be - - ne dicunt Col laudantes
 benedi cunt Domi num benedicunt. bene di cunt Domi
 num. *Assumpta est de Capu.*
 num.

Adm. 91

Basso

sumpta est. assumpta est Maria in
 Cae - lum assumpta est Maria in Caelum Assumpta est
 Maria assumpta est Maria assumpta est Maria Mari
 a in Caelum. Assumpta est Maria in Caelum assumpta
 est Maria. in Caelum in Cae - lum assumpta est in Caelum
 assumpta assumpta Maria in Caelum. in Caelum as
 sumpta est. assumpta est Maria assumpta est Maria
 assumpta est Maria assumpta est assumpta est assum -

pta est as sumpta est assumpta est Maria in Caelum
 Maria in Caelum assumpta est. *Andante.* Pau - dent
 Pau - dent An - - - - - geli Col laudon -
 - tes benedi cunt. Col laudantes be - -
 ned i cunt Do mi num beno di cunt benedi cunt Do mi num.
 Assumpta est de Capu.



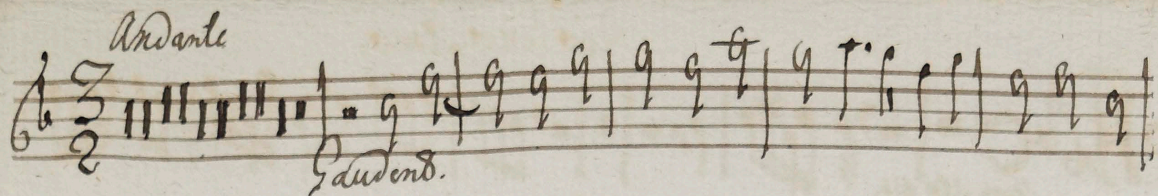
Adm'd Gm'

Violino Solo.

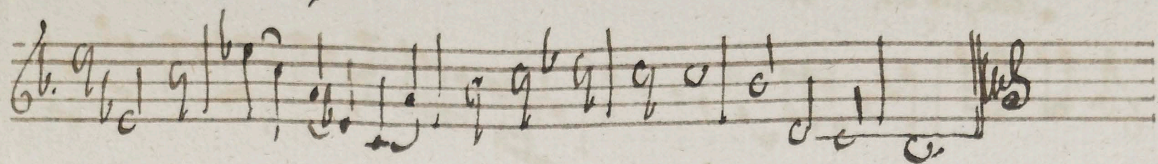
sumpta est.

ante

Andante



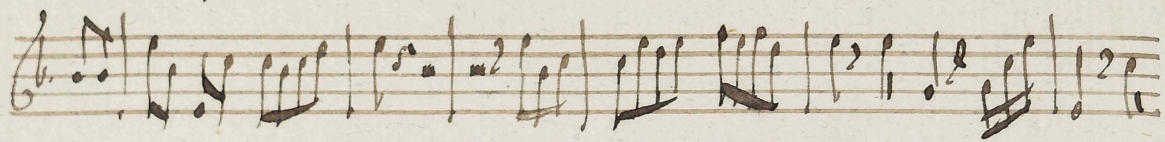
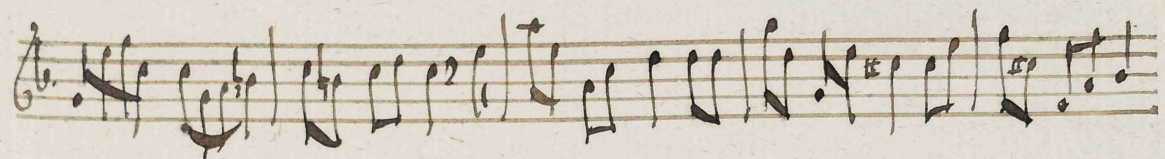
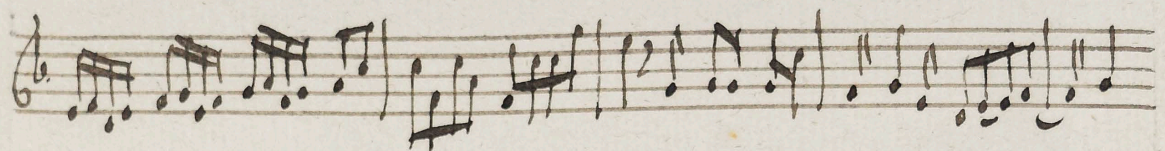
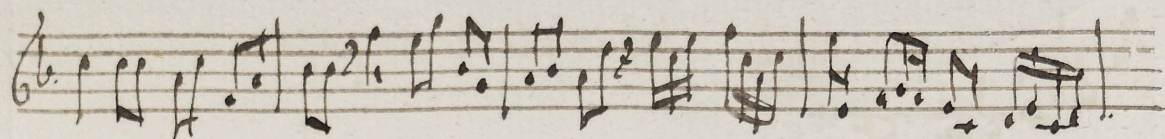
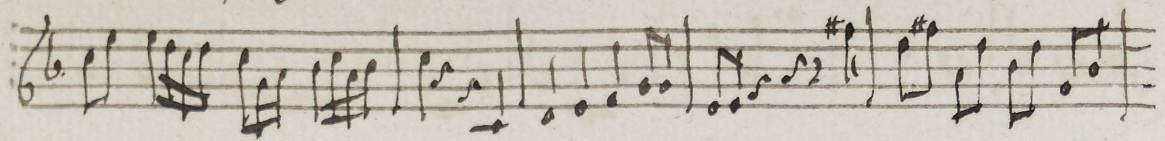
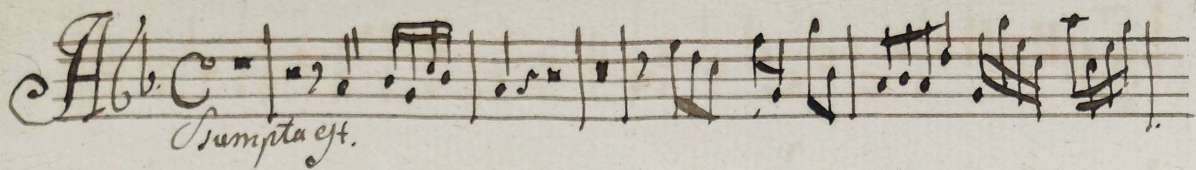
Gaudend.

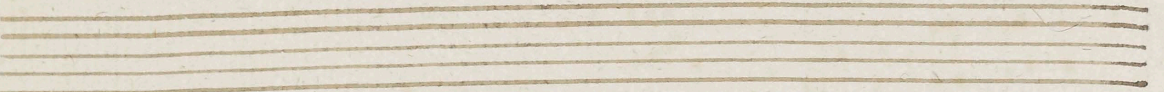
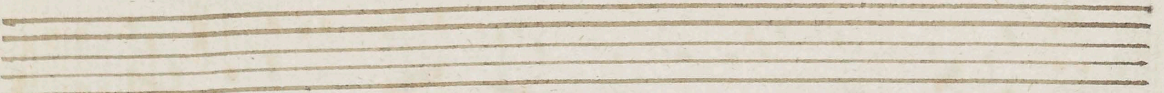
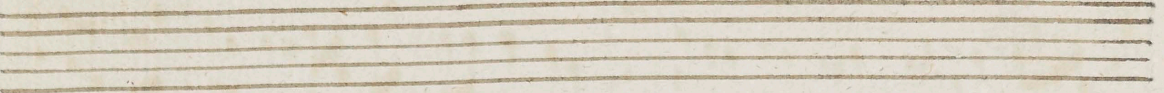
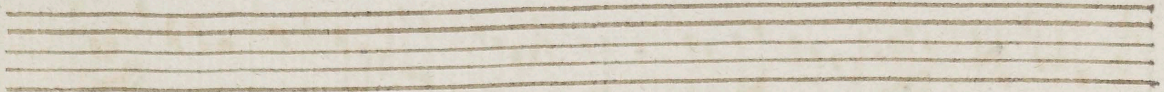
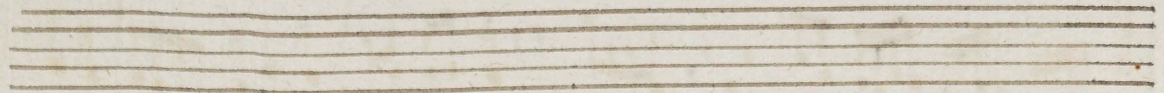
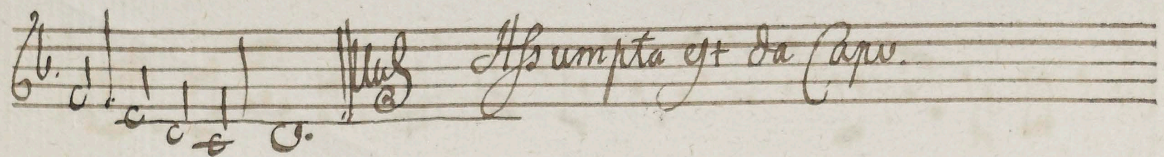
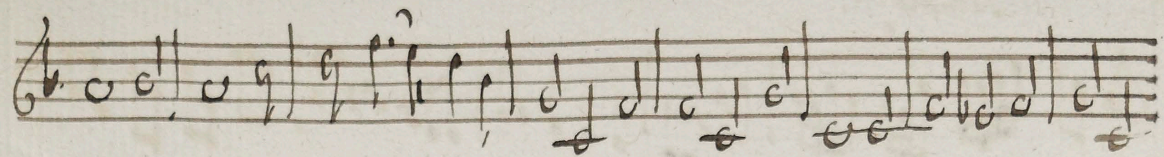
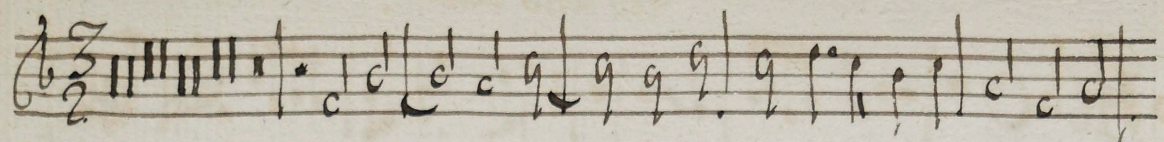


Affumpto ex da Capo.

ad m d fm

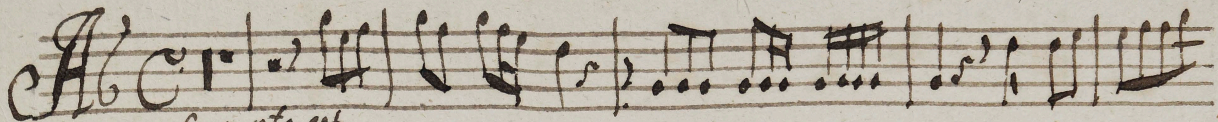
Vivino Edel



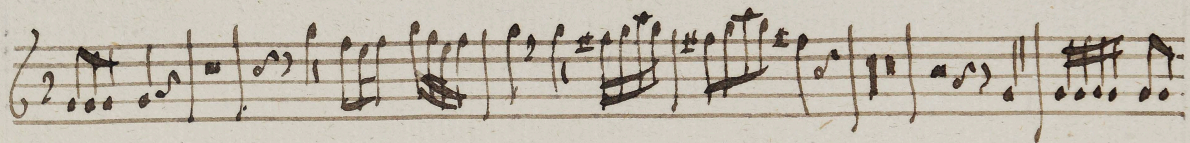
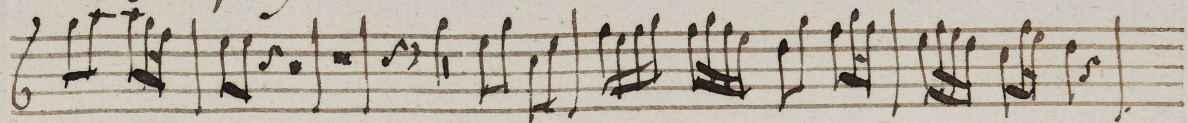


Lituo. No. 5.

5



Sumpta est.

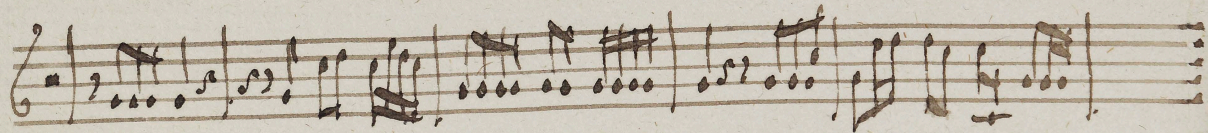
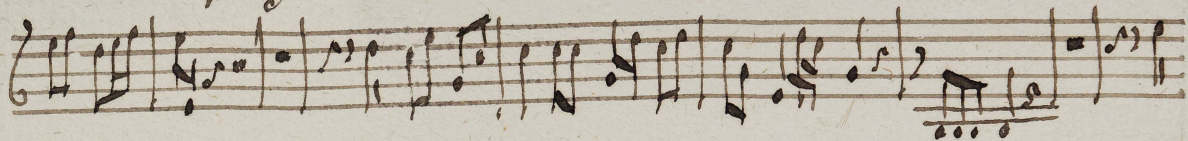
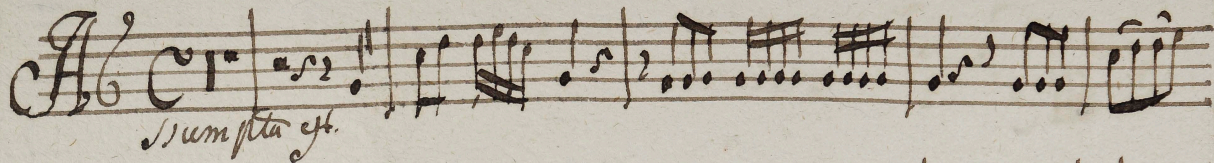


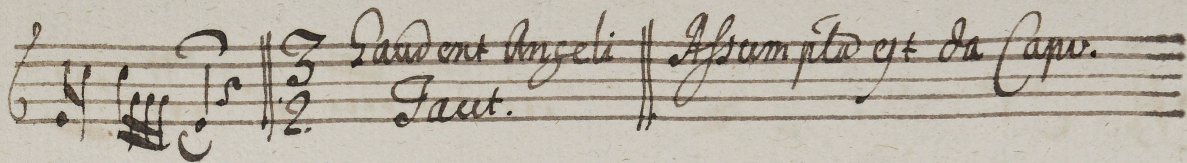
 *3* *Andent* || *Ad unghia et*
2 *Facet.* || *da Capo.*

Ad m. d. m.

Lituo 2do.

6





Caeleſtes Angeli ||
Faut. ||
Aſſumptio et da Capo.

Adm Dm.

7 Tutti

Organo

Handwritten musical score for organ, featuring multiple staves of music. The score includes various annotations such as *sumpta est*, *andante Solo*, and *Saudant Angeli*. The music is written in a style characteristic of 17th or 18th-century manuscripts, with numerous ornaments and complex rhythmic patterns. The score is divided into sections, with the first section marked *Tutti* and the second section marked *andante Solo*. The organ part is indicated by the word *Organo* at the top. The score is written on a single page of aged paper, with the page number 7 in the top left corner. The music is written in a single system, with the organ part on the top staff and the vocal parts on the lower staves. The organ part is written in a treble clef, and the vocal parts are written in a bass clef. The score is written in a style characteristic of 17th or 18th-century manuscripts, with numerous ornaments and complex rhythmic patterns. The score is divided into sections, with the first section marked *Tutti* and the second section marked *andante Solo*. The organ part is indicated by the word *Organo* at the top. The score is written on a single page of aged paper, with the page number 7 in the top left corner. The music is written in a single system, with the organ part on the top staff and the vocal parts on the lower staves. The organ part is written in a treble clef, and the vocal parts are written in a bass clef.

A handwritten musical score consisting of six staves. The notation is in a single system, likely for a multi-measure rest or a specific rhythmic exercise. The notation includes various note values (quarter, eighth, and sixteenth notes), rests, and bar lines. There are several measures with a '49' written above them, possibly indicating a measure number or a specific rhythmic value. The final measure of the first five staves ends with a double bar line and a repeat sign. The sixth staff begins with a treble clef and a key signature of one flat (B-flat), followed by the text 'Assumptio eius da Capu' written in a cursive hand.

Assumptio eius da Capu

