



Mottetum I  
De S. Corpore X<sup>ti</sup>  
Ad Iesum Agnum Sacratum.

Canto Alto Tenore Basso  
Cum 2. Violinis  
2. Clarinis  
& Basso continuo.

Eclesie Ruhl. Raurung. Aemum  
Kapitel Aemlegium.

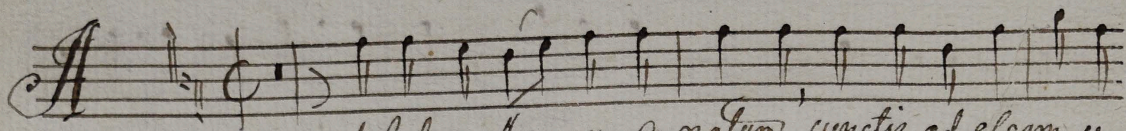
Canto

A  
d Iesum Agnum Sa cratum cunctis ad esam  
oblatum Ad Iesum Agnum Sa cratum cunctis ad esam  
oblatum panem dulcem Panem dulcem Ange lo rum 'cibum' sa  
vum esse no num Panem dulcem Ange lo rum 'cibum' sava  
m Panem dulcem Ange lo rum 'cibum' sava m esen num 'cibum' sava m  
esen num Accurri te Accurri te Manna re,  
latum desuper datum arripite arripite arripite.

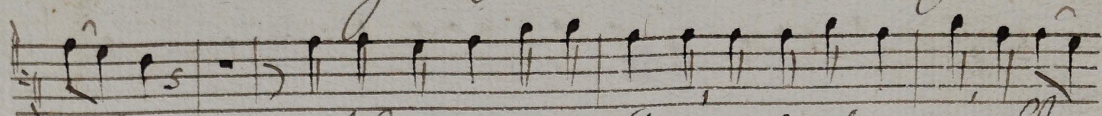
Cor ex purgate gloriam gloriam date Cre a to  
ri date gloriam Cre a to ri Pau per et Di ves Pon tes et  
Ci ves Sal va to ri Al le lu ia Al le lu ia Al  
le lu ia Al le lu ia al le lu ia — al le  
lu ia al le lu ia al le lu ia Al le lu ia.



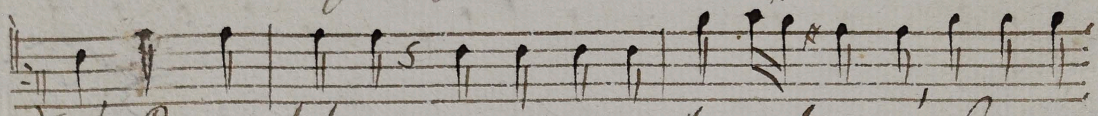
Alto



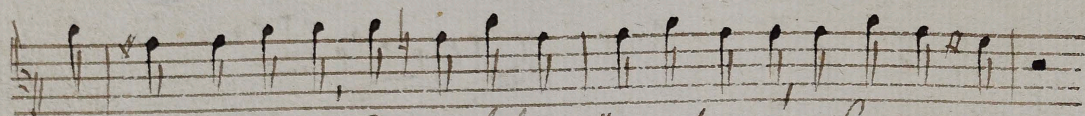
d Jesum Agnum sa cratum cunctis ad escam u



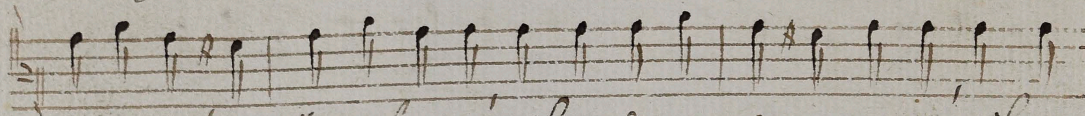
blatum ad Jesum Agnum sa cratum cunctis ad escam o bla



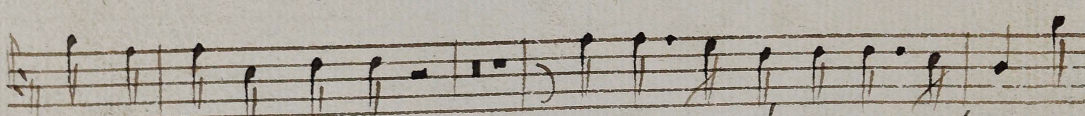
tum Panem dulcem Angelorum cibum sa



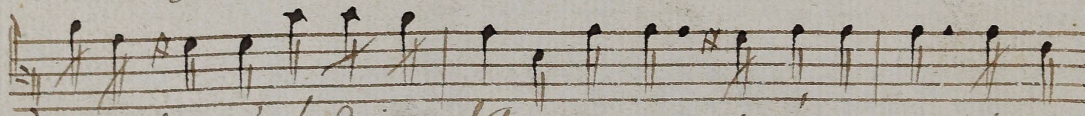
crum eze no num Panem dulcem Angelorum cibum sa crum



Panem dulcem Angelorum cibum sa crum eze no num cibum



crum eze no num Accurrite accurrite Man



na ve latum desuper datum Arri pi te arri pi te

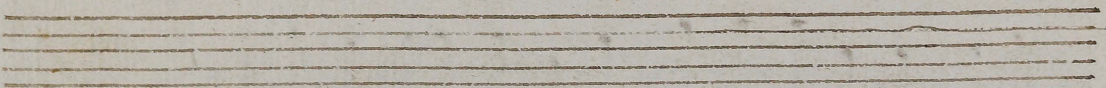
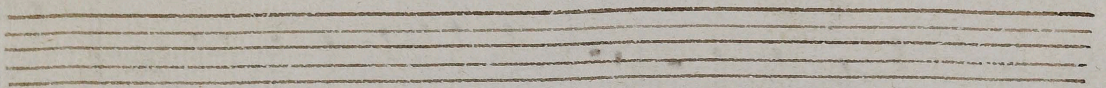
Anni pite Cor expur gate glori am glori am

date Crea to ri' date glori am Crea to ri Pau

per ex Di ves gen tes et Cives Sal va to ri' Alle lu ia

Alle lu ia Alle lu ia Al - - - - le

Alle lu ia Alle lu ia Alle lu ia Alle lu ia.



Tenore

**A**

d Iesum Agnum Pa cratum cunctis ad e scem e  
 Blatum Ad Iesum Agnum Pa cratum cunctis ad e  
 scem e Blatum Panem dulcem panem dulcem Ange lo rum' cibum  
 Navem ege no rum' panem dulcem Ange lo rum' cibum Navem  
 Panem du leum Ange lo rum' cibum Navem e ge no rum' ci  
 bum Navem ege no rum' Manna celatum' desuper da  
 tum datum arri pi te ar ri pi te arri pi te.  
**3**  
**A** Cor expur gate gloniam gloniam date Cre a to

ri date gloriam Crea to ri Paupe re di ves gen te et Ci  
res Salva to ri Alle lu ia' alle lu ia' alle lu ia  
al - - - le alle lu ia alle lu  
ia alle lu ia - alle lu ia.

The image shows a handwritten musical score on aged paper. It consists of four staves of music. The first staff begins with a treble clef and a common time signature (C). The lyrics are written in a cursive hand below the notes. The second staff continues the melody. The third staff features a five-measure rest (indicated by a '5' and a horizontal line) followed by more notes. The fourth staff concludes the phrase with a double bar line and a fermata. Below the fourth staff, there are five empty staves.

Basso

A

d Iesum Agnum' Sa cratum' cunctis ad esum' o

blatum Ad Iesum' Agnum' sa cratum' cunctis ad esum obla

tum panem dulcem panem du lem An gelo rum' cibum sva rem eye

rum panem dul cem An gelo rum' cibum sva rem panem dulcem

An gelo rum' cibum sva rem exen rum' cibum sva rem exen rum

Esu ri en tes et Siti en

tes et Siti entes

Cor expe rante glo riam

glo riam date' Crea to ri' date glo riam Crea to ri' Pa ysa e

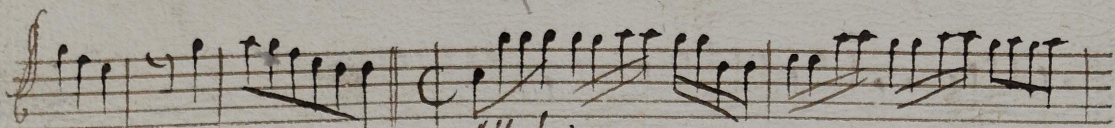
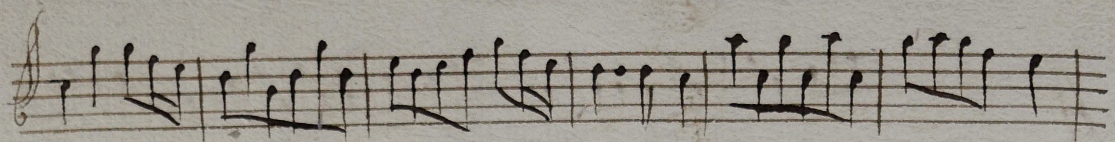


duis gentes et Cives Salvato ri Alle luia' alle lu  
ia Alle luia  
alle luia alle luia.

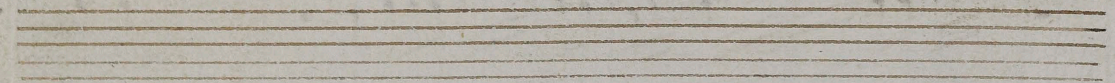
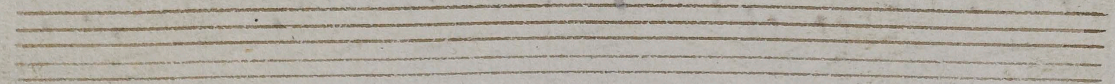
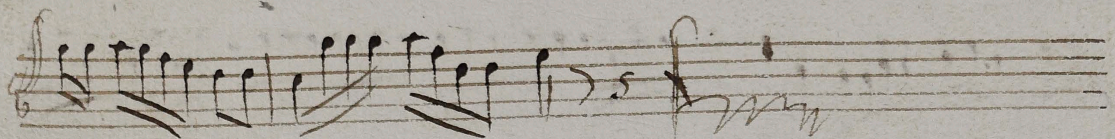
*A*

*d' Jesum.*

*3/4*  
*Cor ex purgato*

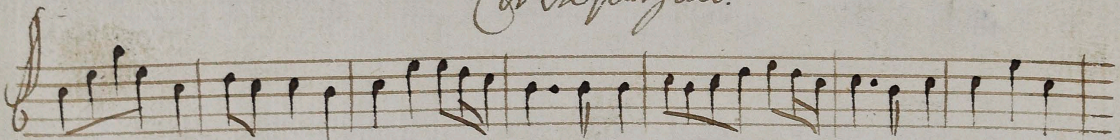
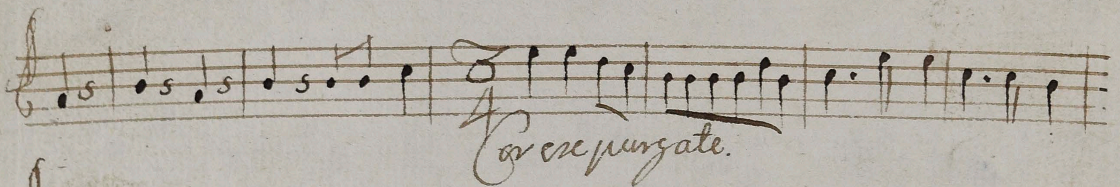
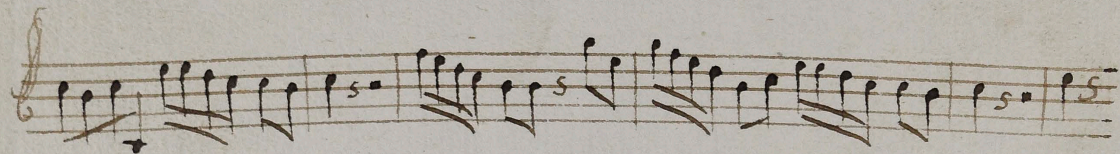
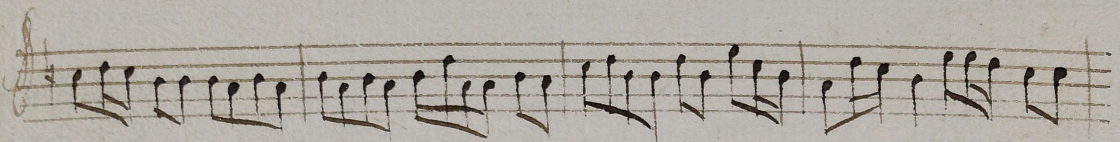
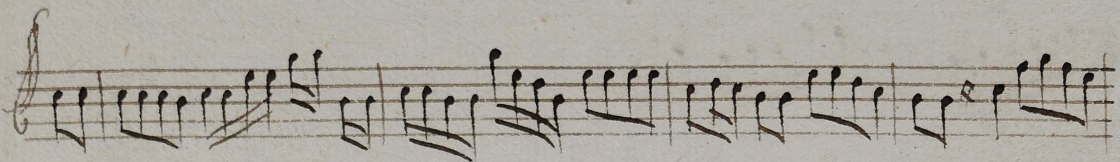
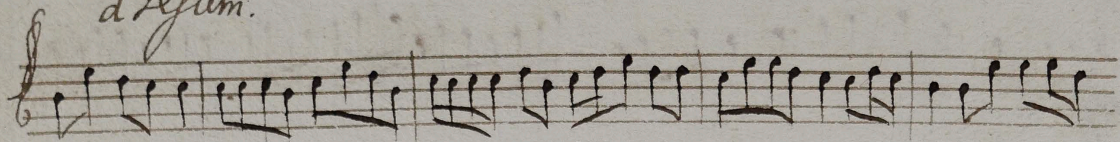
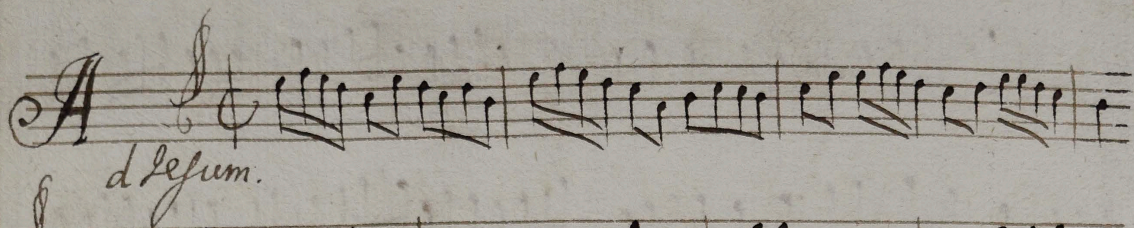


*Alleluia*



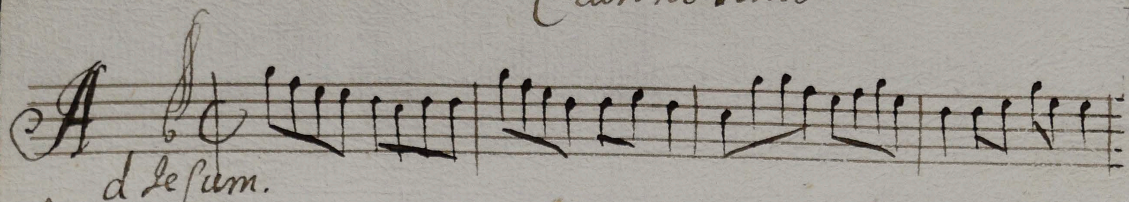
Violino Solo.

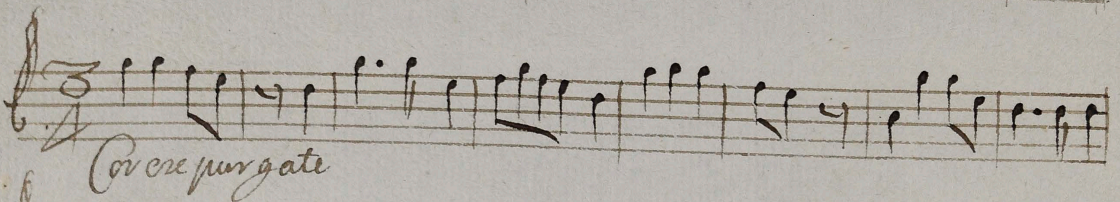
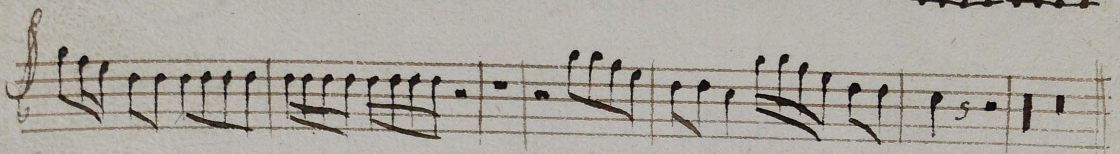
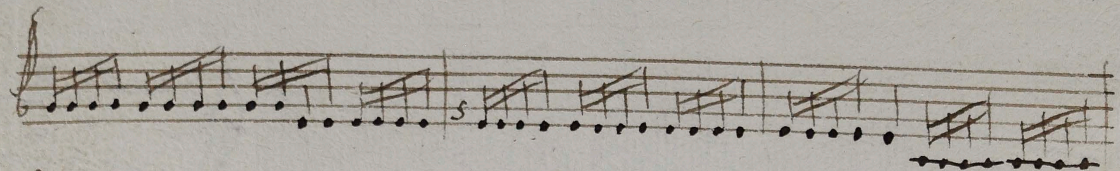
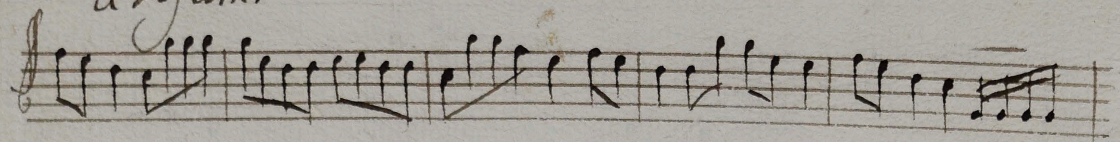
6



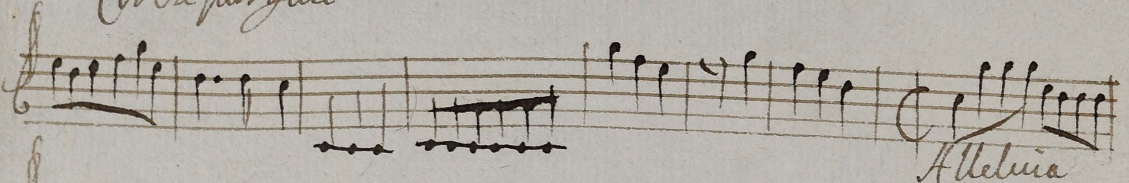


Clarineto Solo

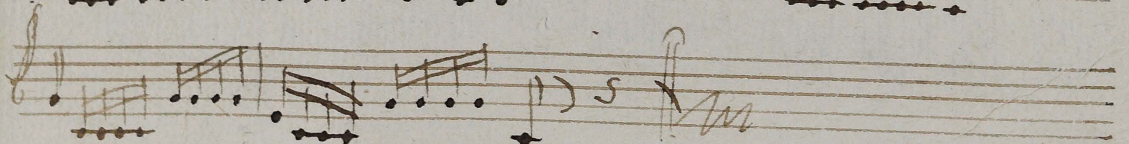
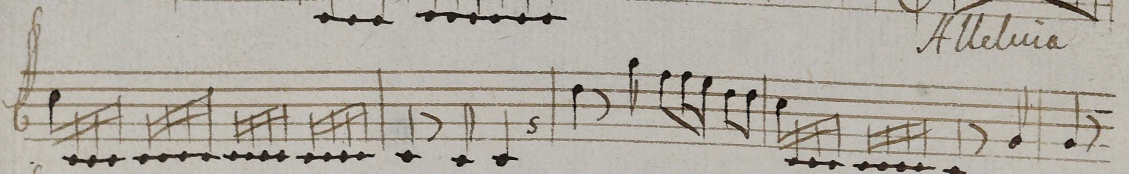
*A*  *d Jesum.*

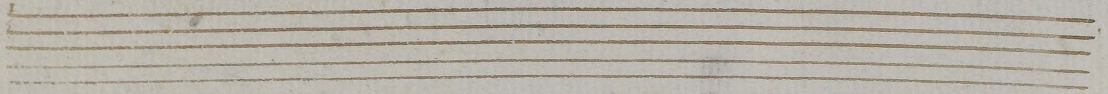
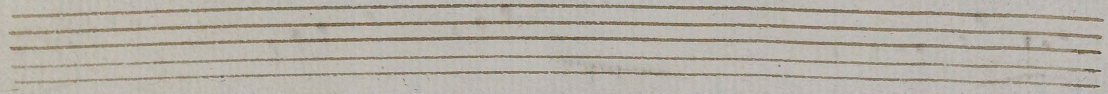
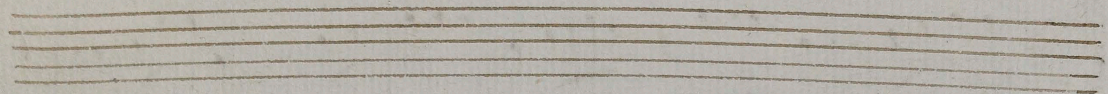
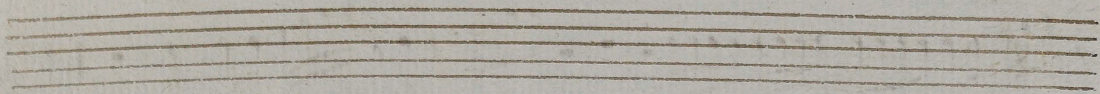
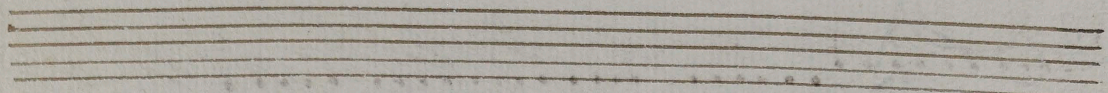
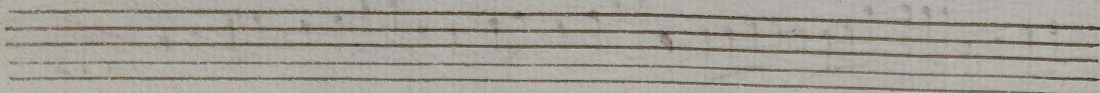
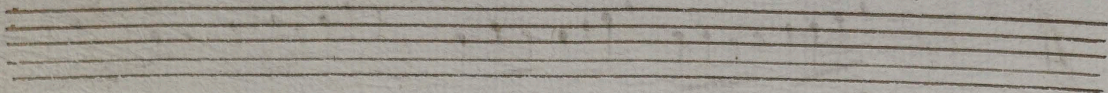


*Coroce purgate*



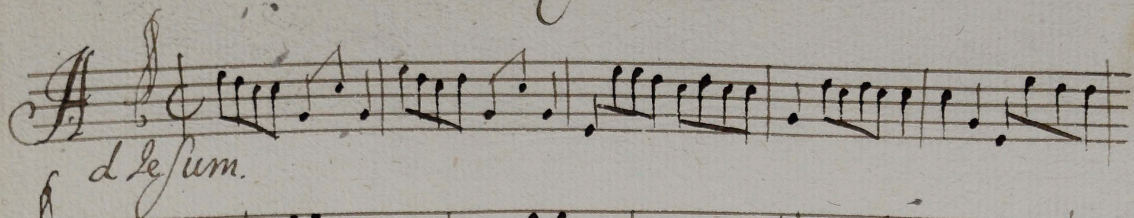
*Alleluia*



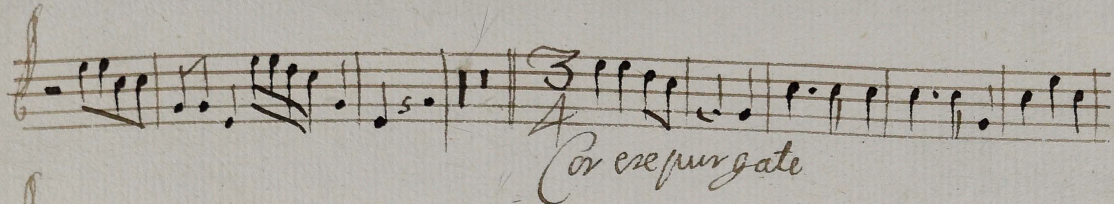
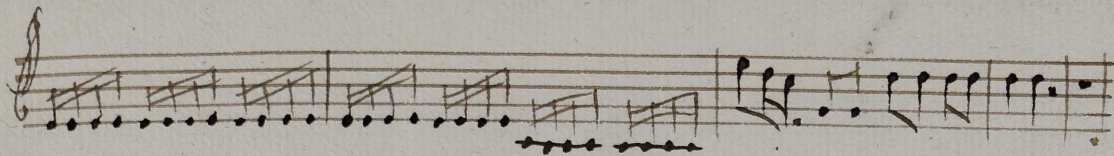
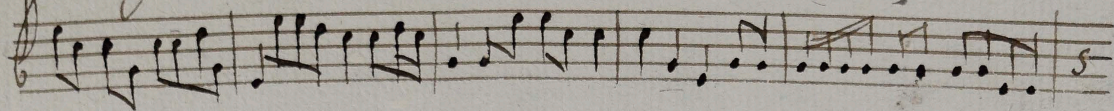


Clavino Edo.

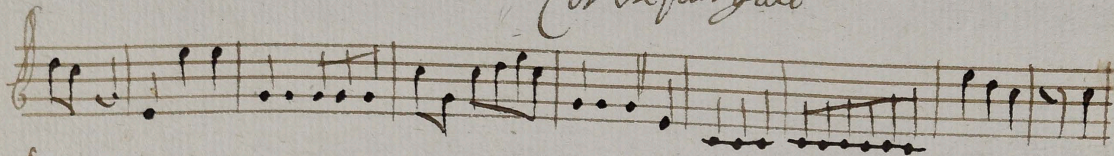
*A*



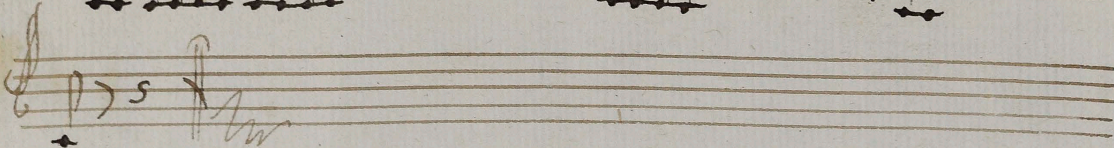
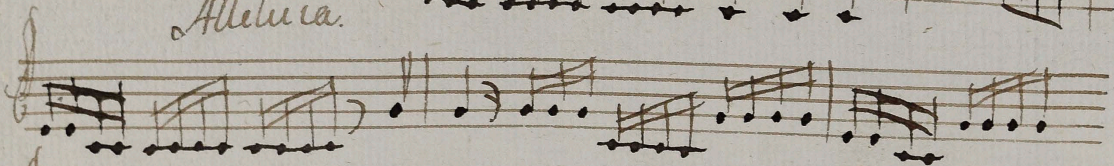
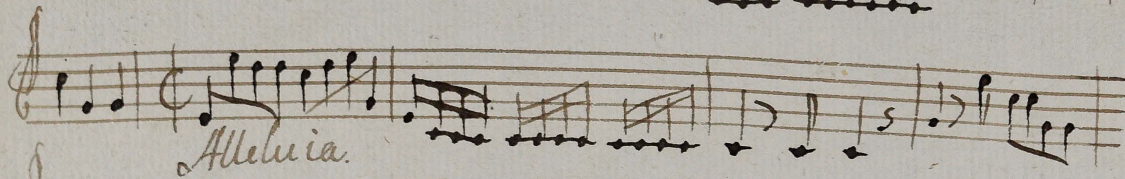
*d'lesum.*



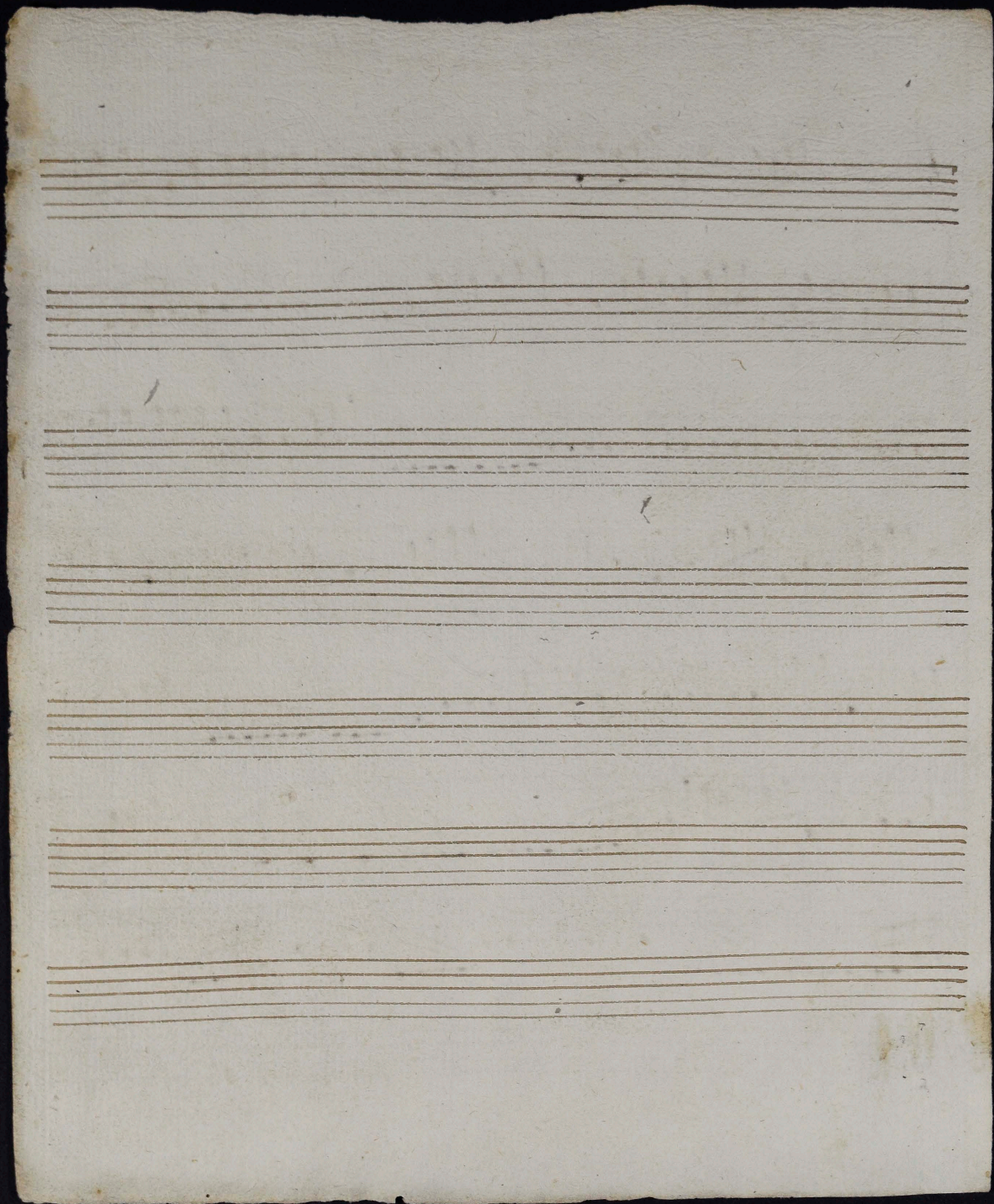
*Cor exepurgate*



*Alleluia.*









Handwritten musical score on three staves. The notation includes various notes, rests, and chord markings. The first staff begins with a treble clef and a common time signature. Above the first four measures are chord markings: 6, 6, 6, 6. The second staff continues the melody and includes a section marked "Allegria" with a 6/8 time signature and a 43 measure count. Above the first four measures of the second staff are chord markings: 6, 6, 6, 6. The third staff continues the piece and includes a section marked "Allegria" with a 6/8 time signature and a 43 measure count. Above the first four measures of the third staff are chord markings: 6, 6/3, 6, 6/3 43. The piece concludes with a double bar line and a fermata.

Seven empty musical staves, each consisting of five horizontal lines, arranged vertically on the page.

