

Aria de Tempore  
Amor mi Iesu Chare.  
à Solo Alto  
Con 2. Violini  
e Organo.

Celesia Rehl' Ravennisi Sacrum  
Raptori e Sacri legum.



Andante.

Alto Solo

mor Amor mi Jesu chare Jesu cha -  
re mi Jesu cha re ad  
De ad De Corde us pi - ro veni o ptata spes. Amor  
mi Jesu chare Jesu chare ad De ad De Cor de us  
pi - ro Ad De us pi  
ro ad De us pi ro veni  
veni o ptata spes. Amantem conso la re  
qui solum De re qui ro Amantem conso la re qui

*Solum De re quiro qui solum De re quiro ah veni ubi  
es amantem conso lare qui solum De re quiro qui  
Solum De re quiro ah veni ubi es.*

*Da Capo  
Ad Signu.*

The image shows a handwritten musical score on aged paper. It consists of three staves of music, each with a treble clef and a key signature of one sharp (F#). The lyrics are written in a cursive hand below the notes. The first staff begins with a treble clef and a sharp sign. The second staff continues the melody. The third staff concludes with a double bar line and a sharp sign. To the right of the third staff, the words "Da Capo" and "Ad Signu." are written in a larger, more decorative hand. Below the three staves, there are seven empty staves, suggesting a continuation of the piece or a separate section.

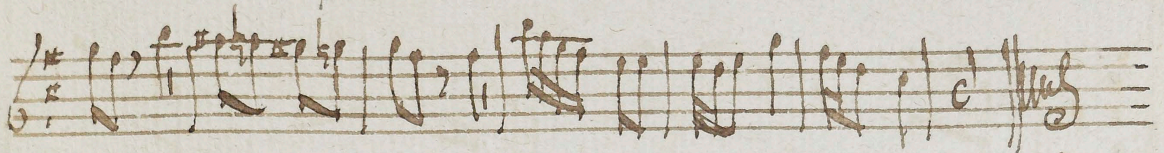
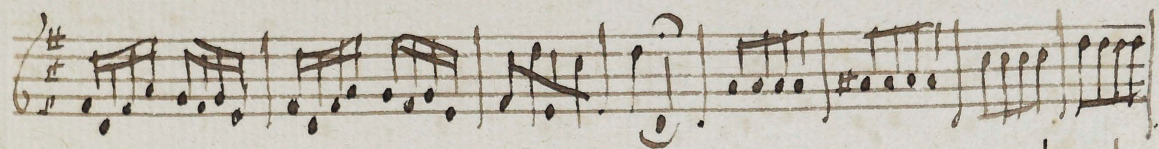
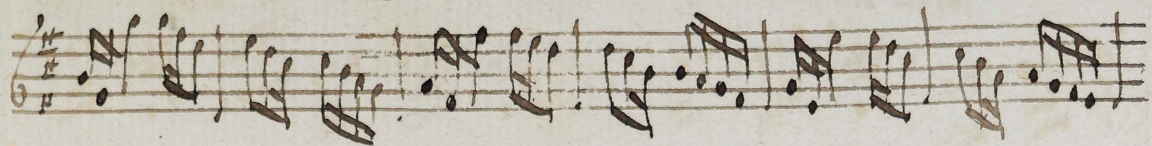
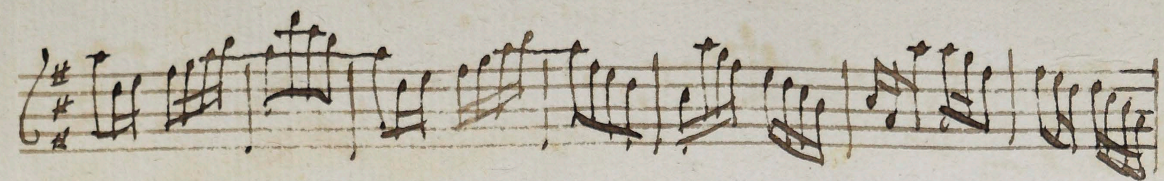
*Adm d m*

Violino I. mo.

*A*  $\frac{2}{4}$

*mor mi Jesu en arc*

certe



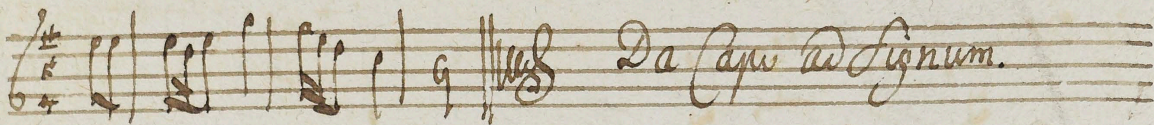
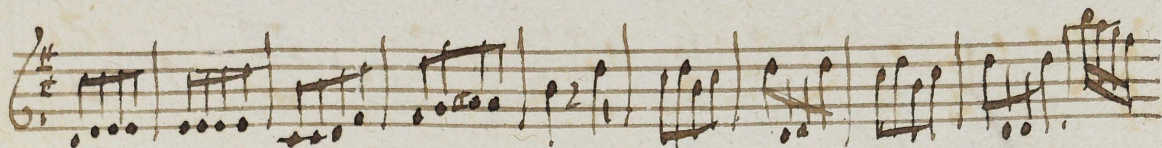
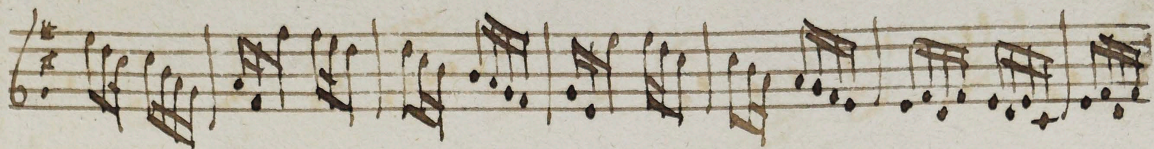
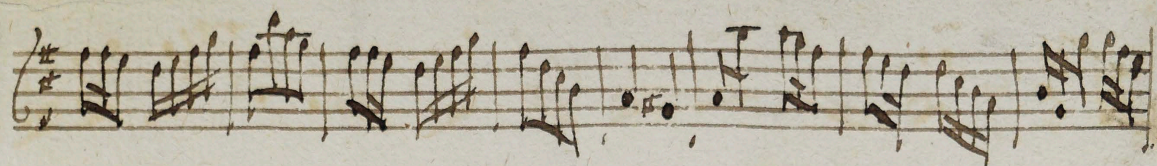
*Da Capo ad Signum.*



Violino Solo

*Allegro*  
2/4  
4  
mor mi

ante



admsm

Organo

*A*  $\text{2/4}$   $\text{4}$  *in or mi Jeſu.*

*cresc.*



*Da Capo ad Sig. rimo*

Ad ma 2<sup>a</sup>

