



Concerto de B.M.V.
Cordis amor inflammare.
à l'alto Solo
Con. 2 Violini
e Organo.

Celesia Parochiali Rauring Sacrum.
Raptori Saenlegium.

Quae

Canto Solo.

G# C#

cordis amor inflammare Cordis amor inflam

mare Matrem Dei venerare concen tu affectuum

Cultu plenu Rituum Cordis amor inflammare Cordis a

mor inflammare Matrem Dei Matrem Dei venerare

Virgo casta Mater pia vera mundi vera mundi vera

mundi spes Maria Virgo casta Mater pia Virgo

casta Mater pia Virgo casta Mater pia vera mundi spes

Manu Angelorum Dominas.

12

altr. staccato. Tibi plausus Tibi to ni Tibi Cantus

Sibi Do - - ni Sibi plausus Sibi Do
ni Sibi Cantus Sibi Do ni Sibi Cantus tibi Do - -
plausus Sibi to - - ni Sibi Cantus Sibi Do - - ni
Cordis mure lamina Cordis mure lamina. Sibi
plausus Sibi to - - ni Sibi Can - - tus Sibi Do - -
ni Cordis mure lamina Cordis mure lamina.
Sibi plausus Sibi Do - - ni Sibi Cantus Sibi Do ni Cordis mure la -
mina

Admodum

1

A handwritten musical score consisting of seven staves. The notation is in a system with a treble clef and a key signature of one sharp (F#). The music is written in a style characteristic of the 18th or 19th century, featuring a variety of note values, rests, and dynamic markings. The first staff begins with a fermata over a whole note. The notation includes many beamed notes, suggesting a rhythmic or melodic pattern. The piece concludes with a double bar line and a decorative flourish.

Adm. D. m.

Vivino Amore

Handwritten musical notation on a five-line staff, treble clef, G major key signature, common time signature. The music consists of a series of eighth and sixteenth notes, some beamed together.

cordis amor

Handwritten musical notation on a five-line staff, bass clef, G major key signature, common time signature. The music consists of a series of eighth and sixteenth notes, some beamed together.

Handwritten musical notation on a five-line staff, treble clef, G major key signature, common time signature. The music consists of a series of eighth and sixteenth notes, some beamed together.

pianis.

Handwritten musical notation on a five-line staff, bass clef, G major key signature, common time signature. The music consists of a series of eighth and sixteenth notes, some beamed together.

Handwritten musical notation on a five-line staff, treble clef, G major key signature, common time signature. The music consists of a series of eighth and sixteenth notes, some beamed together.

Handwritten musical notation on a five-line staff, bass clef, G major key signature, common time signature. The music consists of a series of eighth and sixteenth notes, some beamed together.

Handwritten musical notation on a five-line staff, treble clef, G major key signature, common time signature. The music consists of a series of eighth and sixteenth notes, some beamed together.

Handwritten musical notation on a five-line staff, bass clef, G major key signature, common time signature. The music consists of a series of eighth and sixteenth notes, some beamed together.

Handwritten musical notation on a five-line staff, bass clef, G major key signature, common time signature. The music consists of a few notes, including a 're' note.

A handwritten musical score consisting of eight staves. The notation is in a single system, likely for a piano. The key signature is one sharp (F#), and the time signature is 6/8. The music features a variety of rhythmic patterns, including eighth and sixteenth notes, and rests. There are two dynamic markings: "piano" written in the second staff and "piano" written in the sixth staff. The handwriting is in dark ink on aged, slightly yellowed paper.

arte

allegro

A handwritten musical score consisting of eight staves. The notation is in a single system, with each staff containing a pair of treble and bass clefs. The music is written in a style characteristic of the 18th or 19th century, featuring a variety of note values, rests, and dynamic markings. The first staff begins with a treble clef, a key signature of one sharp (F#), and a time signature of 2/2. The notation includes many sixteenth and thirty-second notes, often beamed together. There are several measures with rests, and some measures contain complex rhythmic patterns. The paper is aged and shows some staining, particularly in the lower right quadrant.

Violino solo.

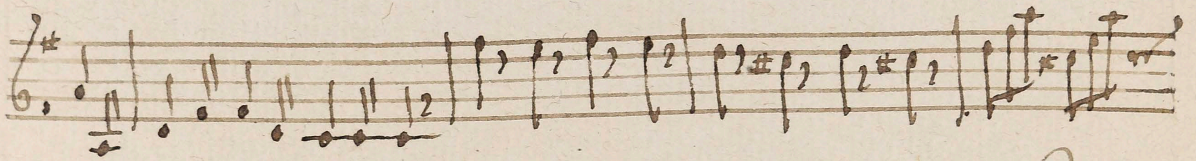
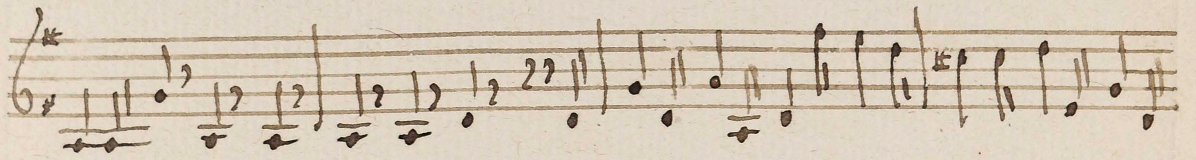
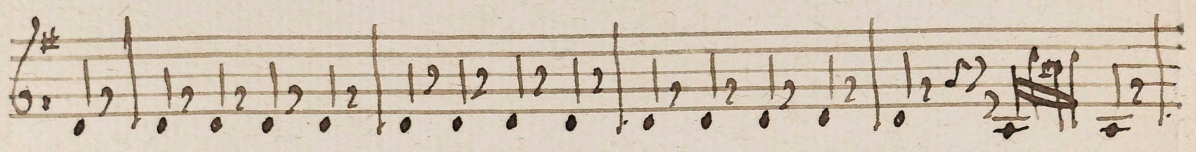
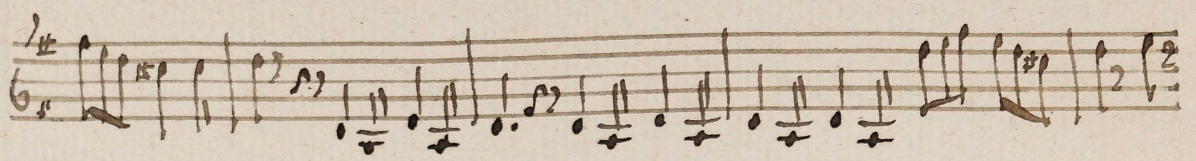
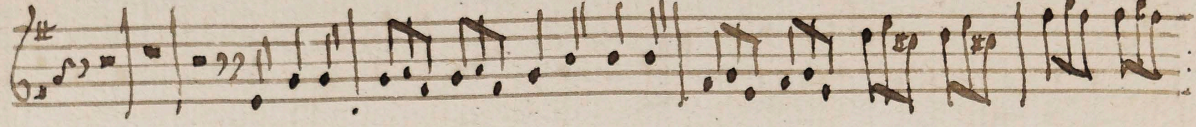
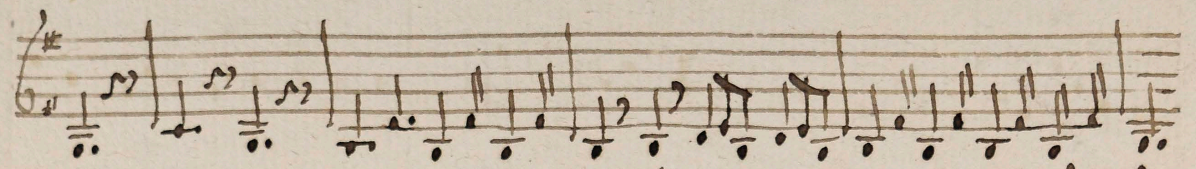
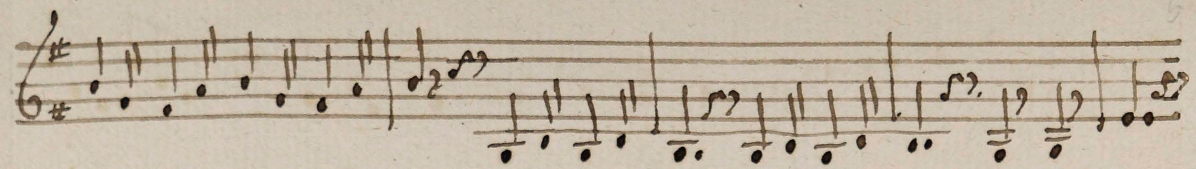
ordis amor

pianissimo

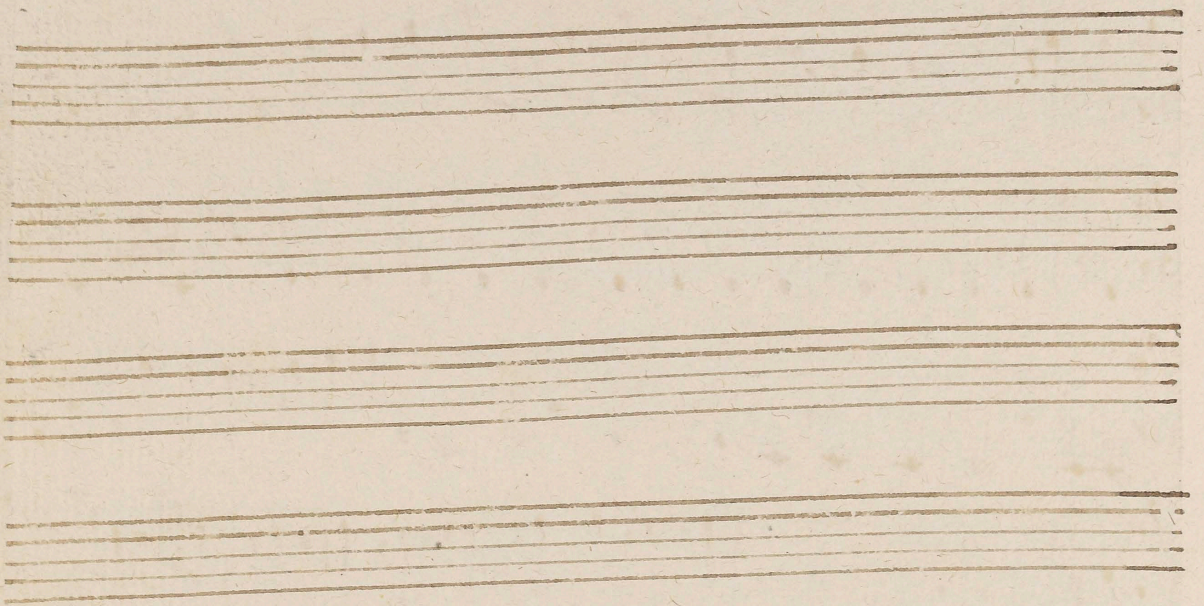
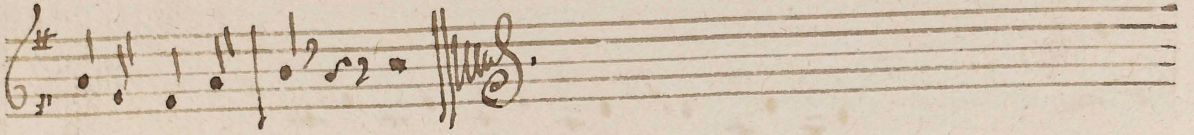
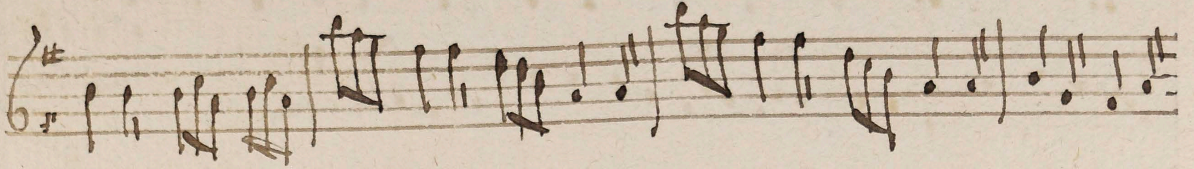
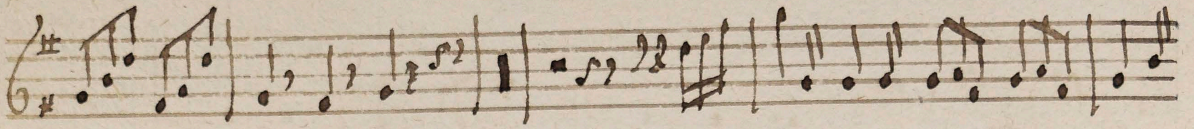
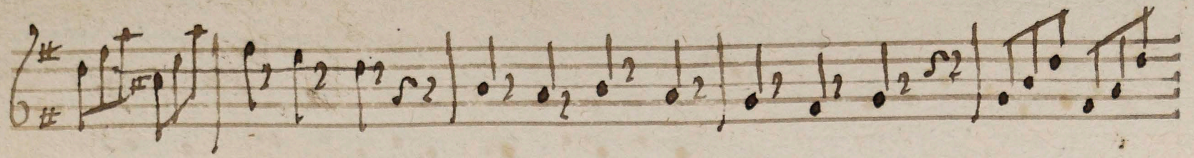
The image shows a page of handwritten musical notation for a violin solo. It consists of eight staves of music. The first staff begins with a treble clef, a key signature of one sharp (F#), and a common time signature (C). The music is written in a cursive, handwritten style. The first staff has the annotation "ordis amor" written below it. The third staff has the annotation "pianissimo" written above it. The notation includes various rhythmic values, including eighth and sixteenth notes, and rests. The piece concludes with a double bar line at the end of the eighth staff.

Alto

A handwritten musical score consisting of eight staves. The notation is in a system with a treble clef and a key signature of one sharp (F#). The music is written in a style characteristic of the 18th or 19th century, featuring a variety of note values, rests, and dynamic markings. The first staff begins with a treble clef and a key signature of one sharp. The second staff contains a dynamic marking of *p*. The third staff contains a dynamic marking of *pp*. The fourth staff contains a dynamic marking of *pianis.*. The fifth staff contains a dynamic marking of *p*. The sixth staff contains a dynamic marking of *pp*. The seventh staff contains a dynamic marking of *p*. The eighth staff contains a dynamic marking of *pp*. The music is written in a system with a treble clef and a key signature of one sharp. The notation is in a style characteristic of the 18th or 19th century, featuring a variety of note values, rests, and dynamic markings. The first staff begins with a treble clef and a key signature of one sharp. The second staff contains a dynamic marking of *p*. The third staff contains a dynamic marking of *pp*. The fourth staff contains a dynamic marking of *pianis.*. The fifth staff contains a dynamic marking of *p*. The sixth staff contains a dynamic marking of *pp*. The seventh staff contains a dynamic marking of *p*. The eighth staff contains a dynamic marking of *pp*.



Cito



Organo.

ordis amor

The image shows a handwritten musical score for organ, consisting of ten staves of music. The key signature is G major (one sharp) and the time signature is 3/4. The first staff begins with the title "Organo." and the first line of the piece is labeled "ordis amor". The music is written in a single system, with each staff containing a line of music. The notation includes various note values, rests, accidentals (sharps and naturals), and ornaments (question marks). The piece concludes with a double bar line and repeat dots at the end of the tenth staff.

A handwritten musical score consisting of ten staves. The notation is in a single system, likely for a single melodic line. The key signature is one sharp (F#), and the time signature is 2/2. The score begins with a treble clef and a key signature of one sharp. The first staff contains a double bar line with a repeat sign and the number '12' above it. The notation includes various note values, rests, and accidentals (sharps). The piece concludes with a double bar line and a fermata over the final note.

ante

