



Gloria in altissimis Deo  
Pro nocte natiuitatis Dni I Nati

a.  
Canto Alto Tenore Basso  
Con 2. Violini  
e Basso pro Organo.

Edesio Parochiali Lauensis. Reuon.  
Laptoni Sacilegiums.



Canto

lo - ria in altis - simis De - o in altis -  
simis De - o Glo - ria in altis - simis De - o  
Glo - ria in altis - simis De - o.  
Glo - ria in altis - simis De  
o Parturigo in - ter - ni - ta - tis et  
Auchaycie Porruccie in - ter - ni -  
aspice - nie. Haec - ce - re - no - va.  
do bethleem aspice - nie. Haec - ce - re - no - va.



Wiedlu Amie miezle ay cie Naro dzonego naro dzonego


Idzie pi ciela Tut ay cie. *Przy*

Kam pie do tej Starej Idzie cie bo gu dzie lei Przed A

um Wcielonym Panu narodzonym nie ho na Ziemi ja

day cie Glo - ria in albis

simis De o

*Armo Dim*  




Alto

loria a co sa truga?

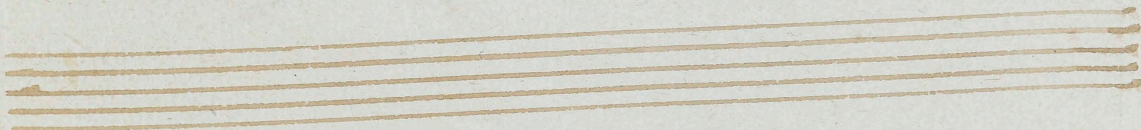
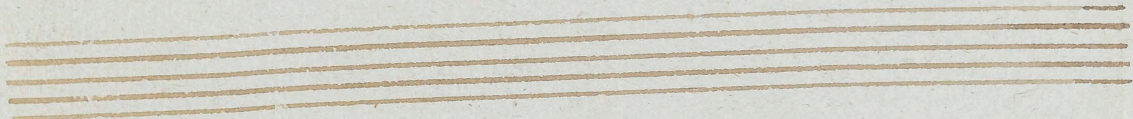
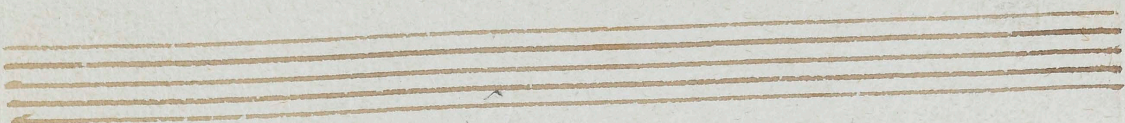
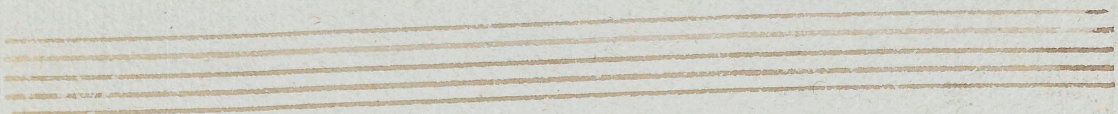
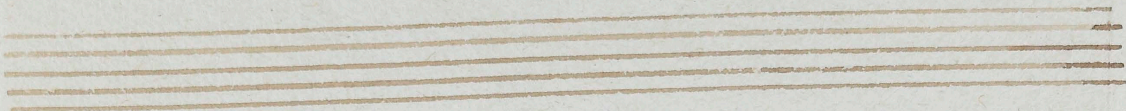
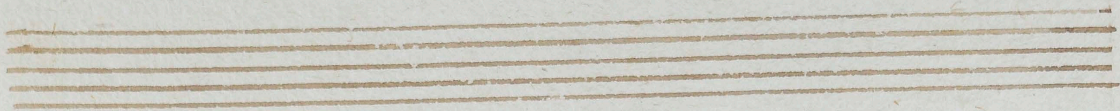
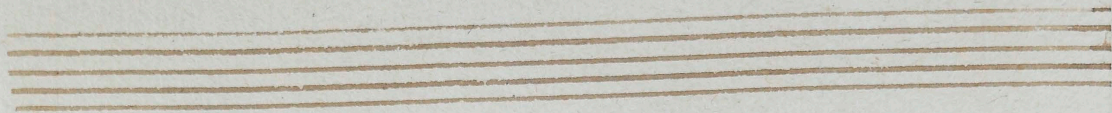
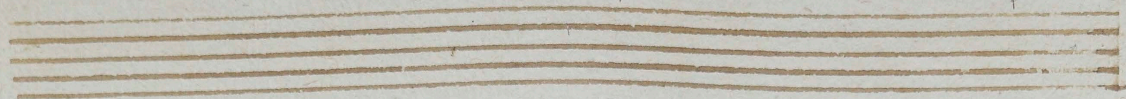
In te ro Mi chae

nie wymuic wcale

Glo - na in altis simo De - o

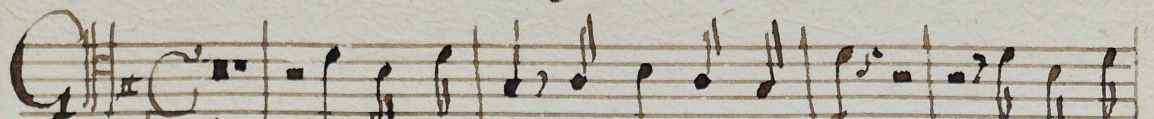
Adm. Str.

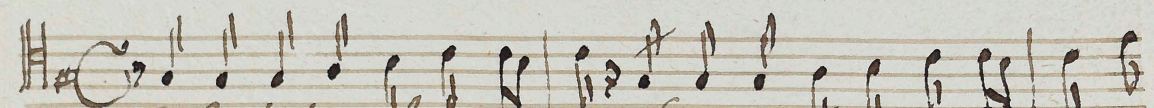






Tenore


  
 lona Hey Styr Bartoz aco to la glos Stachayie  
 Bracia glosu Arjel sluzgo Co' wy spiewacie pranie niere  
 sluzgo a chwalic Pana Bogaw.


  
 Treba stuchai glosu tego a bawriy stona Anoziego y  
 braci'ne wnozy weselem bielic' pzed do Bethle em bie  
 zci pzed do Bethle em do Bethle em.  
 Kuba raty cum Piana a brzymy do tego Pana.



Ogle dny my Boshie dnie to ktore sie via dno to  
Hlasny Boga w ludzkimiele Przystampny do niego smie  
le a Gody go pawi ta my Jemu casie y chwate, a  
Lamy, kwlem go wyznamy y ue do to Caspie  
wa - - - my Do - - - na in altis  
Amis Deo.

Amis Deo.



Basso.

lonia. *Requiesce nos Gody hocha mor*

*Lemni suzici radostie niemi Ustanimy w dylscy nie bogomy*

*se ara przedko do uimny sie Ze noc iasnie ie to sie*

to dzieie. *Stem glos Anjelski znaczy*

*chybasam drug wiechnie racy.*

*to uiz ro umiemny ze Mepya az na zie mi.*

*To znacza arido ke emieba uirlyc temu tne*

*na in altissimi de - o.*

*na in altissimi de - o.*

*Adm. G.*



Blank musical staff with five horizontal lines.

Blank musical staff with five horizontal lines.

Blank musical staff with five horizontal lines.

Blank musical staff with five horizontal lines.

Blank musical staff with five horizontal lines.

Blank musical staff with five horizontal lines.

Blank musical staff with five horizontal lines.

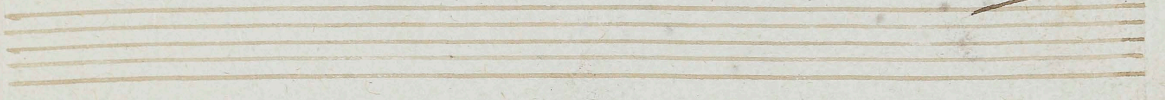
Blank musical staff with five horizontal lines.



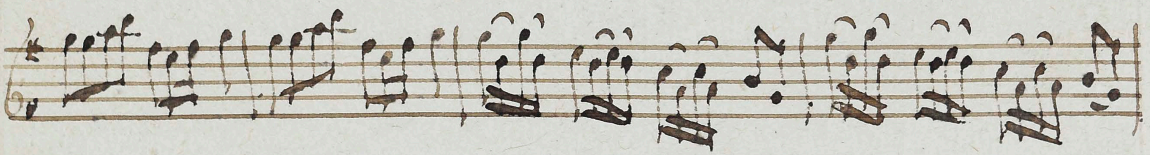
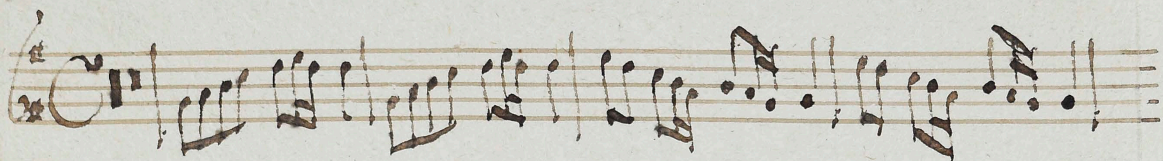
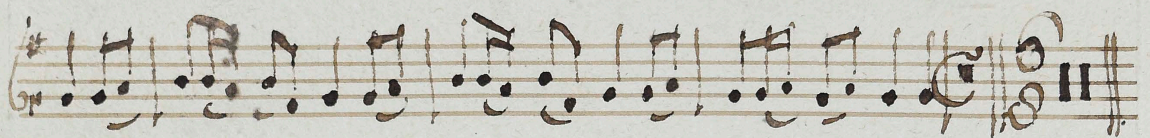
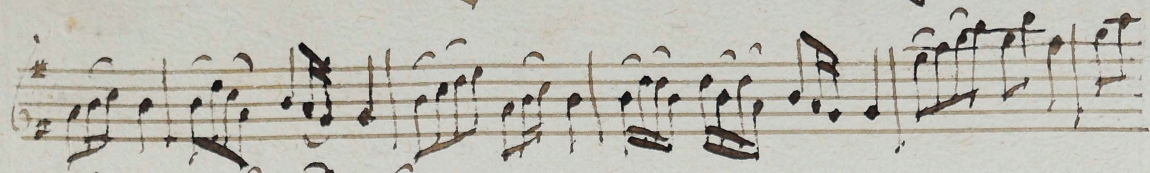
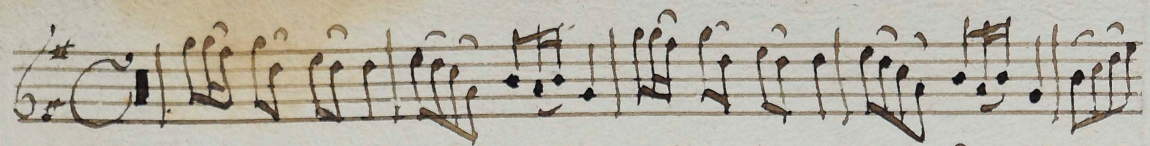
Violino Solo.

*Gloria.*

*verte.*







*Adagio*

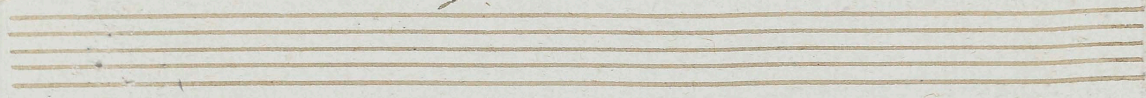




Violino Solo

*luna*

*aerte*





A page of handwritten musical notation on eight staves. The notation is in a historical style, likely from the 17th or 18th century. The first staff begins with a treble clef, a key signature of one sharp (F#), and a common time signature (C). The music consists of various note values, including minims, crotchets, and quavers, often beamed together. There are several repeat signs (double bar lines with dots) and a double bar line with a fermata-like flourish at the end of the eighth staff. The paper is aged and shows some staining.

*Adm. Ste.*



Organo

Andante  
Musical notation on a grand staff (treble and bass clefs) with a key signature of one sharp (F#). The music begins with a large 'C' time signature for common time. The tempo 'Andante' is written above the staff.

Allegro  
Musical notation on a grand staff. The tempo 'Allegro' is written above the staff. The music features more complex rhythmic patterns and some trills.

Allegro  
Musical notation on a grand staff. The tempo 'Allegro' is written above the staff. This section continues with intricate melodic lines.

Adagio  
Musical notation on a grand staff. The tempo 'Adagio' is written above the staff. The music slows down and features more sustained notes.

Allegro  
Musical notation on a grand staff. The tempo 'Allegro' is written above the staff. The music returns to a faster pace.

Allegro  
Musical notation on a grand staff. The tempo 'Allegro' is written above the staff. This section includes some trills and rapid passages.

Allegro  
Musical notation on a grand staff. The tempo 'Allegro' is written above the staff. The music continues with complex rhythmic figures.

Allegro  
Musical notation on a grand staff. The tempo 'Allegro' is written above the staff. This section features many trills and fast-moving lines.

Allegro  
Musical notation on a grand staff. The tempo 'Allegro' is written above the staff. The music maintains its fast and intricate character.

Allegro  
Musical notation on a grand staff. The tempo 'Allegro' is written above the staff. The piece concludes with a final flourish. The word 'deX' is written at the beginning of the staff.



Handwritten musical notation on a single staff, featuring a treble clef, a key signature of one sharp (F#), and a series of eighth and sixteenth notes with various rests.

Handwritten musical notation on a single staff, continuing the piece with a treble clef, a key signature of one sharp, and a mix of note values including eighth and sixteenth notes.

Handwritten musical notation on a single staff, featuring a treble clef, a key signature of one sharp, and a section with many beamed sixteenth notes.

Handwritten musical notation on a single staff, featuring a treble clef, a key signature of one sharp, and a section with many beamed sixteenth notes.

Handwritten musical notation on a single staff, featuring a treble clef, a key signature of one sharp, and a section with many beamed sixteenth notes. The word *Andante* is written below the staff.

Handwritten musical notation on a single staff, featuring a treble clef, a key signature of one sharp, and a section with many beamed sixteenth notes.

Handwritten musical notation on a single staff, featuring a treble clef, a key signature of one sharp, and a section with many beamed sixteenth notes.

Handwritten musical notation on a single staff, featuring a treble clef, a key signature of one sharp, and a section with many beamed sixteenth notes.

Handwritten musical notation on a single staff, featuring a treble clef, a key signature of one sharp, and a section with many beamed sixteenth notes.

Handwritten musical notation on a single staff, featuring a treble clef, a key signature of one sharp, and a section with many beamed sixteenth notes. The word *Allegro* is written above the staff.

de



