

esd

Motetto

Hæc est Virgo sapiens.

^{a g}
Canto Alto Tenore Basso

2. Viol.

2. Clarin.

Con Organo.

Ecclesie Publi. Ratiſbonenſis Sacrum
Raptori Sacilegium.

adagio Solo

Canto

1

adagio Solo Canto

adagio Solo. Hæc est quam Dominus hæc est quæ Domi
nus vigi lan tem in re nit Hæc est quæ Dominus
vigi lan tem in re nit.
Solo. Veni e lecta mea Veni veni e
lecta mea e lecta mea Veni veni e
lecta mea Veni ve
ni e lecta mea Veni ve
ni e lecta mea

et ponam in te thronum in te thronum meum et ponam

in te thronum in te thronum meum in eter num.

Veni Veni electa mea Veni veni e

lecta mea. Veni veni

electa mea. in te thronum meum ponam in te in te thronum

meum. in te thronum ponam in te thronum

meum. Veni Veni Electa mea et po - nam

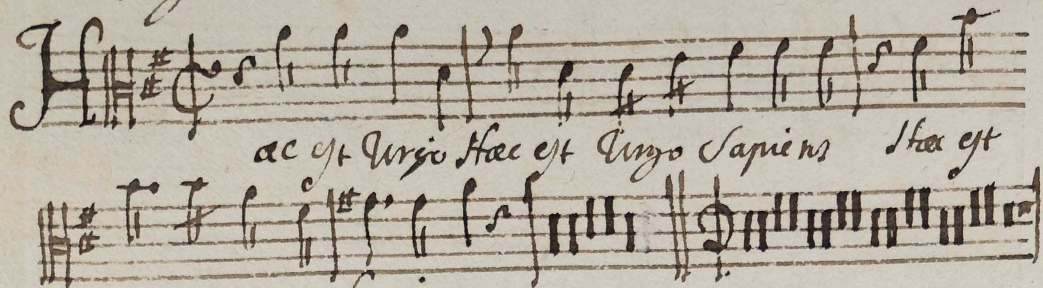
ponam in te thronum meum in eter - num.

Admodum

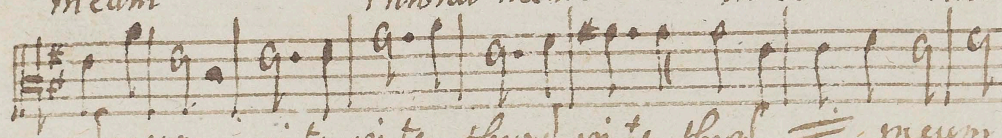
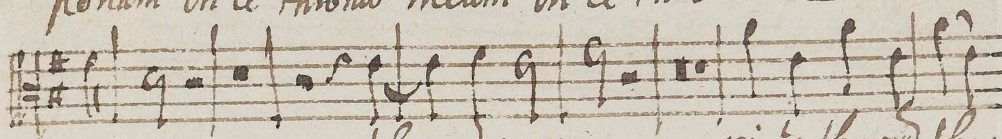
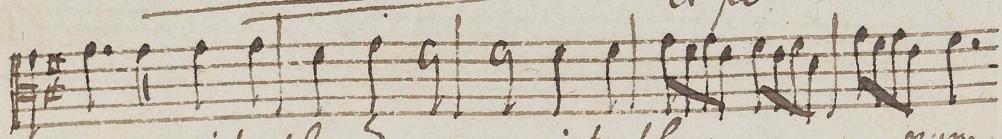
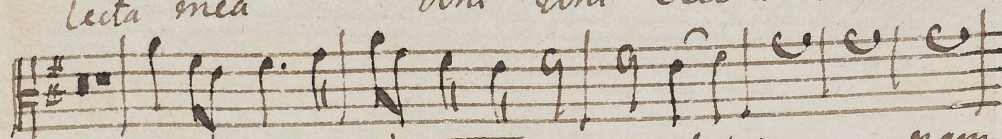
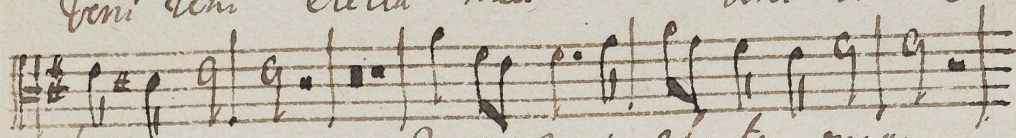
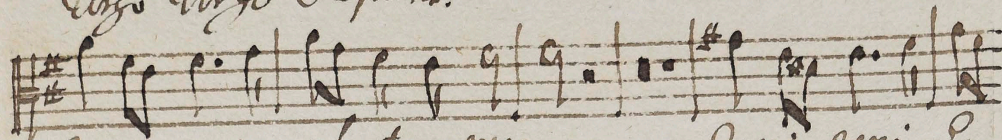
Adagio Solo.

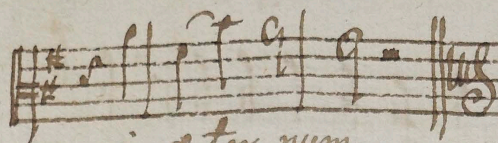
Alto.

2



Virgo Virgo Sapientis.





in aeternum.

Adm. Gm.

adagio solo.

Tenore

5

et ex. hys. Una de numen prudentum de -
numen de - numen et una de
numen et una de numen pruden -
tum pruden tum.
Veni Veni Electa mea Veni electa me
a Veni electa mea Veni Veni ele
cta mea peram in te thymum meum peram
in te thymum meum peram in te thymum

in te thronus meus in te thronus meus
um in te ponam thronus meus Veni e
lecta mea et ponam in te thronus
num thronus meum in de ternum Amen

The image shows a handwritten musical score on four staves. The notation is in a historical style, likely from the 18th or 19th century. The key signature is one sharp (F#), and the time signature is common time (C). The lyrics are in Latin and are written below the notes. The first staff ends with a double bar line and a repeat sign. The second staff ends with a double bar line and a repeat sign. The third staff ends with a double bar line and a repeat sign. The fourth staff ends with a double bar line and a repeat sign. The lyrics are: 'in te thronus meus in te thronus meus', 'um in te ponam thronus meus Veni e', 'lecta mea et ponam in te thronus', and 'num thronus meum in de ternum Amen'.

Basso.

4

accepta haec est uirgo sapiens haec est
 uirgo uirgo sapiens.
 Veni electa mea Veni Veni Electa mea
 Veni Veni electa mea Veni electa me
 a Veni electa mea
 Et pro nam et peram in te thronus me um.
 in te thro - - - nus meum in te thronum me
 um Veni Veni Electa mea. in te thronum

one um. pona in te thronu one um in

ternum.

Adm. Sm.

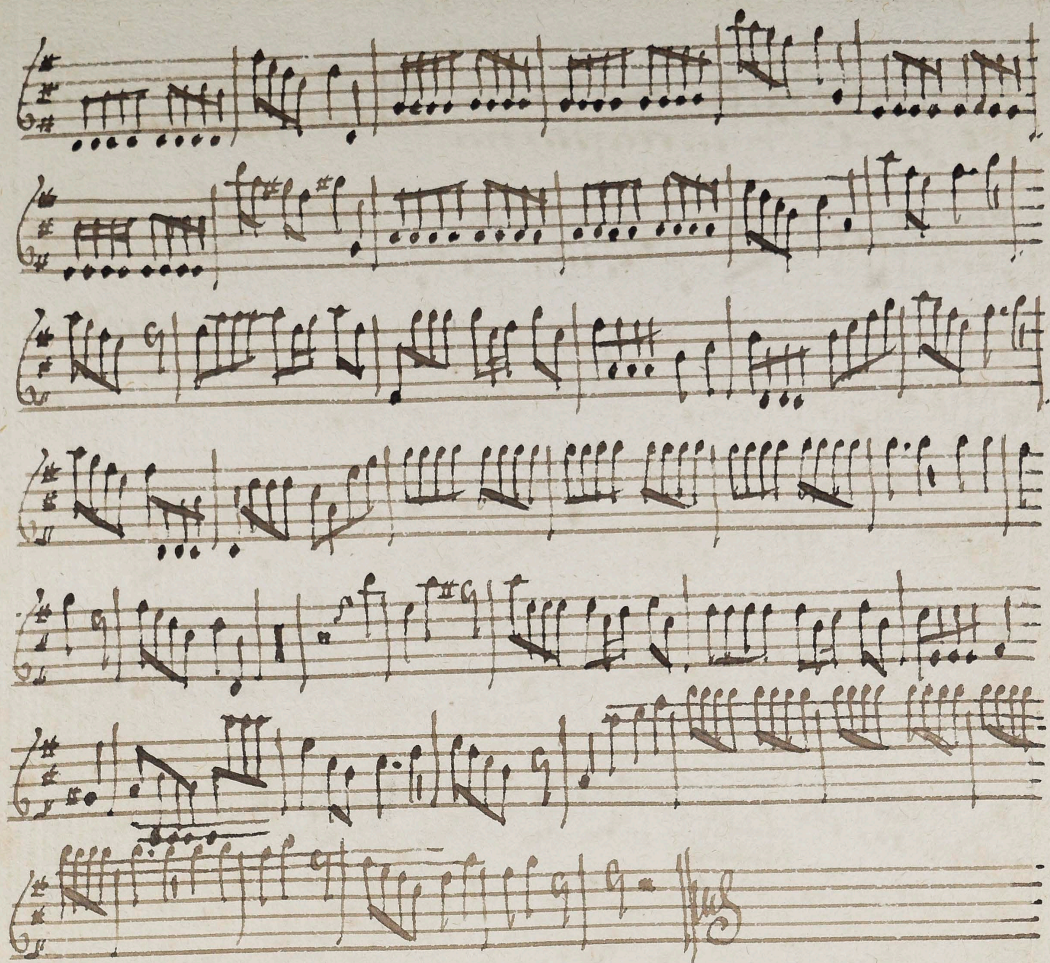
Violino Amo.

5

Facet.
Ami c'ela.

p
p
p
p
p
p
p
p
p
p

Cito

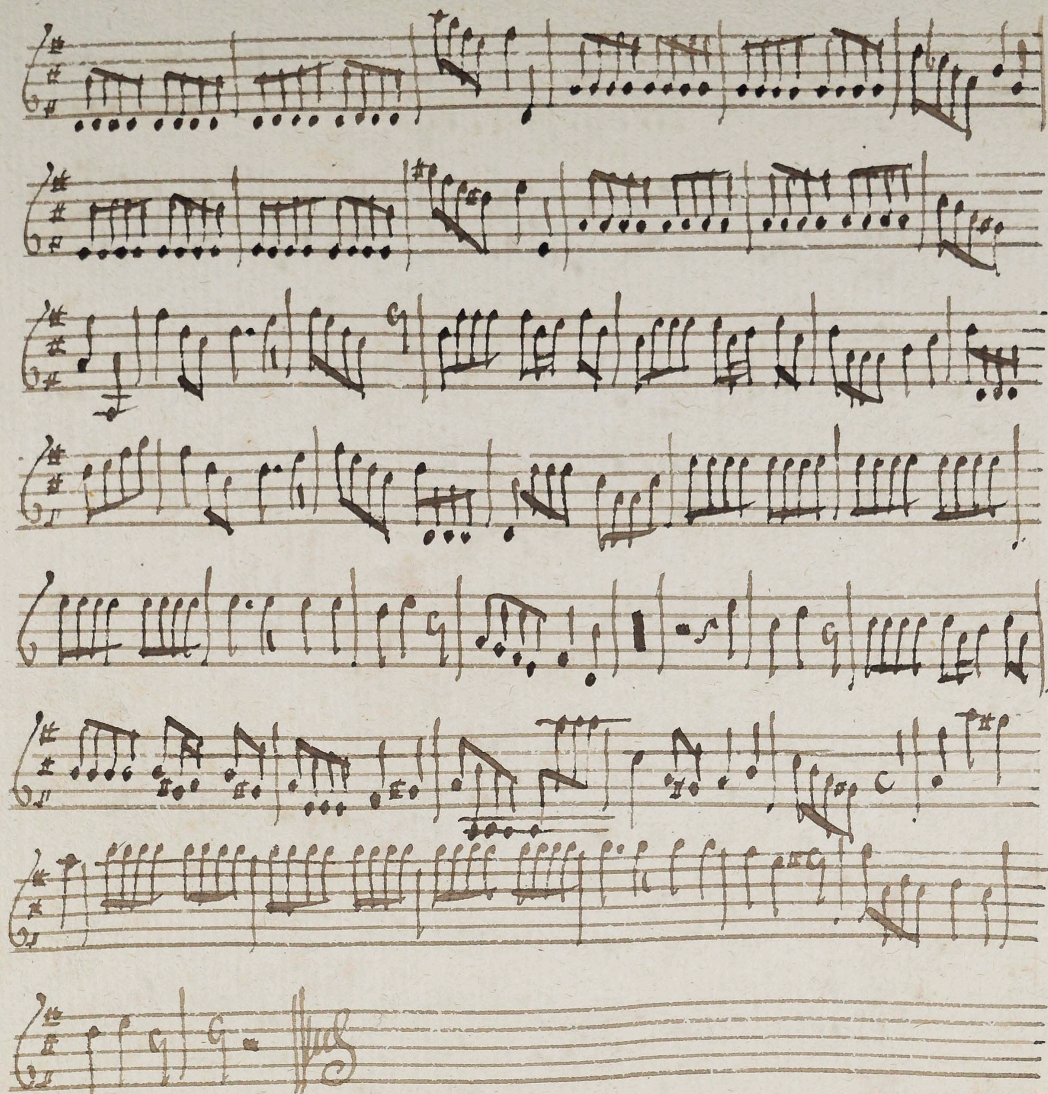


Violino solo.

6

Allegro
Tacet.
Veni electa.

Cito

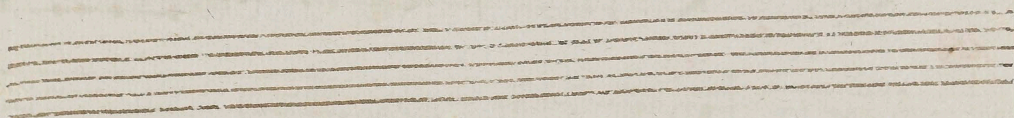
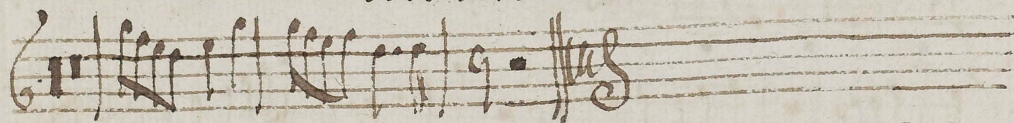
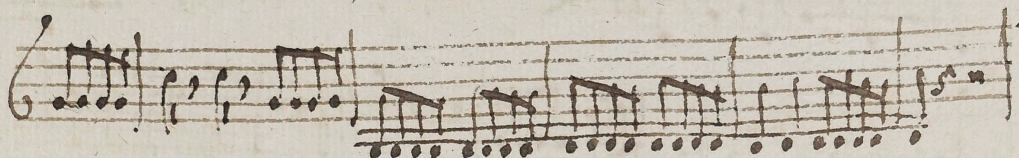
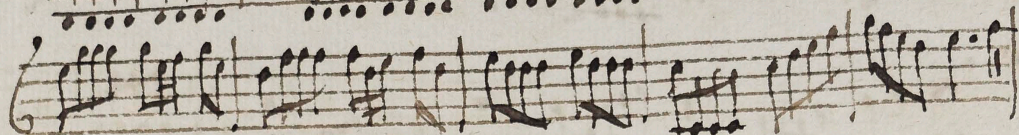


Litus. Mo ex D.

47

Haege
Gael.
ani e lita

ante

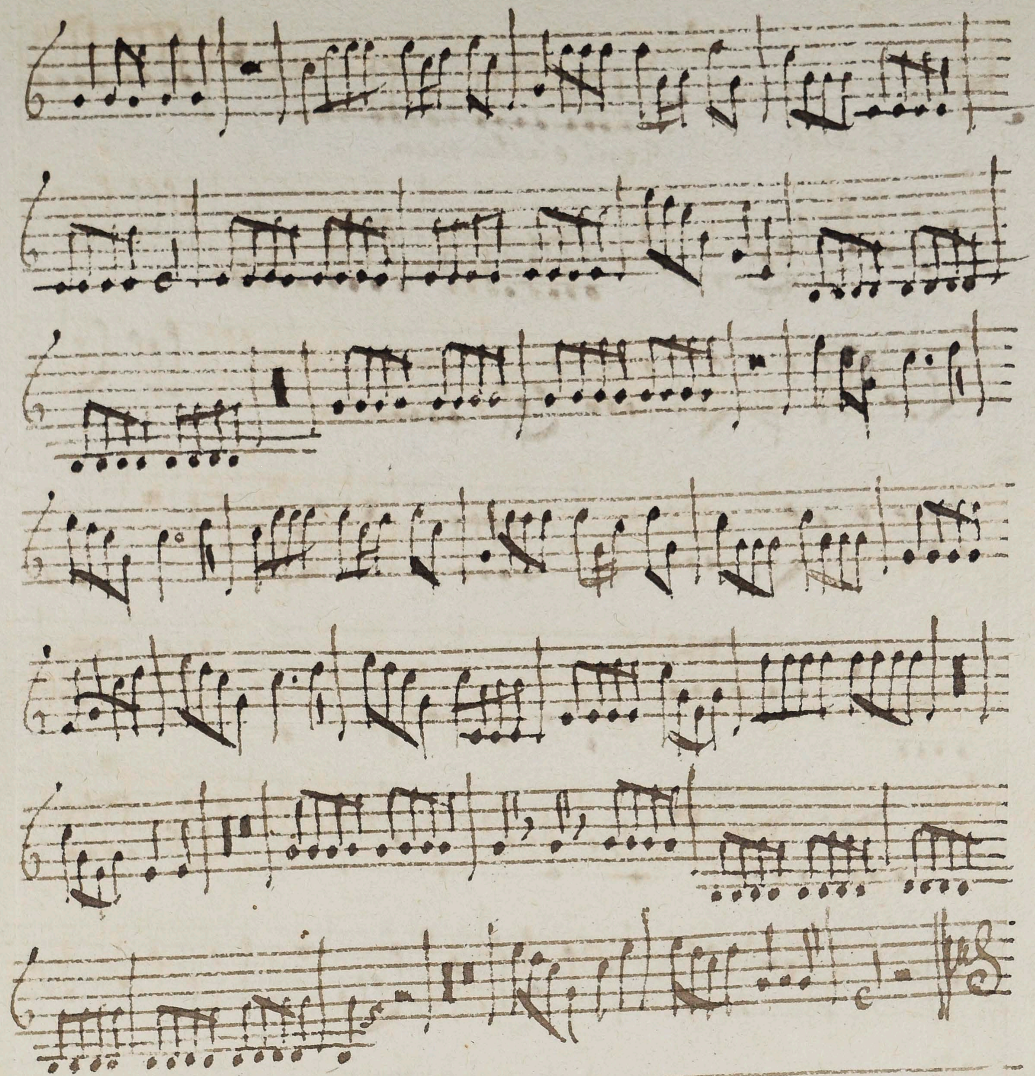


Lituo 2d.

8

Hae et virgo
Taut.
Veni electa mea.

Acute



Adagio

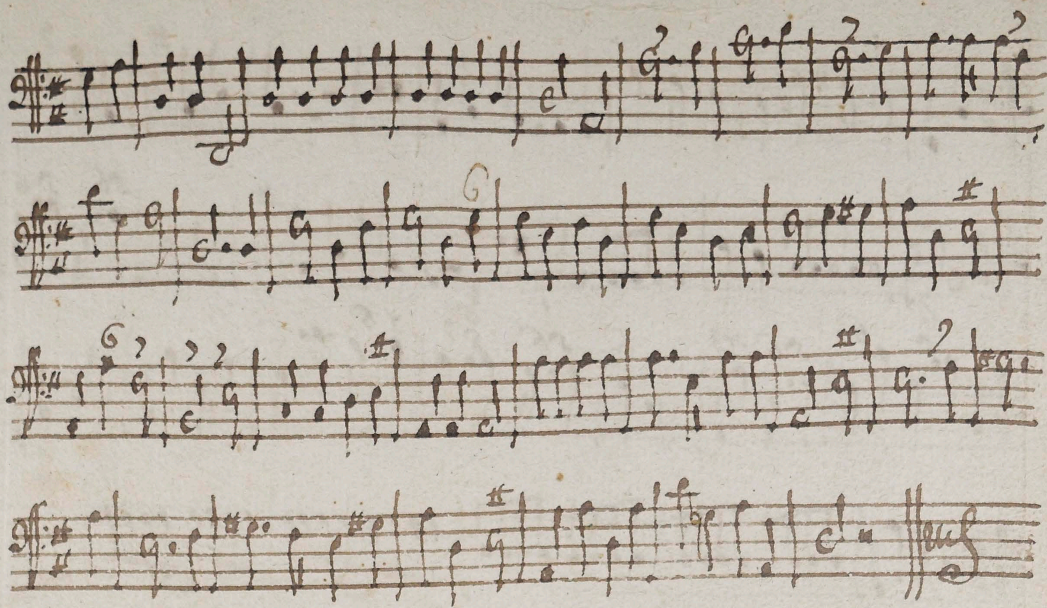
Organo

Handwritten musical score for Organ, featuring multiple staves with notes, rests, and figured bass notation. The score includes the title "Adagio" and "Organo". The music is written in G major (one sharp) and common time. The first staff begins with a treble clef and a key signature of one sharp. The second staff contains the text "de est Organo Sapientis" written below the notes. The score includes various musical notations such as notes, rests, and figured bass (e.g., 6s, 43, 66, 36, 43, 6, 2, 2, 2, 6). The word "Solo." is written below the fourth staff. The manuscript is on aged paper with some staining and wear.

A handwritten musical score on eight staves. The notation is in a single system, likely for a string quartet or similar ensemble. The key signature is one sharp (F#), and the time signature is 6/8. The score features a variety of rhythmic patterns, including eighth and sixteenth notes, as well as rests. There are several dynamic markings, including 'f' (forte) and 'p' (piano). The notation is written in a cursive, handwritten style. The staves are numbered 1 through 8. The first staff begins with a treble clef and a key signature of one sharp. The second staff begins with a treble clef and a key signature of one sharp. The third staff begins with a treble clef and a key signature of one sharp. The fourth staff begins with a treble clef and a key signature of one sharp. The fifth staff begins with a treble clef and a key signature of one sharp. The sixth staff begins with a treble clef and a key signature of one sharp. The seventh staff begins with a treble clef and a key signature of one sharp. The eighth staff begins with a treble clef and a key signature of one sharp. The score concludes with a double bar line and a fermata.

Tutti.

Al fine



adms L.