

Aria de BVM.
Salve Virgo benedicta
a Santo solo
Con 2. Violini
Alto Viola
e Organo.

Ecclesiæ Publ. Lawrencei Sacrum
Bapt. Sacilegium.



Canto Solo.

alve argo argo bene dicta Sal-
ce argo argo bene dicta. plena dei gra-
tia. Christi Mater spes et. Vita nostra pa-
tro-
pro-
pax et glo- ria. Clemen- audi. Tu ce lau-
di nunc in tentos aspi ce. Fili orum deo tu-
num. Corda vota Tu dei pe. Vita forma mo-
rum Norma Tu The Lau nus gra- ti de-
Dei
Templum et exemplum candidie Tu. Titul. Gemma decora

rosa ruens capitate liliem. puritatis
graciam. Sancti tate pre di tum Tu in nobis fac
renasce Spi ri tum Fac am are quem gestasti
pectoris sub gremio fac laudare quem lactasti ube
re Virgineo Semi tutis ut sincerum fac reddamus
delitum tandem bona acta functos duc ad Celi gaudi
um. Da Caput ad Signu.

Adm B^o

Violino I^{mo}

Allegro.

piano. forte.

piano

forte.

piano.

piano.

Allegro

Forte

Da Capo.

Adm. Gm

Vivace.

Violino Solo.

alce inju.

piano

pian. *forte*

cresc.

Handwritten musical notation on a single staff, featuring a treble clef, a key signature of two sharps (F# and C#), and a common time signature (C). The music begins with a dynamic marking of *piano*. The notation includes a series of eighth and sixteenth notes, followed by a sequence of quarter notes.

Handwritten musical notation on a single staff, continuing the piece with a treble clef, two sharps key signature, and common time. The notation consists of a series of eighth and sixteenth notes.

Handwritten musical notation on a single staff, continuing the piece with a treble clef, two sharps key signature, and common time. The notation consists of a series of eighth and sixteenth notes.

Handwritten musical notation on a single staff, concluding the piece with a treble clef, two sharps key signature, and common time. The notation includes a series of eighth and sixteenth notes, followed by a double bar line and the instruction *Da Capo*.

Five empty musical staves.

Five empty musical staves.

Five empty musical staves.

Five empty musical staves.

Adm. Em

Vivace.

Alto Viola

alve Virgo.

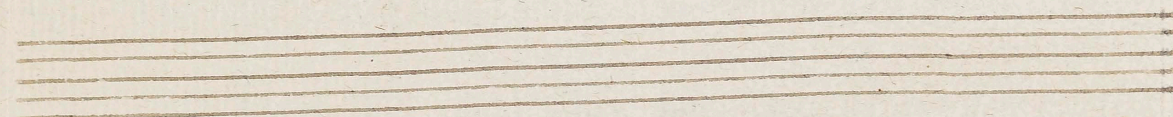
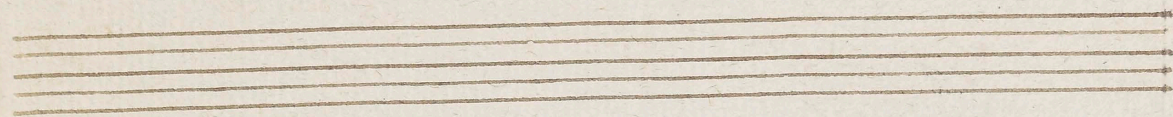
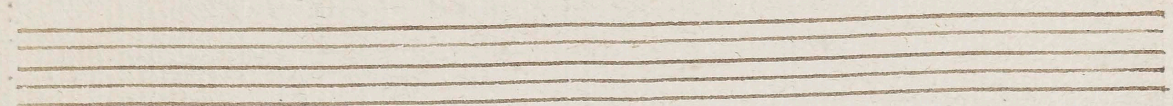
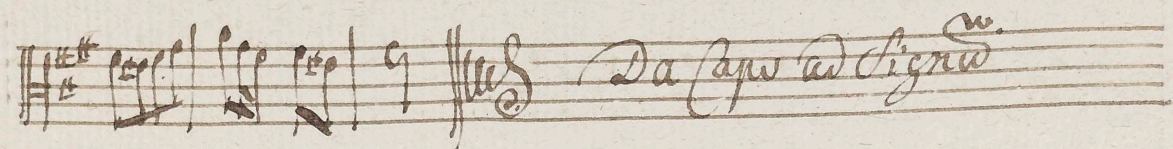
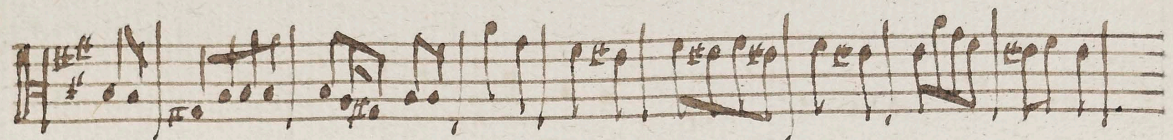
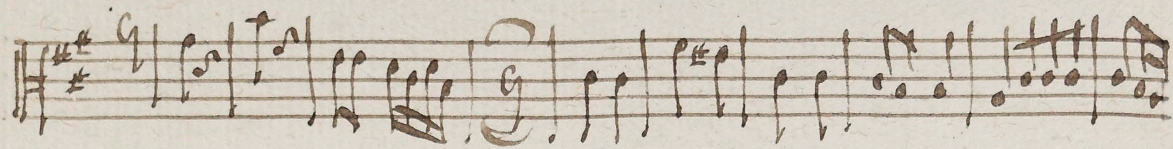
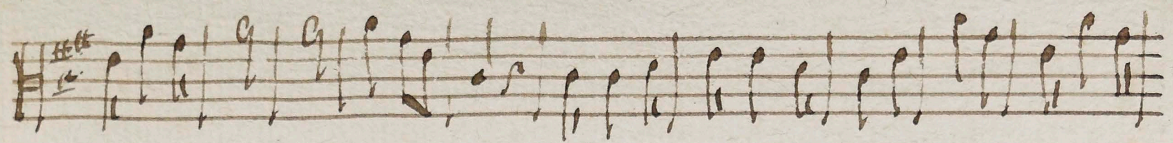
piano *forte*

pian.

forte

p

Ante



Adm. Gm

Organo.

Handwritten musical notation on a single staff. The key signature is two sharps (F# and C#). The time signature is 2/4. The notation includes various note values, rests, and dynamic markings such as *allegro* and *rit.* There are also some numerical markings above the staff, possibly indicating fingerings or ornaments.

Handwritten musical notation on a single staff, continuing the piece. It features similar notation to the first staff, with notes, rests, and dynamic markings.

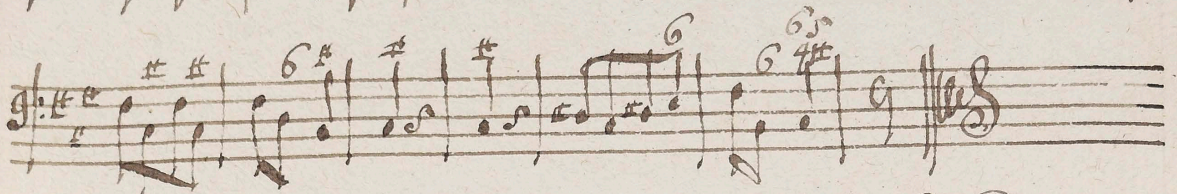
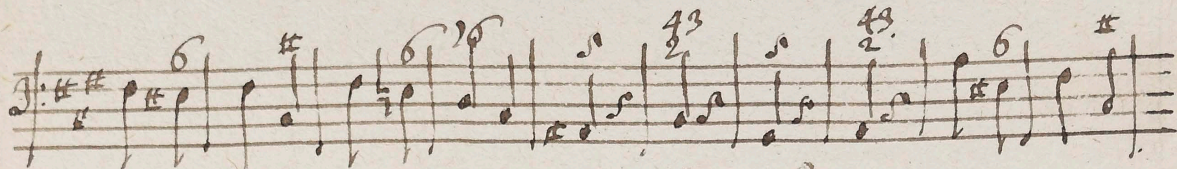
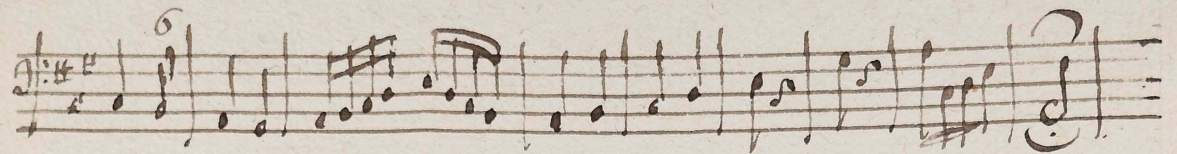
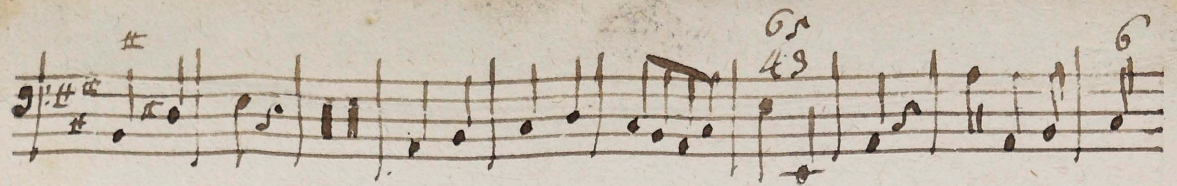
Handwritten musical notation on a single staff. This section includes a 3/4 time signature and various rhythmic patterns.

Handwritten musical notation on a single staff. It continues the melodic and harmonic development of the piece.

Handwritten musical notation on a single staff. This section shows more complex rhythmic figures and dynamic changes.

Handwritten musical notation on a single staff. The notation includes some slurs and phrasing marks.

Handwritten musical notation on a single staff, concluding the piece on this page. It features a final cadence and some decorative flourishes.



Da Capo ad Signum.



