



Motetto  
De S. Virginibus  
Veni Sponsa Christi  
Canto <sup>a</sup> Alto et Basso  
Con 2. Violini  
et  
Organo.

Ecclesie Publice Rauricensis: Sacrum  
Raptori Sanilegium.

Organo

Handwritten musical score for organ, consisting of ten staves. The notation includes treble and bass clefs, a key signature of one sharp (F#), and a time signature of 6/8. The music is written in a style characteristic of Baroque or early Classical organ music, featuring intricate melodic lines and complex figured bass. The figures are written above the notes, often with a '6' as the base figure, and include various accidentals and rhythmic markings. The word 'Organo' is written at the top center. The first staff begins with a treble clef and a key signature of one sharp. The second staff begins with a bass clef and the text 'eni sponda' written above it. The notation is dense, with many sixteenth and thirty-second notes, and frequent use of accidentals and slurs.

Canto.

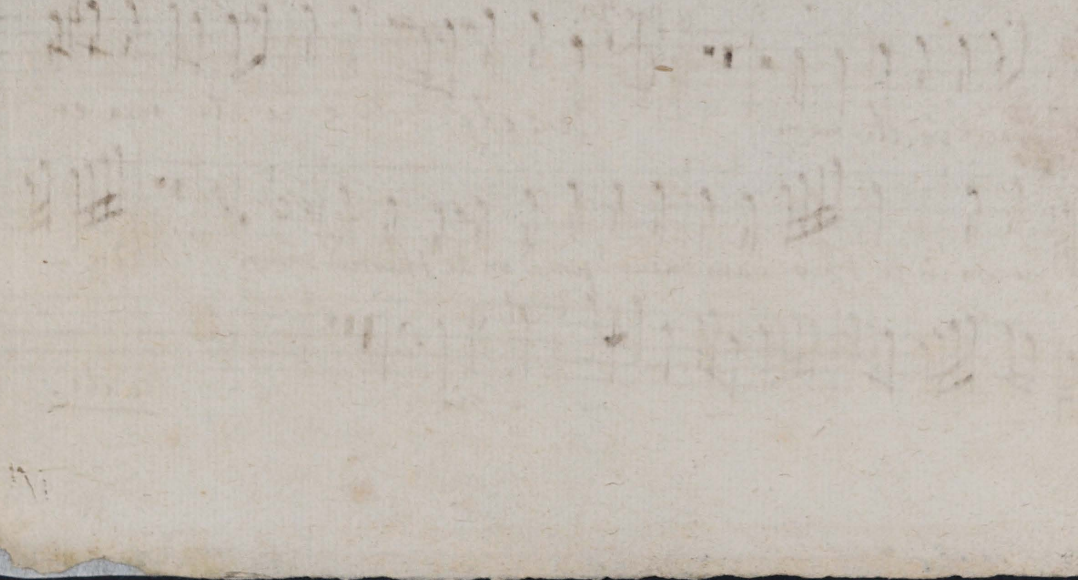
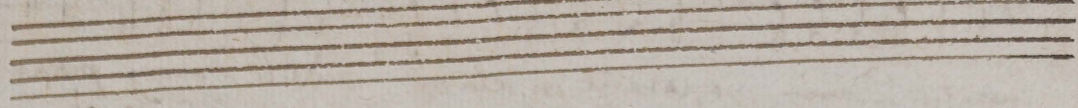
eni Aeni Sponsa Christi Aeni Aeni Aeni ac  
 ni sponsa Christi Aeni Aeni Quam tibi Domine preparavit prepara  
 vit in aeternum in aeternum. Aeni Sponsa Regis Aeni ac  
 cipe Coronam quam tibi Domine preparavit in aeternum  
 Quam tibi Domine preparavit in aeternum quam tibi Domine prepa  
 ravit in aeternum Aeni ele cta e le cta mea et  
 ponam in te thronum meum ponam in te thronum meum Arc -  
 ni ante.

ce - - - - - ni ce - - -

ni qui con cupirit Lex Spe ciam Tuam spe -

ceni Tuam ce - - - - - ni ce ni ce -

ni ce ni ceni ce ni ceni.



## Alto.

2

eni sponsa. Ac ci pe cor - nam Ac ci pe aui  
 pe co - nam Ac ci pe co - ronom ac - ci pe  
 preparavit in aeternum in aeternum Ac ci pe co -  
 - nam quam tibi Dominus preparavit in aeternum quem  
 tibi Dominus preparavit in aeternum. quam tibi Dominus prepara  
 vit in aeternum. *preto* Quia cum eu pirit spes pe uim Tu  
 nampe uim Quam de -  
 - ni de - - ni aeni e le ctac lecta mea et

ponam in te thronum meum Ae - - - ni ponam

in te thronum meum Ae - - -

- - - ni Ae - - - ni Ae

- - - ni Ae ni Ae ni Ae ni Ae - - - ni

Amen

*Solo.* Basso.

eni eni Spessa Cristi

eni eni Spessa Cristi de cipe curam

quam Fili Domini quod Fili Domini

nam prope ra in eter num

quod Fili Domini prope ra

ait in eter num. *festo.* Coneu puit

cum De ni

Eius conu puit cum De

ni ante

de - ni de

ni deni deni de ni deni de

ni deni



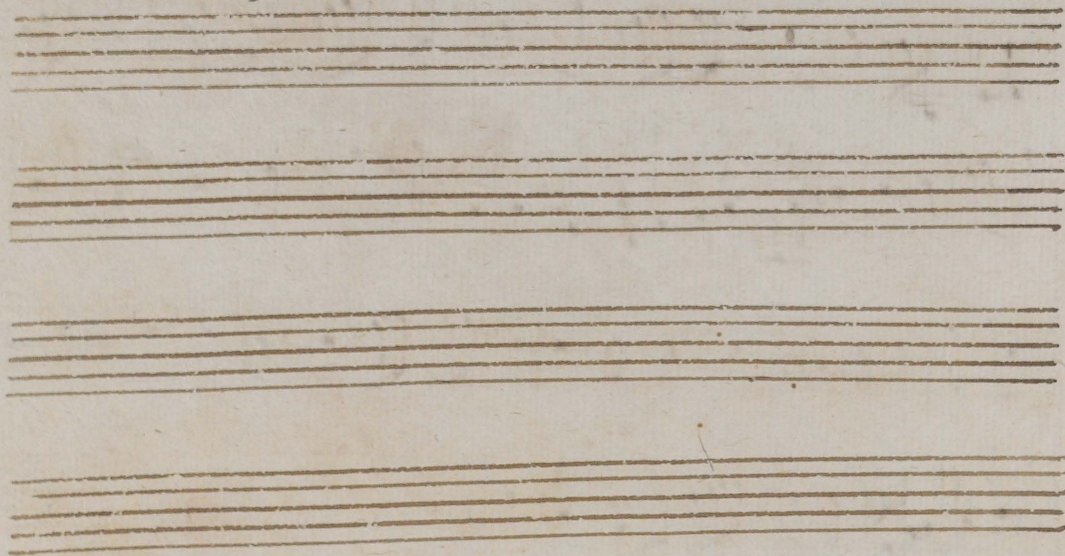
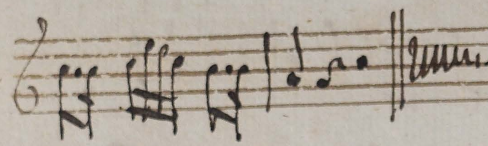

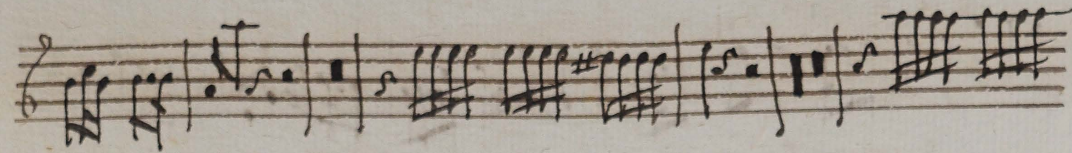
Quilens me.

oni spensa xpi.

ante.

This is a handwritten musical score on aged paper. It consists of eight staves of music. The first staff begins with a treble clef, a key signature of one sharp (F#), and a 3/8 time signature. The lyrics 'oni spensa xpi.' are written below the first staff. The notation includes various rhythmic values such as eighth and sixteenth notes, rests, and accidentals. The final staff concludes with the word 'ante.' written below it.

*presto.*



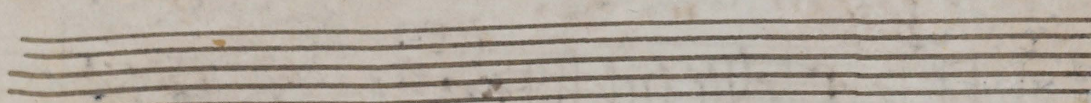
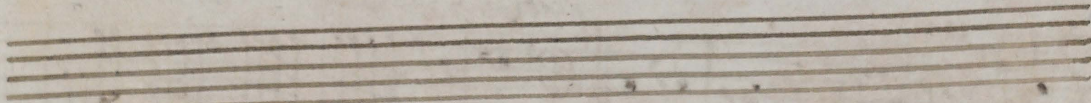
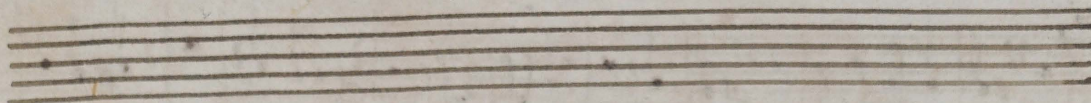
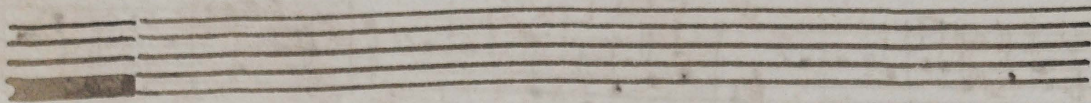
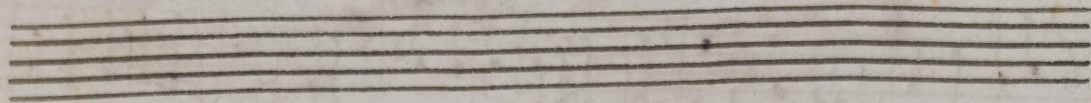
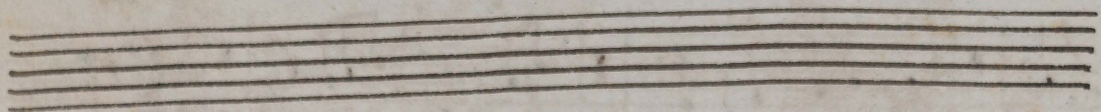
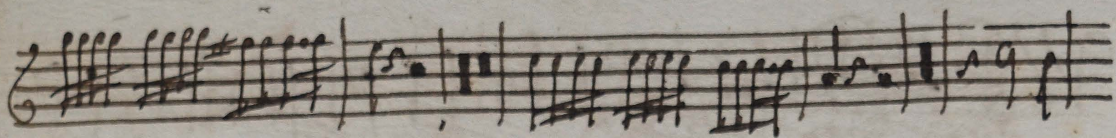
Violino 2do.

5

*enigma Christi*

*mezzo.*

*Acute.*



presto. 6 # - 6 6 # 6 6 6 26 6 6 # 6 6 6 #

