

Canto.

B *cre-di camus Pa-trem be-ne-di camus Fi-li*

*um be-ne-di camus Fi-li-um cum Sa-ncto et Sa-ncto* *cum*

*Sa-ncto Sa-ncto Spi-ri-tu be-ne-di ca-* *- - - mus Pa-*

*tr-em be-ne-di camus Fi-li-um Lau-demus Lau-demus et*

*Super ex-alte-* *- - - mus et Super ex-al-*

*temus et Super ex-alte-* *- - - mus in Saecula in Saecula*

*la Quis Pa-ter talis Fi-li-us Pa-tris talis Spi-ri-tus*

*San-ctus* *Solus* *Ae-ternus Pa-ter Ae-ternus Fi-li-us*





eternus Spiritus Sanctus Spiritus Sanctus San

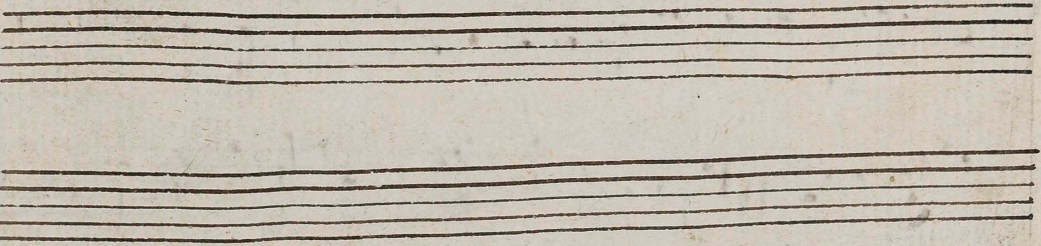
ctus Et tamen non tres aeterni Sed unus aeternus

Et tamen non tres aeterni Sed unus aeternus Sed u

nus aeternus Sed unus aeternus Et tamen

non tres aeterni Aeterni Sed Unus Aeternus Sed Unus a

eternus.





Vio lino Solo.

*enedi cam us*

This page contains a handwritten musical score for a Violino Solo. The score is written on ten staves. The first staff begins with a large 'B' time signature and a treble clef. Below the first staff, the text 'enedi cam us' is written in a cursive hand. The music consists of a vocal line on the first staff and instrumental accompaniment on the remaining nine staves. The key signature has one sharp (F#), and the time signature is 6/8. The notation includes various rhythmic values, including eighth and sixteenth notes, and rests. The paper shows signs of age, with some staining and wear.



