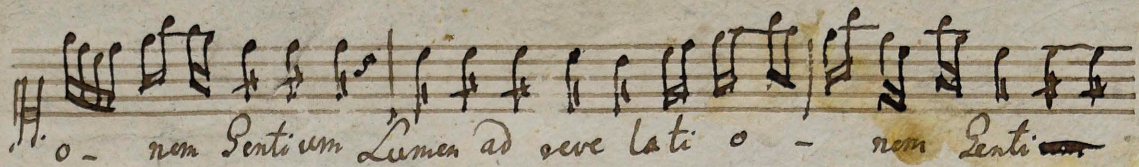


Canto Solo

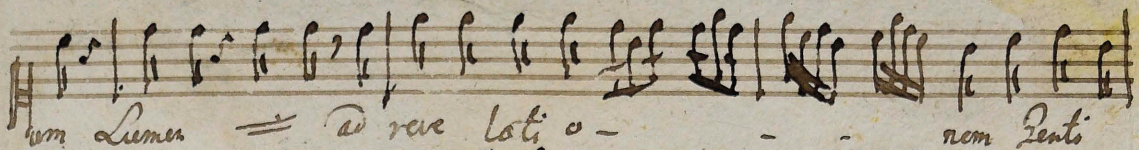
Handwritten musical score for Canto Solo, featuring a vocal line and a multi-measure rest. The lyrics are in Latin and describe the birth of Jesus.

odie Beata Virgo Maria puerum Jesum presen-
ta - - - - - rit presen - - - - - rit presen
- - - - - rit presen - - - - - rit in
templo et circumple
- - - - - tus Spiritu San-
- - - - - cto. acce -
- - - - - pit eum in ulnas suas et bene- dixit Deum di-
- - - - - cens et bene- dixit Deum dicens ^{alleg} Lumen ad reve- lanti,

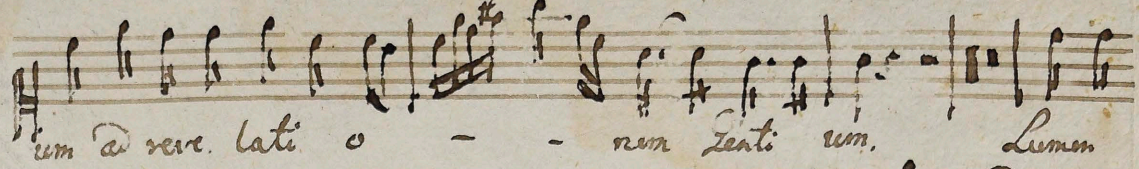




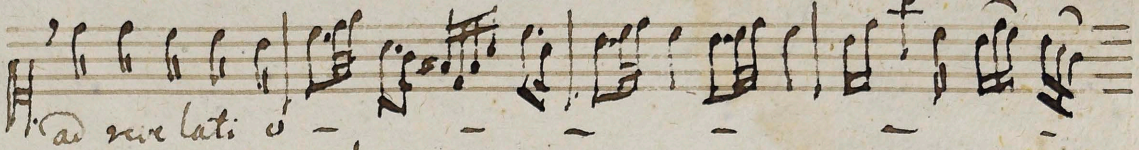
o - nem Sanctum Lumen ad reve lati o - nem Sanctum



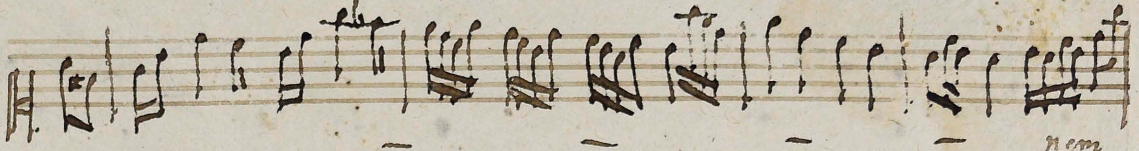
um Lumen = ad reve lati o - nem Sancti



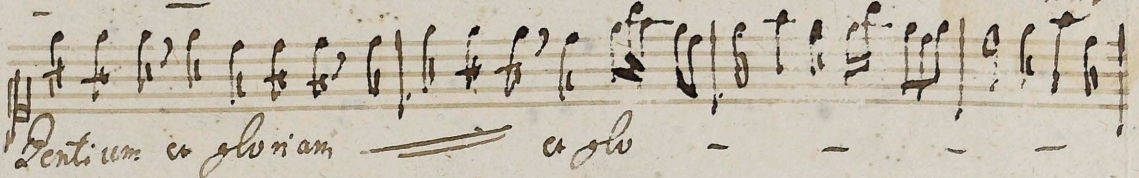
um ad reve. lati o - nem Sancti um, Lumen



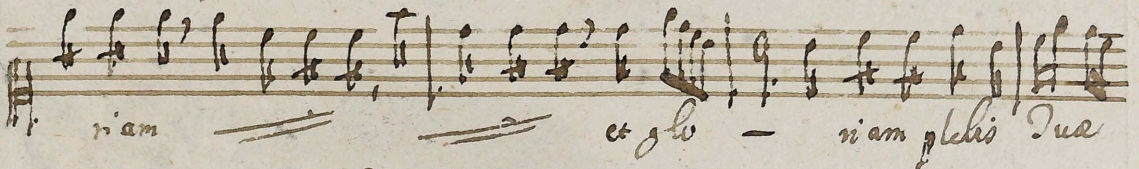
ad reve lati o



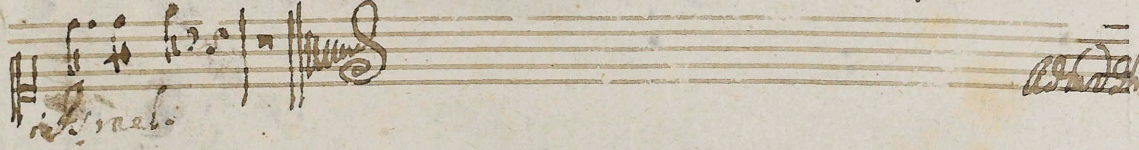
Sanctum et gloriam



et glo - nam



et glo - nam plenam

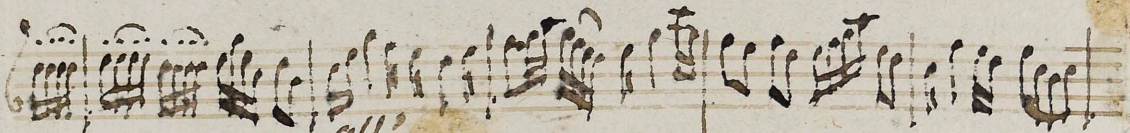
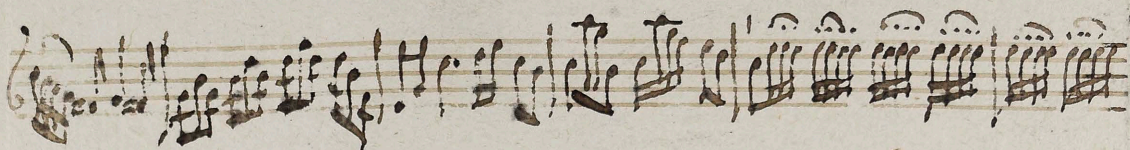
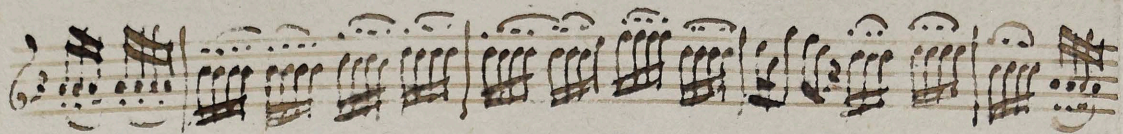
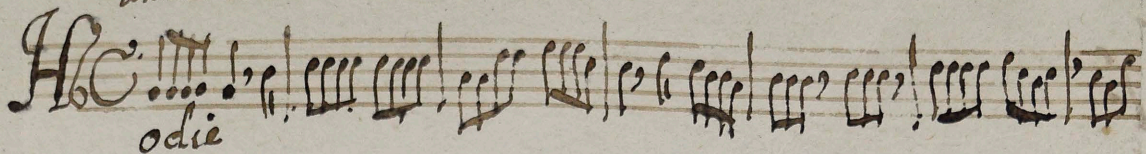


plenam

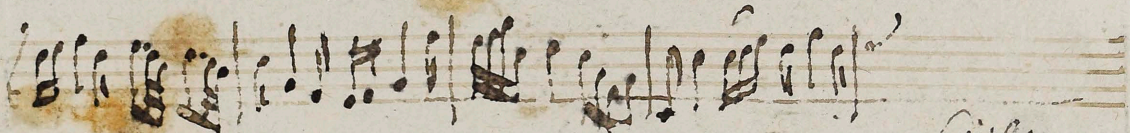
Handwritten signature or initials in the bottom right corner.

Andante.

Violino Solo.



Allegro.



Crispina

Handwritten musical notation on a five-line staff, featuring a treble clef and a key signature of one sharp (F#). The notation includes various rhythmic values and rests.

Handwritten musical notation on a five-line staff, continuing the piece with a treble clef and a key signature of one sharp.

Handwritten musical notation on a five-line staff, continuing the piece with a treble clef and a key signature of one sharp.

Handwritten musical notation on a five-line staff, continuing the piece with a treble clef and a key signature of one sharp.

Handwritten musical notation on a five-line staff, continuing the piece with a treble clef and a key signature of one sharp.

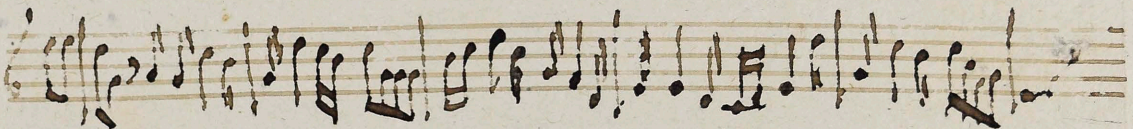
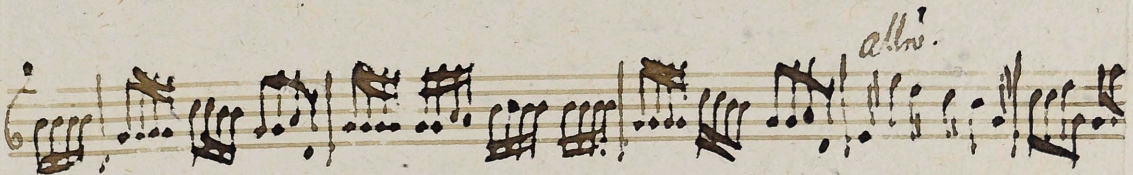
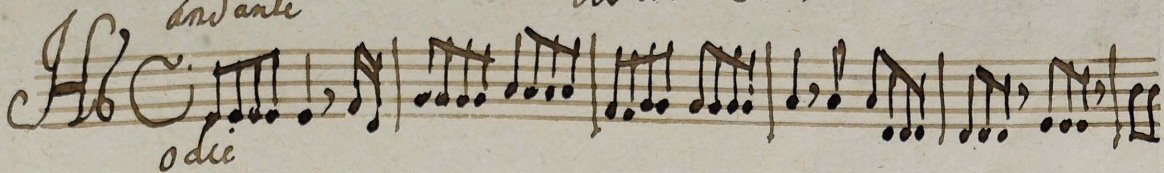
Handwritten musical notation on a five-line staff, continuing the piece with a treble clef and a key signature of one sharp.

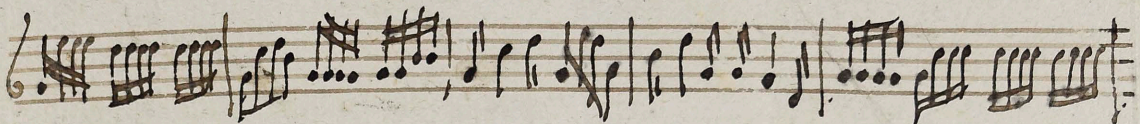
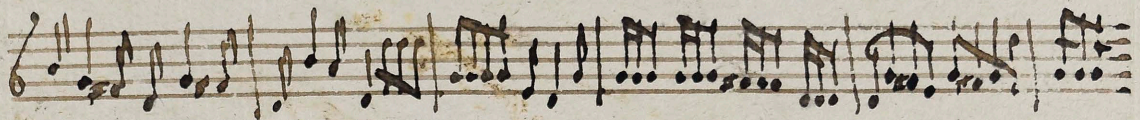
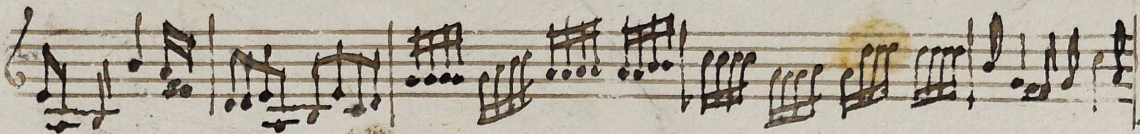
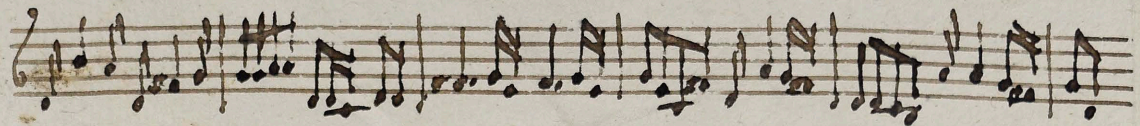
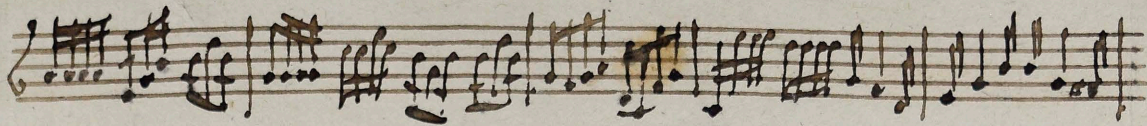
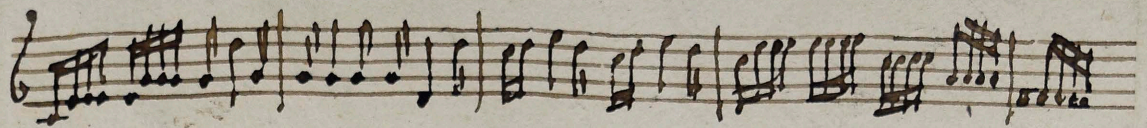
Handwritten musical notation on a five-line staff, continuing the piece with a treble clef and a key signature of one sharp.

Handwritten musical notation on a five-line staff, concluding the piece with a treble clef, a key signature of one sharp, and a double bar line. The notation includes a final cadence.

Violino 2do.

Andante





Handwritten text or signature at the bottom right of the page, possibly reading "L. M. S. 1782".

Basso.

Andante

odie. Lumen ad vere latius - nom Gentium, Lumen

ad vere latius - nom Gentium Lumen = = ad revelati

onem ad vere latius onem Gentium ad vere latius - nom

Gentium. Lumen ad vere latius onem Gentium et glo

riam et glo - - - - - riam

et gloriam - - - - - et glo - - - - - riam

et gloriam - - - - - et glo - - - - - riam Plebis Suae Israel

Adagio

